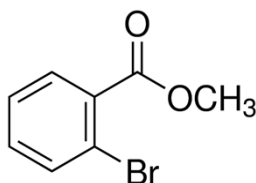


MATERIAL SAFETY DATA SHEET (MSDS)

SECTION 1: Identification of the substance/mixture and of the company/undertaking

1.1. Product identifier

Product form : Substance
:
CAS-No. : 610-94-6
Product code : 00209
Chemical structure :



1.2. Relevant identified uses of the substance or mixture and uses advised against

1.2.1. Relevant identified uses

Industrial/Professional use spec : Industrial
For professional use only
Use of the substance/mixture : Laboratory chemicals

1.2.2. Uses advised against

No additional information available

1.3. Details of the supplier of the safety data sheet

LOBA CHEMIE PVT.LTD.
107 Wode House Road, Jehangir Villa, Colaba
400005 Mumbai - INDIA
T +91 22 6663 6663 - F +91 22 6663 6699
info@lobachemie.com - www.lobachemie.com

1.4. Emergency telephone number

Emergency number : + 91 22 6663 6663 (9:00am - 6:00 pm)

SECTION 2: Hazards identification

2.1. Classification of the substance or mixture

Classification according to Regulation (EC) No. 1272/2008 [CLP]

Not classified

Classification according to Directive 67/548/EEC [DSD] or 1999/45/EC [DPD]

Not classified

METHYL 2-BROMOBENZOATE Extra Pure

Safety Data Sheet

Adverse physicochemical, human health and environmental effects

No additional information available

2.2. Label elements

Labelling according to Regulation (EC) No. 1272/2008 [CLP]

No labelling applicable

2.3. Other hazards

No additional information available

SECTION 3: Composition/information on ingredients

3.1. Substances

| Name | Product identifier | % |
|-----------------------------------|--------------------|-----|
| METHYL 2-BROMOBENZOATE Extra Pure | (CAS-No.) 610-94-6 | 100 |

Full text of R- and H-statements: see section 16

3.2. Mixtures

Not applicable

SECTION 4: First aid measures

4.1. Description of first aid measures

- First-aid measures after inhalation : Remove person to fresh air and keep comfortable for breathing. Give oxygen or artificial respiration if necessary. If you feel unwell, seek medical advice.
- First-aid measures after skin contact : Gently wash with plenty of soap and water. If skin irritation occurs: Get medical advice/attention.
- First-aid measures after eye contact : Remove contact lenses, if present and easy to do. Continue rinsing. Rinse cautiously with water for several minutes. If eye irritation persists: Get medical advice/attention.
- First-aid measures after ingestion : Rinse mouth out with water. If you feel unwell, seek medical advice.

4.2. Most important symptoms and effects, both acute and delayed

No additional information available

4.3. Indication of any immediate medical attention and special treatment needed

Treat symptomatically.

SECTION 5: Firefighting measures

5.1. Extinguishing media

- Suitable extinguishing media : dry chemical powder, alcohol-resistant foam, carbon dioxide (CO₂).
- Unsuitable extinguishing media : Do not use extinguishing media containing water.

5.2. Special hazards arising from the substance or mixture

No additional information available

METHYL 2-BROMOBENZOATE Extra Pure

Safety Data Sheet

5.3. Advice for firefighters

Protection during firefighting : Do not attempt to take action without suitable protective equipment.

SECTION 6: Accidental release measures

6.1. Personal precautions, protective equipment and emergency procedures

6.1.1. For non-emergency personnel

Emergency procedures : Avoid contact with skin and eyes.

6.1.2. For emergency responders

Protective equipment : Use personal protective equipment as required.

Emergency procedures : Stop release.

6.2. Environmental precautions

Avoid release to the environment.

6.3. Methods and material for containment and cleaning up

Methods for cleaning up : Clear up rapidly by scoop or vacuum. Clean contaminated surfaces with an excess of water.

6.4. Reference to other sections

No additional information available

SECTION 7: Handling and storage

7.1. Precautions for safe handling

Precautions for safe handling : Do not get in eyes, on skin, or on clothing.

Hygiene measures : Wash hands and other exposed areas with mild soap and water before eating, drinking or smoking and when leaving work.

7.2. Conditions for safe storage, including any incompatibilities

Storage conditions : Store in a well-ventilated place. Keep cool. Store in original container.

7.3. Specific end use(s)

No additional information available

SECTION 8: Exposure controls/personal protection

8.1. Control parameters

No additional information available

8.2. Exposure controls

Hand protection : Protective gloves

Eye protection : Chemical goggles or safety glasses

Skin and body protection : Chemical resistant safety shoes

Respiratory protection : Wear respiratory protection.

SECTION 9: Physical and chemical properties

9.1. Information on basic physical and chemical properties

Physical state : Liquid

METHYL 2-BROMOBENZOATE Extra Pure

Safety Data Sheet

| | |
|--|---------------------|
| Molecular mass | : 215.04 g/mol |
| Colour | : Clear Colorles. |
| Odour | : No data available |
| Odour threshold | : No data available |
| pH | : No data available |
| Relative evaporation rate (butylacetate=1) | : No data available |
| Melting point | : No data available |
| Freezing point | : No data available |
| Boiling point | : No data available |
| Flash point | : > 113 °C |
| Auto-ignition temperature | : No data available |
| Decomposition temperature | : No data available |
| Flammability (solid, gas) | : No data available |
| Vapour pressure | : No data available |
| Relative vapour density at 20 °C | : No data available |
| Relative density | : No data available |
| Solubility | : No data available |
| Log Pow | : No data available |
| Viscosity, kinematic | : No data available |
| Viscosity, dynamic | : No data available |
| Explosive properties | : No data available |
| Oxidising properties | : No data available |
| Explosive limits | : No data available |

9.2. Other information

No additional information available

SECTION 10: Stability and reactivity

10.1. Reactivity

No additional information available

10.2. Chemical stability

Stable under normal conditions.

10.3. Possibility of hazardous reactions

No additional information available

10.4. Conditions to avoid

Air contact. Direct sunlight. Overheating.

10.5. Incompatible materials

No additional information available

METHYL 2-BROMOBENZOATE Extra Pure

Safety Data Sheet

10.6. Hazardous decomposition products

No additional information available

SECTION 11: Toxicological information

11.1. Information on toxicological effects

Acute toxicity : Not classified

Skin corrosion/irritation : Not classified

Serious eye damage/irritation : Not classified

Respiratory or skin sensitisation : Not classified

Germ cell mutagenicity : Not classified

Carcinogenicity : Not classified

Reproductive toxicity : Not classified

STOT-single exposure : Not classified

STOT-repeated exposure : Not classified

Aspiration hazard : Not classified

SECTION 12: Ecological information

12.1. Toxicity

No additional information available

12.2. Persistence and degradability

No additional information available

12.3. Bioaccumulative potential

No additional information available

12.4. Mobility in soil

No additional information available

12.5. Results of PBT and vPvB assessment

No additional information available

12.6. Other adverse effects

No additional information available

METHYL 2-BROMOBENZOATE Extra Pure

Safety Data Sheet

SECTION 13: Disposal considerations

13.1. Waste treatment methods

No additional information available

SECTION 14: Transport information

In accordance with ADR / RID / IMDG / IATA / ADN

14.1. UN number

| | |
|---------------|------------------|
| UN-No. (ADR) | : Not applicable |
| UN-No. (IMDG) | : Not applicable |
| UN-No. (IATA) | : Not applicable |
| UN-No. (ADN) | : Not applicable |
| UN-No. (RID) | : Not applicable |

14.2. UN proper shipping name

| | |
|-----------------------------|------------------|
| Proper Shipping Name (ADR) | : Not applicable |
| Proper Shipping Name (IMDG) | : Not applicable |
| Proper Shipping Name (IATA) | : Not applicable |
| Proper Shipping Name (ADN) | : Not applicable |
| Proper Shipping Name (RID) | : Not applicable |

14.3. Transport hazard class(es)

ADR

| | |
|----------------------------------|------------------|
| Transport hazard class(es) (ADR) | : Not applicable |
|----------------------------------|------------------|

IMDG

| | |
|-----------------------------------|------------------|
| Transport hazard class(es) (IMDG) | : Not applicable |
|-----------------------------------|------------------|

IATA

| | |
|-----------------------------------|------------------|
| Transport hazard class(es) (IATA) | : Not applicable |
|-----------------------------------|------------------|

ADN

| | |
|----------------------------------|------------------|
| Transport hazard class(es) (ADN) | : Not applicable |
|----------------------------------|------------------|

RID

| | |
|----------------------------------|------------------|
| Transport hazard class(es) (RID) | : Not applicable |
|----------------------------------|------------------|

14.4. Packing group

| | |
|----------------------|------------------|
| Packing group (ADR) | : Not applicable |
| Packing group (IMDG) | : Not applicable |
| Packing group (IATA) | : Not applicable |
| Packing group (ADN) | : Not applicable |
| Packing group (RID) | : Not applicable |

14.5. Environmental hazards

| | |
|-------------------------------|--|
| Dangerous for the environment | : No |
| Marine pollutant | : No |
| Other information | : No supplementary information available |

METHYL 2-BROMOBENZOATE Extra Pure

Safety Data Sheet

14.6. Special precautions for user

- Overland transport

Not applicable

- Transport by sea

Not applicable

- Air transport

Not applicable

- Inland waterway transport

Not applicable

- Rail transport

Not applicable

14.7. Transport in bulk according to Annex II of MARPOL 73/78 and the IBC Code

Not applicable

SECTION 15: Regulatory information

15.1. Safety, health and environmental regulations/legislation specific for the substance or mixture

15.1.1. EU-Regulations

No REACH Annex XVII restrictions

METHYL 2-BROMOBENZOATE Extra Pure is not on the REACH Candidate List

METHYL 2-BROMOBENZOATE Extra Pure is not on the REACH Annex XIV List

15.1.2. National regulations

Germany

12th Ordinance Implementing the Federal Immission Control Act - 12.BImSchV : Is not subject of the 12. BImSchV (Hazardous Incident Ordinance)

Netherlands

SZW-lijst van kankerverwekkende stoffen : The substance is not listed

SZW-lijst van mutagene stoffen : The substance is not listed

NIET-limitatieve lijst van voor de voortplanting giftige stoffen – Borstvoeding : The substance is not listed

NIET-limitatieve lijst van voor de voortplanting giftige stoffen – Vruchtbaarheid : The substance is not listed

NIET-limitatieve lijst van voor de voortplanting giftige stoffen – Ontwikkeling : The substance is not listed

15.2. Chemical safety assessment

No additional information available

METHYL 2-BROMOBENZOATE Extra Pure

Safety Data Sheet

SECTION 16: Other information

This information is based on our current knowledge and is intended to describe the product for the purposes of health, safety and environmental requirements only. It should not therefore be construed as guaranteeing any specific property of the product