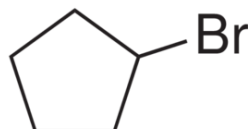


SECTION 1: Identification of the substance/mixture and of the company/undertaking

1.1. Product identifier

Product form : Substance
Trade name : CYCLOPENTYL BROMIDE EXTRA PURE
EC-No. : 205-294-6
CAS-No. : 137-43-9
Product code : 3138B
Formula : C₅H₉Br
Chemical structure :



Synonyms : Bromocyclopentane

1.2. Relevant identified uses of the substance or mixture and uses advised against

1.2.1. Relevant identified uses

Use of the substance/mixture : Laboratory chemicals
Manufacture of substances
Solvents

1.2.2. Uses advised against

No additional information available

1.3. Details of the supplier of the safety data sheet

LOBA CHEMIE PVT.LTD.
107 Wode House Road, Jehangir Villa, Colaba
400005 Mumbai
INDIA
T +91 22 6663 6663 - F +91 22 6663 6699
info@lobachemie.com - www.lobachemie.com

1.4. Emergency telephone number

Emergency number : + 91 22 6663 6663 (9:00am - 6:00 pm)

SECTION 2: Hazards identification

2.1. Classification of the substance or mixture

Classification according to Regulation (EC) No. 1272/2008 [CLP]

Flammable liquids, Category 3 H226
Full text of H- and EUH-statements: see section 16

Adverse physicochemical, human health and environmental effects

Flammable liquid and vapour.

2.2. Label elements

Labelling according to Regulation (EC) No. 1272/2008 [CLP]

Hazard pictograms (CLP) :



GHS02

Signal word (CLP) : Warning

CYCLOPENTYL BROMIDE EXTRA PURE

Safety Data Sheet

according to the REACH Regulation (EC) 1907/2006 amended by Regulation (EU) 2020/878

Hazard statements (CLP) : H226 - Flammable liquid and vapour.
Precautionary statements (CLP) : P210 - Keep away from heat, hot surfaces, sparks, open flames and other ignition sources.
No smoking.

2.3. Other hazards

No additional information available

SECTION 3: Composition/information on ingredients

3.1. Substances

Substance type : Mono-constituent

Name	Product identifier	%
CYCLOPENTYL BROMIDE	CAS-No.: 137-43-9 EC-No.: 205-294-6	100

3.2. Mixtures

Not applicable

SECTION 4: First aid measures

4.1. Description of first aid measures

First-aid measures after inhalation : Remove person to fresh air and keep comfortable for breathing.
First-aid measures after skin contact : Rinse skin with water/shower. Take off immediately all contaminated clothing.
First-aid measures after eye contact : Rinse eyes with water as a precaution.
First-aid measures after ingestion : Call a poison center or a doctor if you feel unwell.

4.2. Most important symptoms and effects, both acute and delayed

No additional information available

4.3. Indication of any immediate medical attention and special treatment needed

Treat symptomatically.

SECTION 5: Firefighting measures

5.1. Extinguishing media

Suitable extinguishing media : Water spray. Dry powder. Foam. Carbon dioxide.

5.2. Special hazards arising from the substance or mixture

Fire hazard : Flammable liquid and vapour.
Hazardous decomposition products in case of fire : Toxic fumes may be released.

5.3. Advice for firefighters

Protection during firefighting : Do not attempt to take action without suitable protective equipment. Self-contained breathing apparatus. Complete protective clothing.

SECTION 6: Accidental release measures

6.1. Personal precautions, protective equipment and emergency procedures

6.1.1. For non-emergency personnel

Emergency procedures : Ventilate spillage area. No open flames, no sparks, and no smoking.

CYCLOPENTYL BROMIDE EXTRA PURE

Safety Data Sheet

according to the REACH Regulation (EC) 1907/2006 amended by Regulation (EU) 2020/878

6.1.2. For emergency responders

Protective equipment : Do not attempt to take action without suitable protective equipment. For further information refer to section 8: "Exposure controls/personal protection".

6.2. Environmental precautions

Avoid release to the environment.

6.3. Methods and material for containment and cleaning up

Methods for cleaning up : Take up liquid spill into absorbent material. Notify authorities if product enters sewers or public waters.

Other information : Dispose of materials or solid residues at an authorized site.

6.4. Reference to other sections

For further information refer to section 13.

SECTION 7: Handling and storage

7.1. Precautions for safe handling

Precautions for safe handling : Ensure good ventilation of the work station. Keep away from heat, hot surfaces, sparks, open flames and other ignition sources. No smoking. Ground/bond container and receiving equipment. Use only non-sparking tools. Take precautionary measures against static discharge. Flammable vapours may accumulate in the container. Use explosion-proof equipment. Wear personal protective equipment.

Hygiene measures : Do not eat, drink or smoke when using this product. Always wash hands after handling the product.

7.2. Conditions for safe storage, including any incompatibilities

Technical measures : Ground/bond container and receiving equipment.

Storage conditions : Store in a well-ventilated place. Keep cool. Keep container tightly closed.

7.3. Specific end use(s)

No additional information available

SECTION 8: Exposure controls/personal protection

8.1. Control parameters

8.1.1 National occupational exposure and biological limit values

No additional information available

8.1.2. Recommended monitoring procedures

No additional information available

8.1.3. Air contaminants formed

No additional information available

8.1.4. DNEL and PNEC

No additional information available

8.1.5. Control banding

No additional information available

8.2. Exposure controls

8.2.1. Appropriate engineering controls

Appropriate engineering controls:

Ensure good ventilation of the work station.

CYCLOPENTYL BROMIDE EXTRA PURE

Safety Data Sheet

according to the REACH Regulation (EC) 1907/2006 amended by Regulation (EU) 2020/878

8.2.2. Personal protection equipment

Personal protective equipment symbol(s):



8.2.2.1. Eye and face protection

Eye protection:

Chemical goggles or safety glasses

8.2.2.2. Skin protection

Skin and body protection:

Wear a mask

Hand protection:

Protective gloves

8.2.2.3. Respiratory protection

Respiratory protection:

Wear appropriate mask

8.2.2.4. Thermal hazards

No additional information available

8.2.3. Environmental exposure controls

Environmental exposure controls:

Avoid release to the environment.

SECTION 9: Physical and chemical properties

9.1. Information on basic physical and chemical properties

Physical state	: Liquid
Colour	: Colourless to Light yellow. Light brown.
Appearance	: Clear liquid.
Molecular mass	: 149,03 g/mol
Odour	: Odourless.
Odour threshold	: Not available
Melting point	: Not applicable
Freezing point	: Not available
Boiling point	: 137 – 139 °C
Flammability	: Flammable liquid and vapour.
Lower explosion limit	: Not available
Upper explosion limit	: Not available
Flash point	: 42 °C
Auto-ignition temperature	: Not available
Decomposition temperature	: Not available
pH	: Not available
Viscosity, kinematic	: Not available
Solubility	: Water: Immiscible
Partition coefficient n-octanol/water (Log Kow)	: Not available
Vapour pressure	: Not available
Vapour pressure at 50 °C	: Not available
Density	: 1,473 g/cm ³
Relative density	: Not available
Relative vapour density at 20 °C	: 5,1 (Air = 1)
Particle characteristics	: Not applicable

CYCLOPENTYL BROMIDE EXTRA PURE

Safety Data Sheet

according to the REACH Regulation (EC) 1907/2006 amended by Regulation (EU) 2020/878

9.2. Other information

9.2.1. Information with regard to physical hazard classes

No additional information available

9.2.2. Other safety characteristics

Refractive index : 1,4881 – 1,4901 (20°C, 589 nm)

SECTION 10: Stability and reactivity

10.1. Reactivity

Flammable liquid and vapour.

10.2. Chemical stability

Stable under normal conditions.

10.3. Possibility of hazardous reactions

No dangerous reactions known under normal conditions of use.

10.4. Conditions to avoid

Avoid contact with hot surfaces. Heat. No flames, no sparks. Eliminate all sources of ignition.

10.5. Incompatible materials

No additional information available

10.6. Hazardous decomposition products

Under normal conditions of storage and use, hazardous decomposition products should not be produced.

SECTION 11: Toxicological information

11.1. Information on hazard classes as defined in Regulation (EC) No 1272/2008

Acute toxicity (oral)	: Not classified
Acute toxicity (dermal)	: Not classified
Acute toxicity (inhalation)	: Not classified
Skin corrosion/irritation	: Not classified
Serious eye damage/irritation	: Not classified
Respiratory or skin sensitisation	: Not classified
Germ cell mutagenicity	: Not classified
Carcinogenicity	: Not classified
Reproductive toxicity	: Not classified
STOT-single exposure	: Not classified
STOT-repeated exposure	: Not classified
Aspiration hazard	: Not classified

11.2. Information on other hazards

No additional information available

SECTION 12: Ecological information

12.1. Toxicity

Ecology - general	: The product is not considered harmful to aquatic organisms nor to cause long-term adverse effects in the environment.
Hazardous to the aquatic environment, short-term (acute)	: Not classified

CYCLOPENTYL BROMIDE EXTRA PURE

Safety Data Sheet

according to the REACH Regulation (EC) 1907/2006 amended by Regulation (EU) 2020/878

Hazardous to the aquatic environment, long-term (chronic) : Not classified

12.2. Persistence and degradability

No additional information available

12.3. Bioaccumulative potential

No additional information available

12.4. Mobility in soil

No additional information available

12.5. Results of PBT and vPvB assessment

No additional information available

12.6. Endocrine disrupting properties

No additional information available

12.7. Other adverse effects

No additional information available

SECTION 13: Disposal considerations

13.1. Waste treatment methods

Waste treatment methods : Dispose of contents/container in accordance with licensed collector's sorting instructions.
Additional information : Flammable vapours may accumulate in the container.

SECTION 14: Transport information

In accordance with ADR / IMDG / IATA / ADN / RID

14.1. UN number or ID number

UN-No. (ADR) : UN 1993
UN-No. (IMDG) : UN 1993
UN-No. (IATA) : UN 1993
UN-No. (ADN) : UN 1993
UN-No. (RID) : UN 1993

14.2. UN proper shipping name

Proper Shipping Name (ADR) : FLAMMABLE LIQUID, N.O.S.
Proper Shipping Name (IMDG) : FLAMMABLE LIQUID, N.O.S.
Proper Shipping Name (IATA) : Flammable liquid, n.o.s.
Proper Shipping Name (ADN) : FLAMMABLE LIQUID, N.O.S.
Proper Shipping Name (RID) : FLAMMABLE LIQUID, N.O.S.
Transport document description (ADR) : UN 1993 FLAMMABLE LIQUID, N.O.S. (CYCLOPENTYL BROMIDE), 3, III, (D/E)
Transport document description (IMDG) : UN 1993 FLAMMABLE LIQUID, N.O.S., 3, III
Transport document description (IATA) : UN 1993 Flammable liquid, n.o.s. (CYCLOPENTYL BROMIDE), 3, III
Transport document description (ADN) : UN 1993 FLAMMABLE LIQUID, N.O.S., 3, III
Transport document description (RID) : UN 1993 FLAMMABLE LIQUID, N.O.S., 3, III

14.3. Transport hazard class(es)

ADR

Transport hazard class(es) (ADR) : 3
Danger labels (ADR) : 3

CYCLOPENTYL BROMIDE EXTRA PURE

Safety Data Sheet

according to the REACH Regulation (EC) 1907/2006 amended by Regulation (EU) 2020/878



IMDG

Transport hazard class(es) (IMDG) : 3
Danger labels (IMDG) : 3



IATA

Transport hazard class(es) (IATA) : 3
Danger labels (IATA) : 3



ADN

Transport hazard class(es) (ADN) : 3
Danger labels (ADN) : 3



RID

Transport hazard class(es) (RID) : 3
Danger labels (RID) : 3



14.4. Packing group

Packing group (ADR) : III
Packing group (IMDG) : III
Packing group (IATA) : III
Packing group (ADN) : III
Packing group (RID) : III

14.5. Environmental hazards

Dangerous for the environment : No
Marine pollutant : No
Other information : No supplementary information available

14.6. Special precautions for user

Overland transport

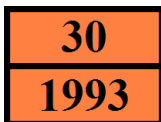
Classification code (ADR) : F1
Special provisions (ADR) : 274, 601
Limited quantities (ADR) : 5I
Excepted quantities (ADR) : E1
Packing instructions (ADR) : P001, IBC03, LP01, R001
Mixed packing provisions (ADR) : MP19
Portable tank and bulk container instructions (ADR) : T4

CYCLOPENTYL BROMIDE EXTRA PURE

Safety Data Sheet

according to the REACH Regulation (EC) 1907/2006 amended by Regulation (EU) 2020/878

Portable tank and bulk container special provisions (ADR) : TP1, TP29
Tank code (ADR) : LGBF
Vehicle for tank carriage : FL
Transport category (ADR) : 3
Special provisions for carriage - Packages (ADR) : V12
Special provisions for carriage - Operation (ADR) : S2
Hazard identification number (Kemler No.) : 30
Orange plates :



Tunnel restriction code (ADR) : D/E
EAC code : •3Y

Transport by sea

Special provisions (IMDG) : 223, 274, 955
Limited quantities (IMDG) : 5 L
Excepted quantities (IMDG) : E1
Packing instructions (IMDG) : LP01, P001
IBC packing instructions (IMDG) : IBC03
Tank instructions (IMDG) : T4
Tank special provisions (IMDG) : TP1, TP29
EmS-No. (Fire) : F-E
EmS-No. (Spillage) : S-E
Stowage category (IMDG) : A

Air transport

PCA Excepted quantities (IATA) : E1
PCA Limited quantities (IATA) : Y344
PCA limited quantity max net quantity (IATA) : 10L
PCA packing instructions (IATA) : 355
PCA max net quantity (IATA) : 60L
CAO packing instructions (IATA) : 366
CAO max net quantity (IATA) : 220L
Special provisions (IATA) : A3
ERG code (IATA) : 3L

Inland waterway transport

Classification code (ADN) : F1
Special provisions (ADN) : 274, 601
Limited quantities (ADN) : 5 L
Excepted quantities (ADN) : E1
Carriage permitted (ADN) : T
Equipment required (ADN) : PP, EX, A
Ventilation (ADN) : VE01
Number of blue cones/lights (ADN) : 0

Rail transport

Classification code (RID) : F1
Special provisions (RID) : 274, 601
Limited quantities (RID) : 5L
Excepted quantities (RID) : E1
Packing instructions (RID) : P001, IBC03, LP01, R001
Mixed packing provisions (RID) : MP19
Portable tank and bulk container instructions (RID) : T4
Portable tank and bulk container special provisions (RID) : TP1, TP29
Tank codes for RID tanks (RID) : LGBF
Transport category (RID) : 3
Special provisions for carriage – Packages (RID) : W12
Colis express (express parcels) (RID) : CE4

CYCLOPENTYL BROMIDE EXTRA PURE

Safety Data Sheet

according to the REACH Regulation (EC) 1907/2006 amended by Regulation (EU) 2020/878

Hazard identification number (RID) : 30

14.7. Maritime transport in bulk according to IMO instruments

Not applicable

SECTION 15: Regulatory information

15.1. Safety, health and environmental regulations/legislation specific for the substance or mixture

15.1.1. EU-Regulations

REACH Annex XVII (Restriction List)

EU restriction list (REACH Annex XVII)	
Reference code	Applicable on
3(a)	CYCLOPENTYL BROMIDE EXTRA PURE
40.	CYCLOPENTYL BROMIDE EXTRA PURE

REACH Annex XIV (Authorisation List)

CYCLOPENTYL BROMIDE EXTRA PURE is not on the REACH Annex XIV List

REACH Candidate List (SVHC)

CYCLOPENTYL BROMIDE EXTRA PURE is not on the REACH Candidate List

PIC Regulation (Prior Informed Consent)

CYCLOPENTYL BROMIDE EXTRA PURE is not subject to Regulation (EU) No 649/2012 of the European Parliament and of the Council of 4 July 2012 concerning the export and import of hazardous chemicals.

POP Regulation (Persistent Organic Pollutants)

CYCLOPENTYL BROMIDE EXTRA PURE is not subject to Regulation (EU) No 2019/1021 of the European Parliament and of the Council of 20 June 2019 on persistent organic pollutants

Ozone Regulation (1005/2009)

CYCLOPENTYL BROMIDE is not subject to REGULATION (EU) No 1005/2009 OF THE EUROPEAN PARLIAMENT AND OF THE COUNCIL of 16 September 2009 on substances that deplete the ozone layer.

Explosives Precursors Regulation (2019/1148)

Contains no substance subject to Regulation (EU) 2019/1148 of the European Parliament and of the Council of 20 June 2019 on the marketing and use of explosives precursors.

Drug Precursors Regulation (273/2004)

Contains no substance(s) listed on the Drug Precursors list (Regulation EC 273/2004 on drug precursors)

15.1.2. National regulations

Germany

Employment restrictions : Observe restrictions according Act on the Protection of Working Mothers (MuSchG).
Observe restrictions according Act on the Protection of Young People in Employment (JArbSchG).
Water hazard class (WGK) : Not classified according to Regulation Governing Systems for Handling Substances Hazardous to Waters (AwSV).
Hazardous Incident Ordinance (12. BImSchV) : Is not subject of the Hazardous Incident Ordinance (12. BImSchV)

Netherlands

SZW-lijst van kankerverwekkende stoffen : The substance is not listed
SZW-lijst van mutagene stoffen : The substance is not listed
SZW-lijst van reprotoxische stoffen – Borstvoeding : The substance is not listed
SZW-lijst van reprotoxische stoffen – Vruchtbaarheid : The substance is not listed
SZW-lijst van reprotoxische stoffen – Ontwikkeling : The substance is not listed

CYCLOPENTYL BROMIDE EXTRA PURE

Safety Data Sheet

according to the REACH Regulation (EC) 1907/2006 amended by Regulation (EU) 2020/878

Denmark

Class for fire hazard : Class II-1
Store unit : 5 liter
Classification remarks : R10 <H226>; Emergency management guidelines for the storage of flammable liquids must be followed

Switzerland

Storage class (LK) : LK 3 - Flammable liquids

15.2. Chemical safety assessment

No chemical safety assessment has been carried out

SECTION 16: Other information

Abbreviations and acronyms:	
ADN	European Agreement concerning the International Carriage of Dangerous Goods by Inland Waterways
ADR	European Agreement concerning the International Carriage of Dangerous Goods by Road
ATE	Acute Toxicity Estimate
BCF	Bioconcentration factor
BLV	Biological limit value
BOD	Biochemical oxygen demand (BOD)
COD	Chemical oxygen demand (COD)
DMEL	Derived Minimal Effect level
DNEL	Derived-No Effect Level
EC-No.	European Community number
EC50	Median effective concentration
EN	European Standard
IARC	International Agency for Research on Cancer
IATA	International Air Transport Association
IMDG	International Maritime Dangerous Goods
LC50	Median lethal concentration
LD50	Median lethal dose
LOAEL	Lowest Observed Adverse Effect Level
NOAEC	No-Observed Adverse Effect Concentration
NOAEL	No-Observed Adverse Effect Level
NOEC	No-Observed Effect Concentration
OECD	Organisation for Economic Co-operation and Development
OEL	Occupational Exposure Limit
PBT	Persistent Bioaccumulative Toxic
PNEC	Predicted No-Effect Concentration
RID	Regulations concerning the International Carriage of Dangerous Goods by Rail
SDS	Safety Data Sheet
STP	Sewage treatment plant
ThOD	Theoretical oxygen demand (ThOD)

CYCLOPENTYL BROMIDE EXTRA PURE

Safety Data Sheet

according to the REACH Regulation (EC) 1907/2006 amended by Regulation (EU) 2020/878

Abbreviations and acronyms:

TLM	Median Tolerance Limit
VOC	Volatile Organic Compounds
CAS-No.	Chemical Abstract Service number
N.O.S.	Not Otherwise Specified
vPvB	Very Persistent and Very Bioaccumulative
ED	Endocrine disrupting properties

Full text of H- and EUH-statements:

Flam. Liq. 3	Flammable liquids, Category 3
H226	Flammable liquid and vapour.

Safety Data Sheet (SDS), EU

This information is based on our current knowledge and is intended to describe the product for the purposes of health, safety and environmental requirements only. It should not therefore be construed as guaranteeing any specific property of the product.