

TWEEN-20 EXTRA PURE

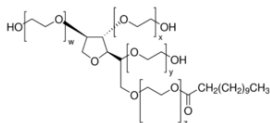
□□□□□□□□

according to the REACH Regulation (EC) 1907/2006 amended by Regulation (EU) 2020/878
SDS Reference Number: 06417
□□□□□□: 4/9/2014 □□□□□□: 12/18/2024 □□□□: 4/9/2015 □□: 1.0

□□ 1: □□□□□ □□□ □□ □□

1.1. □□□□

□□ □□ : □□
□□ □□ : TWEEN-20 EXTRA PURE
EC □□ : 500-018-3
CAS □□ : 9005-64-5
□□ □□ : 06417
□□ □□ : Esters
□□ □□ : C58H114O26
□□ □□ :



□□ □□ : Polysorbate 20, Polyoxyethylenesorbitan monolaurate, Polyethylene glycol sorbitan monolaurate

1.2. □□□□ □□ □□□□ □□ □□ □□ □□

□□ □□ □□ :
□□□□/□□□□ □□ : Laboratory chemicals, Manufacture of substances
□□□□/□□□□ □□ : Surfactants

1.3. □□□□□□□□ □□□ □□

LOBA CHEMIE PVT.LTD.
107 Wode House Road, Jehangir Villa, Colaba
400005 Mumbai
INDIA
T +91 22 6663 6663, F +91 22 6663 6699
info@lobachemie.com, www.lobachemie.com

1.4. □□□□□□

□□ □□ □□ : + 91 22 6663 6663 (9:00am - 6:00 pm)

□□ 2: □□□·□□□

2.1. □□□·□□□ □□

Regulation (EC) No.1272/2008 [CLP]□ □□ □□

□□□□ □□

□□□□□, □□ □□ □ □□□□□□□

To our knowledge, this product does not present any particular risk, provided it is handled in accordance with good occupational hygiene and safety practice.

2.2. □□□□□□□ □□□ □□□□ □□

□□ (EC) No. 1272/2008 □ □□ □□ □□[CLP]

□□ □□ □□

2.3. □□ □□

Contains no PBT and/or vPvB substances $\geq 0.1\%$ assessed in accordance with REACH Annex XIII

□□ 3: □□□□□ □□ □ □□□

3.1. □□□□

□□ □□ : □□□□□□

TWEEN-20 EXTRA PURE

□□□□□□□□

according to the REACH Regulation (EC) 1907/2006 amended by Regulation (EU) 2020/878

□□	□□□□	%
TWEEN-20	CAS □□: 9005-64-5 EC □□: 500-018-3	100

□□ 4: □□□□□□

4.1. □□□□ □□

□□ □□ □□ : If you feel unwell, seek medical advice.
□□□□ □□ : □□□□ □□ □□ □□ □□□□ □□ □□□□ □□□□. Give oxygen or artificial respiration if necessary. If you feel unwell, seek medical advice.
□□□ □□□□ □□ : □□□ □□□ □□ □□□□ □□□□. □□ □□□ □□□□: □□□□ □□/□□□ □□□□. Wash skin with plenty of water.
□□ □□□□ □□ : □□□□ □□□□□□ □□□□□□. □□ □□□□. □ □□ □□ □□□□ □□□□. □□ □□□ □□□□: □□□ □ □□/□□□ □□□□.
□□□ □□ : Rinse mouth out with water. If you feel unwell, seek medical advice. □□□□ □□□ □□□□(□□) □□□ □□□□.
First-aid measures for first aider : □□□□ □□□□ □□□ □□ □□ □□□ □□□□ □□□.

4.2. □□ □ □□□ □□ □□□ □□ □□□

□□ □ □□/□□ : None under normal conditions.
□□ □□ □ □□/□□ : None under normal conditions.
□ □□ □ □□/□□ : None under normal conditions.
□□ □ □□/□□ : None under normal conditions.

4.3. □□□□ □□ □ □□ □□ □□ □□ □□

Treat symptomatically.

□□ 5: □□·□□□□ □□□□

5.1. □□□ □□□

□□□ □□□ : dry chemical powder, alcohol-resistant foam, carbon dioxide (CO2). Water spray. Dry powder. Foam. Carbon dioxide.
□□□□ □□□ : Do not use a heavy water stream.

5.2. □□□□□□□ □□□ □□ □□□

□□ □□ : No fire hazard.
□□ □□ : No direct explosion hazard.
□□ □ □□□ □□□ □□ : Toxic fumes may be released.

5.3. □□□□□ □□ □□

□□ □□ : Fight fire from safe distance and protected location. Do not enter fire area without proper protective equipment, including respiratory protection.
□□ □□ □ □□ : Do not attempt to take action without suitable protective equipment. □□□ □□□□□□. Complete protective clothing.

□□ 6: □□□□□ □□□□

6.1. □□□ □□□□ □□ □□□ □□□□ □ □□□

□□ □□ : □□□□ □□□□ □□ □□□□ □□ □□□□. □□□ □□□ □□ □□□□□ □□□ □□ □□□ □□. □□□ □□ □□□□ □□ □□□□ □□□□□□.
□□□ □□□ :
□□ □□ : Wear recommended personal protective equipment.

TWEEN-20 EXTRA PURE

□□□□□□□□

according to the REACH Regulation (EC) 1907/2006 amended by Regulation (EU) 2020/878

- □□ : Ventilate spillage area. Evacuate unnecessary personnel.
- □□□□
- □□ : Do not attempt to take action without suitable protective equipment. □□□ □□ □□□□ □□□□□. □□ □□□ □□□ □□ 8: "□□□□ □ □□□□□"□ □□□□□.
- □□ : Stop release. Evacuate unnecessary personnel. □□□□ □□□□ □□ □□□□ □□□ □□□□.

6.2. □□□ □□□□ □□ □□□ □□□□

□□□□ □□□□ □□□.

6.3. □□ □□ □□ □□

- : Absorb spilled material with sand or earth. Contain any spills with dikes or absorbents to prevent migration and entry into sewers or streams. Stop leak without risks if possible.
- □□ : Take up liquid spill into absorbent material. □□□□ □□□□. On land, sweep or shovel into suitable containers. Soak up spills with inert solids, such as clay or diatomaceous earth as soon as possible.
- □□ □□□□ : Dispose of materials or solid residues at an authorized site.

6.4. □□ □□ □□

For further information refer to section 13.

□□ 7: □□ □ □□□□

7.1. □□□□□□

- □ □□□□□ □□ □□ : □□□□ □□ □□□□□□ □□□ □□□□ □□.
- : Ensure good ventilation of the work station. □□ □□□□ □□□□□. □, □□, □□□ □□ □□□ □□□.
- □□ : Wash hands and other exposed areas with mild soap and water before eating, drinking or smoking and when leaving work. □ □□□ □□□ □□□ □□□, □□□□ □□□□ □□□. Always wash hands after handling the product.

7.2. □□□□ □□□ □□□ □□□ □□ □□

- □□ : Keep in a cool, well-ventilated place away from heat.
- □□ : Store in original container. □□□ □□□ □□□□□. □□□ □□□ □□□□□. □□□ □□□□□.
- : Store always product in container of same material as original container.

7.3. □□ □□ □□

□□ □□

□□ 8: □□□□ □ □□□□□

8.1. □□ □□ □□

□□ □□

8.2. □□□□

- □□□ □□
- □□□ □□ : Ensure good ventilation of the work station.
- □□□
- □□□ : Wear recommended personal protective equipment.
- □□ □□ □□ :



TWEEN-20 EXTRA PURE

□□□□□□□□

according to the REACH Regulation (EC) 1907/2006 amended by Regulation (EU) 2020/878

□□□□□□

□□□:

Chemical goggles or safety glasses

Skin protection

□□□□:

Wear a mask

□□□:

Protective gloves

□□□□

□□□□□□:

Wear appropriate mask

□□□□□□

□□□□□□□□:

□□□□□□□□□□□□.

□□ 9: □□□□□□□□

9.1. □□□□□□□□□□□□□□□□

□□□□□□	: □□
□□	: Yellow to amber.
□□	: □□□□.
□□□	: 1227.72 g/mol
□□	: Odourless.
□□□□	: □□□□
□□□	: □□□□
□□□	: ≈ -7 °C
□□□□□□□□□□□□	: > 100 °C
□□□	: □□□
□□□□□	: □□□□
□□□□□	: □□□□
□□□	: 275 °C at ca.1.013 hPa - Pensky-Martens closed cup - DIN 51758
□□□□□□	: □□□□
□□□□	: □□□□
pH	: 6 – 8 at 20 °C
pH□□□□□□	: 5 %
□□(□□□□)	: 361.337 – 361.991 mm ² /s
□□(□□□□□)	: 400 mPa·s at 25 °C
□□□	: □: Soluble in water
Partition coefficient n-octanol/water (Log Kow)	: □□□□
□□□	: < 1.4 hPa at 20 °C
50°C□□□□□□□□	: □□□□
□□	: 1.105 – 1.107 g/cm ³
□□	: □□□□
20°C□□□□□□□□□□	: □□□□
□□□□	: □□□□

9.2. □□□□□□□□

□□□□

□□ 10: □□□□□□□□

10.1. □□□

The product is non-reactive under normal conditions of use, storage and transport.

TWEEN-20 EXTRA PURE

□□□□□□□□

according to the REACH Regulation (EC) 1907/2006 amended by Regulation (EU) 2020/878

10.2. □□□ □□□

Stable under normal conditions.

10.3. □□ □□□ □□□

No dangerous reactions known under normal conditions of use.

10.4. □□□ □ □□

□□□□. Open flame. Overheating. □.

10.5. □□□ □ □□

□□ □□

10.6. □□□ □□□□ □□□□

Under normal conditions of storage and use, hazardous decomposition products should not be produced.

□□ 11: □□□ □□ □□

11.1. □□ (EC) No 1272/2008 □ □□□, □□□ □□□ □□ □□

□□ □□ (□□)	:	□□□□ □□
□□ □□ (□□)	:	□□□□ □□
□□ □□ (□□)	:	□□□□ □□
□□ □□□ □□ □□□	:	□□□□ □□
		pH: 6 – 8 at 20 °C
□□ □ □□ □□ □□□	:	□□□□ □□
		pH: 6 – 8 at 20 °C
□□□ □□ □□ □□□	:	□□□□ □□
□□□□ □□□□	:	□□□□ □□
□□□	:	□□□□ □□
□□□□	:	□□□□ □□
□□ □□□□ □□ (1□ □□)	:	□□□□ □□
□□ □□□□ □□ (□□ □□)	:	□□□□ □□
□□ □□□	:	□□□□ □□

TWEEN-20 EXTRA PURE (9005-64-5)	
□□(□□□)	361.337 – 361.991 mm ² /s

11.2. □□ □□ □□

□□ □□

□□ 12: □□□ □□□ □□

12.1. □□

□□□ - □□	:	The product is not considered harmful to aquatic organisms nor to cause long-term adverse effects in the environment.
□□ □□□□ □□□	:	□□□□ □□
□□ □□□□ □□□	:	□□□□ □□

12.2. □□□ □ □□□

TWEEN-20 EXTRA PURE (9005-64-5)	
□□□ □ □□□	□□ □□ □□

12.3. □□ □□□

□□ □□

TWEEN-20 EXTRA PURE

□□□□□□□□

according to the REACH Regulation (EC) 1907/2006 amended by Regulation (EU) 2020/878

12.4. □□ □□□

□□ □□

12.5. PBT □ vPvB □□ □□

□□ □□

12.6. □□□ □□ □□

□□ □□

12.7. □□ □□ □□

□□ □□

□□ 13: □□□ □□□□

13.1. □□□ □□□

- □□(□□□) : Disposal must be done according to official regulations.
- □□□ : Dispose of contents/container in accordance with licensed collector's sorting instructions.
- □□ □□ □□ : Disposal must be done according to official regulations.
- /□□ □□ □□□□ : Disposal must be done according to official regulations.
- □□ : Do not re-use empty containers.

□□ 14: □□□ □□□ □□

ADR / IMDG / IATA / ADN / RID □□ □□

14.1. UN □□ □□ ID □□

□□ □□□□ □□□□

14.2. UN □□ □□□

- □□□ (ADR) : Not regulated
- □□□ (IMDG) : Not regulated
- □□□ (IATA) : Not regulated
- □□□ (ADN) : Not regulated
- □□□ (RID) : Not regulated

14.3. □□□□□ □□□ □□

ADR
□□□□□ □□□ □□ (ADR) : Not regulated

IMDG
□□□□□ □□□ □□ (IMDG) : Not regulated

IATA
□□□□□ □□□ □□ (IATA) : Not regulated

ADN
□□□□□ □□□ □□ (ADN) : Not regulated

RID
□□□□□ □□□ □□ (RID) : Not regulated

14.4. □□□□

- □□ (ADR) : Not regulated
- □□(IMDG) : Not regulated
- □□ (IATA) : Not regulated
- □□(ADN) : Not regulated

TWEEN-20 EXTRA PURE

□□□□□□□□

according to the REACH Regulation (EC) 1907/2006 amended by Regulation (EU) 2020/878

WGK : WGK 3, □□ □□ □□□ (Classification according to AwSV).
 □□ □□ □□(12. BImSchV) : □□ □□ □□(12. BImSchV)□ □□ □□ □□

□□□□

SZW-lijst van kankerverwekkende stoffen : □□□ □□
 SZW-lijst van mutagene stoffen : □□□ □□
 SZW-lijst van reprotoxische stoffen – Borstvoeding : □□□ □□
 SZW-lijst van reprotoxische stoffen – Vruchtbaarheid : □□□ □□
 SZW-lijst van reprotoxische stoffen – Ontwikkeling : □□□ □□

15.2. □□ □□ □□□ □□

No chemical safety assessment has been carried out

□□ 16: □ □□ □□□□

□□ □ □□□□:	
ACGIH	American Conference of Government Industrial Hygienists
ADN	European Agreement concerning the International Carriage of Dangerous Goods by Inland Waterways
ADR	European Agreement concerning the International Carriage of Dangerous Goods by Road
ATE	Acute Toxicity Estimate
BCF	Bioconcentration factor
BLV	□□ □□ □
BOD	Biochemical oxygen demand (BOD)
CAS □□	□□□□ □□ □□ □□(CAS)
CLP	Classification Labelling Packaging Regulation; Regulation (EC) No 1272/2008
COD	□□□ □□ □□□
CSA	□□ □□ □□□ □□
DMEL	Derived Minimal Effect level
DNEL	□□ □□□ □□
EC □□	□□ □□□ □□
EC50	Median effective concentration
ED	□□□ □□□□
EN	□□ □□
EWC	European waste catalogue
IARC	International Agency for Research on Cancer
IATA	International Air Transport Association
IMDG	International Maritime Dangerous Goods
LC50	Median lethal concentration
LD50	Median lethal dose
LOAEL	Lowest Observed Adverse Effect Level
Log Kow	Partition coefficient n-octanol/water (Log Kow)
Log Pow	Partition coefficient n-octanol/water (Log Pow)
MAK	maximum workplace concentration
NOAEC	No-Observed Adverse Effect Concentration
NOAEL	No-Observed Adverse Effect Level

