

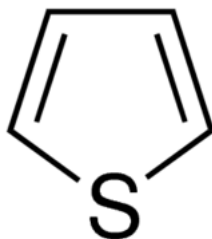
CAS No: 110-02-1 MSDS

MATERIAL SAFETY DATA SHEET (MSDS)

SECTION 1: Identification of the substance/mixture and of the company/undertaking

1.1. Product identifier

Product form : Substance
:
EC no : 203-729-4
CAS No : 110-02-1
Product code : 6282D
Chemical structure :



Synonyms : Thiofuran / Thiole

1.2. Relevant identified uses of the substance or mixture and uses advised against

1.2.1. Relevant identified uses

Use of the substance/mixture : Laboratory chemicals, Manufacture of substances

1.2.2. Uses advised against

No additional information available

1.3. Details of the supplier of the safety data sheet

LOBA CHEMIE PVT.LTD.
107 Wode House Road, Jehangir Villa, Colaba
400005 Mumbai - INDIA
T +91 22 6663 6663 - F +91 22 6663 6699
info@lobachemie.com - www.lobachemie.com

1.4. Emergency telephone number

Emergency number : + 91 22 6663 6663 (9:00am - 6:00 pm)

SECTION 2: Hazards identification

2.1. Classification of the substance or mixture

Classification according to Regulation (EC) No. 1272/2008 [CLP]

Flammable liquids, H225
Category 2
Acute toxicity (oral), H302
Category 4
Acute toxicity (inhal.), H331
Category 3
Skin corrosion/irritation, H315
Category 2

THIOPHENE Extra Pure

Safety Data Sheet

Serious eye damage/eye irritation, Category 1
Specific target organ toxicity — Single exposure, Category 3,
Respiratory tract irritation H318
H335

Full text of classification categories and H statements : see section 16

Classification according to Directive 67/548/EEC or 1999/45/EC

F; R11
Xn; R20/22
Xi; R41
Xi; R37/38

Full text of R-phrases: see section 16

Adverse physicochemical, human health and environmental effects

No additional information available

2.2. Label elements

Labelling according to Regulation (EC) No. 1272/2008 [CLP]

Hazard pictograms (CLP) :



GHS02

GHS05

GHS06

Signal word (CLP) :

Danger

Hazard statements (CLP) :

H225 - Highly flammable liquid and vapour
H302 - Harmful if swallowed
H315 - Causes skin irritation
H318 - Causes serious eye damage
H331 - Toxic if inhaled
H335 - May cause respiratory irritation

Precautionary statements (CLP) :

P210 - Keep away from heat/sparks/open flames/hot surfaces. - No smoking
P261 - Avoid breathing dust/fume/gas/mist/vapours/spray
P280 - Wear protective gloves/protective clothing/eye protection/face protection
P305+P351+P338 - IF IN EYES: Rinse cautiously with water for several minutes. Remove contact lenses, if present and easy to do. Continue rinsing

2.3. Other hazards

No additional information available

SECTION 3: Composition/information on ingredients

3.1. Substance

Name : THIOPHENE Extra Pure
CAS No : 110-02-1

THIOPHENE Extra Pure

Safety Data Sheet

EC no : 203-729-4

Full text of R- and H-phrases: see section 16

3.2. Mixture

Not applicable

SECTION 4: First aid measures

4.1. Description of first aid measures

- First-aid measures after inhalation : Remove victim to fresh air and keep at rest in a position comfortable for breathing. Call a POISON CENTER or doctor/physician if you feel unwell.
- First-aid measures after skin contact : Rinse skin with water/shower. Remove/Take off immediately all contaminated clothing. Wash with plenty of soap and water. Wash contaminated clothing before reuse. If skin irritation occurs: Get medical advice/attention. Specific treatment (see ... on this label).
- First-aid measures after eye contact : Rinse cautiously with water for several minutes. Remove contact lenses, if present and easy to do. Continue rinsing. Immediately call a POISON CENTER or doctor/physician.
- First-aid measures after ingestion : Rinse mouth. Call a POISON CENTER or doctor/physician if you feel unwell.

4.2. Most important symptoms and effects, both acute and delayed

- Symptoms/injuries after inhalation : May cause respiratory irritation. Toxic if inhaled.
- Symptoms/injuries after skin contact : Causes skin irritation.
- Symptoms/injuries after eye contact : Causes serious eye damage.
- Symptoms/injuries after ingestion : Harmful if swallowed.

4.3. Indication of any immediate medical attention and special treatment needed

Treat symptomatically.

SECTION 5: Firefighting measures

5.1. Extinguishing media

- Suitable extinguishing media : dry chemical powder, alcohol-resistant foam, carbon dioxide (CO₂).
- Unsuitable extinguishing media : Do not use a heavy water stream.

5.2. Special hazards arising from the substance or mixture

- Fire hazard : Highly flammable liquid and vapour.
- Explosion hazard : May form flammable/explosive vapour-air mixture.

5.3. Advice for firefighters

- Protection during firefighting : Do not attempt to take action without suitable protective equipment.

SECTION 6: Accidental release measures

6.1. Personal precautions, protective equipment and emergency procedures

- General measures : Remove ignition sources. Use special care to avoid static electric charges. No naked lights. No smoking.

6.1.1. For non-emergency personnel

- Emergency procedures : Evacuate unnecessary personnel.

6.1.2. For emergency responders

- Protective equipment : Use personal protective equipment as required.
- Emergency procedures : Stop release.

THIOPHENE Extra Pure

Safety Data Sheet

6.2. Environmental precautions

Avoid release to the environment.

6.3. Methods and material for containment and cleaning up

Methods for cleaning up : Collect spillage. Soak up spills with inert solids, such as clay or diatomaceous earth as soon as possible. On land, sweep or shovel into suitable containers.

6.4. Reference to other sections

No additional information available

SECTION 7: Handling and storage

7.1. Precautions for safe handling

Additional hazards when processed : Handle empty containers with care because residual vapours are flammable.
Precautions for safe handling : No naked lights. No smoking. Use only non-sparking tools. Avoid breathing dust/fume/gas/mist/vapours/spray. Use only outdoors or in a well-ventilated area.
Hygiene measures : Do not eat, drink or smoke when using this product. Wash ... thoroughly after handling.

7.2. Conditions for safe storage, including any incompatibilities

Storage conditions : Keep in fireproof place. Keep container tightly closed. Store in original container. Store in a well-ventilated place.
Incompatible materials : Heat sources.

7.3. Specific end use(s)

No additional information available

SECTION 8: Exposure controls/personal protection

8.1. Control parameters

No additional information available

8.2. Exposure controls

Hand protection : protective gloves
Eye protection : Chemical goggles or safety glasses
Skin and body protection : Wear suitable protective clothing
Respiratory protection : Wear respiratory protection

SECTION 9: Physical and chemical properties

9.1. Information on basic physical and chemical properties

Physical state : Liquid
Molecular mass : 84.14 g/mol
Colour : Light yellow.
Odour : benzene-like.
Odour threshold : No data available
pH : No data available

THIOPHENE Extra Pure

Safety Data Sheet

Relative evaporation rate (butylacetate=1)	: No data available
Melting point	: 3.82 °C
Freezing point	: No data available
Boiling point	: 84 °C
Flash point	: -1 °C
Auto-ignition temperature	: 395 °C
Decomposition temperature	: No data available
Flammability (solid, gas)	: Flammable Highly flammable liquid and vapour
Vapour pressure	: No data available
Relative vapour density at 20 °C	: 2.9
Relative density	: No data available
Density	: 1.1 g/cm ³
Solubility	: Water: Insoluble in cold water
Log Pow	: No data available
Viscosity, kinematic	: No data available
Viscosity, dynamic	: No data available
Explosive properties	: No data available
Oxidising properties	: No data available
Explosive limits	: 0.015 - 0.125 vol %

9.2. Other information

No additional information available

SECTION 10: Stability and reactivity

10.1. Reactivity

No additional information available

10.2. Chemical stability

Highly flammable liquid and vapour. May form flammable/explosive vapour-air mixture.

10.3. Possibility of hazardous reactions

No additional information available

10.4. Conditions to avoid

Open flame. Direct sunlight. Overheating.

10.5. Incompatible materials

No additional information available

10.6. Hazardous decomposition products

May release flammable gases.

THIOPHENE Extra Pure

Safety Data Sheet

SECTION 11: Toxicological information

11.1. Information on toxicological effects

Acute toxicity : Oral: Harmful if swallowed. Inhalation: Toxic if inhaled.

Skin corrosion/irritation : Causes skin irritation.

Serious eye damage/irritation : Causes serious eye damage.

Respiratory or skin sensitisation : Not classified

Germ cell mutagenicity : Not classified

Carcinogenicity : Not classified

Reproductive toxicity : Not classified

Specific target organ toxicity (single exposure) : May cause respiratory irritation.

Specific target organ toxicity (repeated exposure) : Not classified

Aspiration hazard : Not classified

Potential adverse human health effects and symptoms : Harmful if swallowed.

SECTION 12: Ecological information

12.1. Toxicity

No additional information available

12.2. Persistence and degradability

No additional information available

12.3. Bioaccumulative potential

No additional information available

12.4. Mobility in soil

No additional information available

12.5. Results of PBT and vPvB assessment

No additional information available

12.6. Other adverse effects

No additional information available

THIOPHENE Extra Pure

Safety Data Sheet

SECTION 13: Disposal considerations

13.1. Waste treatment methods

Product/Packaging disposal recommendations	: Dispose of contents/container to ...
Additional information	: Handle empty containers with care because residual vapours are flammable.

SECTION 14: Transport information

In accordance with ADR / RID / IMDG / IATA / ADN

14.1. UN number

UN-No. (ADR)	: 2414
UN-No. (IMDG)	: 2414
UN-No.(IATA)	: 2414
UN-No.(ADN)	: 2414
UN-No. (RID)	: 2414

14.2. UN proper shipping name

Proper Shipping Name (ADR)	: THIOPHENE
Proper Shipping Name (IMDG)	: THIOPHENE
Proper Shipping Name (IATA)	: THIOPHENE
Proper Shipping Name (ADN)	: THIOPHENE
Proper Shipping Name (RID)	: THIOPHENE
Transport document description (ADR)	: UN 2414 THIOPHENE, 3, II, (D/E)
Transport document description (IMDG)	: UN 2414 THIOPHENE, 3, II (-9°C c.c.)
Transport document description (IATA)	: UN 2414 THIOPHENE, 3, II
Transport document description (ADN)	: UN 2414 THIOPHENE, 3, II
Transport document description (RID)	: UN 2414 THIOPHENE, 3, II

14.3. Transport hazard class(es)

ADR

Transport hazard class(es) (ADR)	: 3
Danger labels (ADR)	: 3



IMDG

Transport hazard class(es) (IMDG)	: 3
Danger labels (IMDG)	: 3



IATA

Transport hazard class(es) (IATA)	: 3
Hazard labels (IATA)	: 3

THIOPHENE Extra Pure

Safety Data Sheet



ADN

Transport hazard class(es) (ADN) : 3

Danger labels (ADN) : 3



RID

Transport hazard class(es) (RID) : 3

Danger labels (RID) : 3



14.4. Packing group

Packing group (ADR) : II

Packing group (IMDG) : II

Packing group (IATA) : II

Packing group (ADN) : II

Packing group (RID) : II

14.5. Environmental hazards

Dangerous for the environment : No

Marine pollutant : No

Other information : No supplementary information available

14.6. Special precautions for user

- Overland transport

Classification code (ADR) : F1

Limited quantities (ADR) : 1L

Excepted quantities (ADR) : E2

Packing instructions (ADR) : P001, IBC02, R001

Mixed packing provisions (ADR) : MP19

Portable tank and bulk container instructions (ADR) : T4

Portable tank and bulk container special provisions (ADR) : TP1

Tank code (ADR) : LGBF

Vehicle for tank carriage : FL

Transport category (ADR) : 2

Special provisions for carriage - Operation (ADR) : S2, S20

Hazard identification number (Kemler No.) : 33

THIOPHENE Extra Pure

Safety Data Sheet

Orange plates

: **33**
2414

Tunnel restriction code (ADR) : D/E
EAC code : 3WE
APP code : A(fl)

- Transport by sea

Limited quantities (IMDG) : 1 L
Excepted quantities (IMDG) : E2
Packing instructions (IMDG) : P001
IBC packing instructions (IMDG) : IBC02
Tank instructions (IMDG) : T4
Tank special provisions (IMDG) : TP1
EmS-No. (Fire) : F-E
EmS-No. (Spillage) : S-D
Stowage category (IMDG) : B
Stowage and handling (IMDG) : SW2
Flash point (IMDG) : -9°C c.c.
MFAG-No : 130

- Air transport

PCA Excepted quantities (IATA) : E2
PCA Limited quantities (IATA) : Y341
PCA limited quantity max net quantity (IATA) : 1L
PCA packing instructions (IATA) : 353
PCA max net quantity (IATA) : 5L
CAO packing instructions (IATA) : 364
CAO max net quantity (IATA) : 60L
ERG code (IATA) : 3H

- Inland waterway transport

Classification code (ADN) : F1
Limited quantities (ADN) : 1 L
Excepted quantities (ADN) : E2
Carriage permitted (ADN) : T
Equipment required (ADN) : PP, EX, A
Ventilation (ADN) : VE01
Number of blue cones/lights (ADN) : 1

- Rail transport

Classification code (RID) : F1
Limited quantities (RID) : 1L
Excepted quantities (RID) : E2
Packing instructions (RID) : P001, IBC02, R001
Mixed packing provisions (RID) : MP19
Portable tank and bulk container instructions (RID) : T4
Portable tank and bulk container special provisions (RID) : TP1
Tank codes for RID tanks (RID) : LGBF
Transport category (RID) : 2
Colis express (express parcels) (RID) : CE7
Hazard identification number (RID) : 33

THIOPHENE Extra Pure

Safety Data Sheet

14.7. Transport in bulk according to Annex II of MARPOL 73/78 and the IBC Code

Not applicable

SECTION 15: Regulatory information

15.1. Safety, health and environmental regulations/legislation specific for the substance or mixture

15.1.1. EU-Regulations

No REACH Annex XVII restrictions

THIOPHENE Extra Pure is not on the REACH Candidate List

THIOPHENE Extra Pure is not on the REACH Annex XIV List

15.1.2. National regulations

Germany

AwSV/VwVwS Annex reference : Water hazard class (WGK) 3, strongly hazardous to water (Classification according to VwVwS, Annex 2; WGK No 921)

12th Ordinance Implementing the Federal Immission Control Act - 12.BImSchV : Is not subject of the 12. BImSchV (Hazardous Incident Ordinance)

Denmark

Classification remarks : Emergency management guidelines for the storage of flammable liquids must be followed

Recommendations Danish Regulation : Young people below the age of 18 years are not allowed to use the product

15.2. Chemical safety assessment

No additional information available

SECTION 16: Other information

Full text of R-, H- and EUH-phrases:

Acute Tox. 3 (Inhalation)	Acute toxicity (inhal.), Category 3
Acute Tox. 4 (Oral)	Acute toxicity (oral), Category 4
Eye Dam. 1	Serious eye damage/eye irritation, Category 1
Flam. Liq. 2	Flammable liquids, Category 2
Skin Irrit. 2	Skin corrosion/irritation, Category 2
STOT SE 3	Specific target organ toxicity — Single exposure, Category 3, Respiratory tract irritation
H225	Highly flammable liquid and vapour
H302	Harmful if swallowed
H315	Causes skin irritation
H318	Causes serious eye damage

THIOPHENE Extra Pure

Safety Data Sheet

H331	Toxic if inhaled
H335	May cause respiratory irritation
R11	Highly flammable
R20/22	Harmful by inhalation and if swallowed
R37/38	Irritating to respiratory system and skin
R41	Risk of serious damage to eyes
F	Highly flammable
Xi	Irritant
Xn	Harmful

This information is based on our current knowledge and is intended to describe the product for the purposes of health, safety and environmental requirements only. It should not therefore be construed as guaranteeing any specific property of the product