

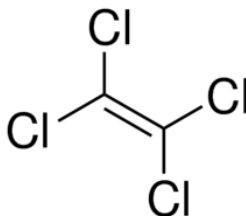
CAS-No.: 127-18-4 MSDS

MATERIAL SAFETY DATA SHEET (MSDS)

SECTION 1: Identification of the substance/mixture and of the company/undertaking

1.1. Product identifier

Product form : Substance
:
EC Index-No. : 602-028-00-4
EC-No. : 204-825-9
CAS-No. : 127-18-4
Product code : 00300
Formula : C₂Cl₄
Chemical structure :



Synonyms : Perchloroethylene / PCE

1.2. Relevant identified uses of the substance or mixture and uses advised against

1.2.1. Relevant identified uses

Use of the substance/mixture : Laboratory chemicals, Manufacture of substances

1.2.2. Uses advised against

No additional information available

1.3. Details of the supplier of the safety data sheet

LOBA CHEMIE PVT.LTD.
107 Wode House Road, Jehangir Villa, Colaba
400005 Mumbai - INDIA
T +91 22 6663 6663 - F +91 22 6663 6699
info@lobachemie.com - www.lobachemie.com

1.4. Emergency telephone number

Emergency number : + 91 22 6663 6663 (9:00am - 6:00 pm)

SECTION 2: Hazards identification

2.1. Classification of the substance or mixture

Classification according to Regulation (EC) No. 1272/2008 [CLP]

Skin corrosion/irritation, H315
Category 2
Carcinogenicity, Category H351
2
Hazardous to the aquatic environment — Chronic H411

TETRACHLOROETHYLENE Extra Pure

Safety Data Sheet

according to Regulation (EC) No. 1907/2006 (REACH) with its amendment Regulation (EU) 2015/830

Hazard, Category 2

Full text of hazard classes and H-statements : see section 16

Classification according to Directive 67/548/EEC [DSD] or 1999/45/EC [DPD]

Carc.Cat.3; R40

N; R51/53

Full text of R-phrases: see section 16

Adverse physicochemical, human health and environmental effects

No additional information available

2.2. Label elements

Labelling according to Regulation (EC) No. 1272/2008 [CLP]

Hazard pictograms (CLP) :



GHS07

GHS08

GHS09

Signal word (CLP) : Warning

Hazard statements (CLP) : H315 - Causes skin irritation.
H351 - Suspected of causing cancer.
H411 - Toxic to aquatic life with long lasting effects.

Precautionary statements (CLP) : P273 - Avoid release to the environment.
P280 - Wear protective gloves, protective clothing, face protection, eye protection.

2.3. Other hazards

No additional information available

SECTION 3: Composition/information on ingredients

3.1. Substances

Name : TETRACHLOROETHYLENE Extra Pure
CAS-No. : 127-18-4
EC-No. : 204-825-9
EC Index-No. : 602-028-00-4

Full text of R- and H-statements: see section 16

3.2. Mixtures

Not applicable

TETRACHLOROETHYLENE Extra Pure

Safety Data Sheet

according to Regulation (EC) No. 1907/2006 (REACH) with its amendment Regulation (EU) 2015/830

SECTION 4: First aid measures

4.1. Description of first aid measures

First-aid measures general	: Suspected of causing cancer.
First-aid measures after inhalation	: Assure fresh air breathing. If breathing is difficult, remove victim to fresh air and keep at rest in a position comfortable for breathing.
First-aid measures after skin contact	: Wash with plenty of water/.... Get immediate medical advice/attention.
First-aid measures after eye contact	: Rinse cautiously with water for several minutes. Remove contact lenses, if present and easy to do. Continue rinsing. Get medical advice/attention.
First-aid measures after ingestion	: Rinse mouth. Do not induce vomiting. Get medical advice/attention.

4.2. Most important symptoms and effects, both acute and delayed

Symptoms/effects after skin contact	: Causes skin irritation.
Chronic symptoms	: Suspected carcinogen.

4.3. Indication of any immediate medical attention and special treatment needed

Treat symptomatically.

SECTION 5: Firefighting measures

5.1. Extinguishing media

Suitable extinguishing media	: Carbon dioxide. Dry powder. Foam. Water spray.
Unsuitable extinguishing media	: Do not use extinguishing media containing water.

5.2. Special hazards arising from the substance or mixture

No additional information available

5.3. Advice for firefighters

Protection during firefighting	: Do not enter fire area without proper protective equipment, including respiratory protection.
--------------------------------	---

SECTION 6: Accidental release measures

6.1. Personal precautions, protective equipment and emergency procedures

6.1.1. For non-emergency personnel

Emergency procedures	: Evacuate unnecessary personnel.
----------------------	-----------------------------------

6.1.2. For emergency responders

Protective equipment	: Use personal protective equipment as required.
----------------------	--

6.2. Environmental precautions

Avoid release to the environment.

6.3. Methods and material for containment and cleaning up

Methods for cleaning up	: On land, sweep or shovel into suitable containers. Collect spillage.
-------------------------	--

6.4. Reference to other sections

No additional information available

SECTION 7: Handling and storage

7.1. Precautions for safe handling

Precautions for safe handling	: Obtain special instructions before use. Do not handle until all safety precautions have been read and understood. Avoid contact with skin and eyes. Do not breathe vapours.
Hygiene measures	: Wash hands and other exposed areas with mild soap and water before eating, drinking or smoking and when leaving work.

TETRACHLOROETHYLENE Extra Pure

Safety Data Sheet

according to Regulation (EC) No. 1907/2006 (REACH) with its amendment Regulation (EU) 2015/830

7.2. Conditions for safe storage, including any incompatibilities

Storage conditions : Store in a well-ventilated place. Keep container tightly closed.

7.3. Specific end use(s)

No additional information available

SECTION 8: Exposure controls/personal protection

8.1. Control parameters

No additional information available

8.2. Exposure controls

Hand protection : Protective gloves
Eye protection : Chemical goggles or safety glasses
Skin and body protection : Wear suitable protective clothing
Respiratory protection : [In case of inadequate ventilation] wear respiratory protection.

SECTION 9: Physical and chemical properties

9.1. Information on basic physical and chemical properties

Physical state : Liquid
Colour : Clear Colorless.
Odour : ethereal odor.
Odour threshold : No data available
pH : No data available
Relative evaporation rate (butylacetate=1) : 0.33
Melting point : -22 °C
Freezing point : No data available
Boiling point : 121 °C
Flash point : No data available
Auto-ignition temperature : No data available
Decomposition temperature : No data available
Flammability (solid, gas) : No data available
Vapour pressure : 17.3 hPa at 20°C
Relative vapour density at 20 °C : 5.7
Relative density : No data available
Density : 1.623 g/cm³

TETRACHLOROETHYLENE Extra Pure

Safety Data Sheet

according to Regulation (EC) No. 1907/2006 (REACH) with its amendment Regulation (EU) 2015/830

Solubility	: Water: 0.015 g/100ml
Log Pow	: 3.4
Viscosity, kinematic	: No data available
Viscosity, dynamic	: No data available
Explosive properties	: No data available
Oxidising properties	: No data available
Explosive limits	: No data available

9.2. Other information

No additional information available

SECTION 10: Stability and reactivity

10.1. Reactivity

No additional information available

10.2. Chemical stability

Stable under normal conditions.

10.3. Possibility of hazardous reactions

No additional information available

10.4. Conditions to avoid

Direct sunlight. Air contact.

10.5. Incompatible materials

No additional information available

10.6. Hazardous decomposition products

No additional information available

SECTION 11: Toxicological information

11.1. Information on toxicological effects

Acute toxicity	: Not classified
Skin corrosion/irritation	: Causes skin irritation.
Serious eye damage/irritation	: Not classified
Respiratory or skin sensitisation	: Not classified
Germ cell mutagenicity	: Not classified
Carcinogenicity	: Suspected of causing cancer.
Reproductive toxicity	: Not classified
STOT-single exposure	: Not classified
STOT-repeated exposure	: Not classified
Aspiration hazard	: Not classified

TETRACHLOROETHYLENE Extra Pure

Safety Data Sheet

according to Regulation (EC) No. 1907/2006 (REACH) with its amendment Regulation (EU) 2015/830

SECTION 12: Ecological information

12.1. Toxicity

Ecology - water : Toxic to aquatic life with long lasting effects.

12.2. Persistence and degradability

TETRACHLOROETHYLENE Extra Pure (127-18-4)

Persistence and degradability	May cause long-term adverse effects in the environment.
-------------------------------	---

12.3. Bioaccumulative potential

TETRACHLOROETHYLENE Extra Pure (127-18-4)

Log Pow	3.4
---------	-----

12.4. Mobility in soil

No additional information available

12.5. Results of PBT and vPvB assessment

No additional information available

12.6. Other adverse effects

No additional information available

SECTION 13: Disposal considerations

13.1. Waste treatment methods

Product/Packaging disposal recommendations : Dispose of contents/container to hazardous or special waste collection point, in accordance with local, regional, national and/or international regulation.

SECTION 14: Transport information

In accordance with ADR / RID / IMDG / IATA / ADN

14.1. UN number

UN-No. (ADR)	: 1897
UN-No. (IMDG)	: 1897
UN-No. (IATA)	: 1897
UN-No. (ADN)	: 1897
UN-No. (RID)	: 1897

14.2. UN proper shipping name

Proper Shipping Name (ADR)	: TETRACHLOROETHYLENE
Proper Shipping Name (IMDG)	: TETRACHLOROETHYLENE
Proper Shipping Name (IATA)	: Tetrachloroethylene
Proper Shipping Name (ADN)	: TETRACHLOROETHYLENE

TETRACHLOROETHYLENE Extra Pure

Safety Data Sheet

according to Regulation (EC) No. 1907/2006 (REACH) with its amendment Regulation (EU) 2015/830

Proper Shipping Name (RID)	: TETRACHLOROETHYLENE
Transport document description (ADR)	: UN 1897 TETRACHLOROETHYLENE, 6.1, III, (E), ENVIRONMENTALLY HAZARDOUS
Transport document description (IMDG)	: UN 1897 TETRACHLOROETHYLENE, 6.1, III, MARINE POLLUTANT/ENVIRONMENTALLY HAZARDOUS
Transport document description (IATA)	: UN 1897 Tetrachloroethylene, 6.1, III, ENVIRONMENTALLY HAZARDOUS
Transport document description (ADN)	: UN 1897 TETRACHLOROETHYLENE, 6.1, III, ENVIRONMENTALLY HAZARDOUS
Transport document description (RID)	: UN 1897 TETRACHLOROETHYLENE, 6.1, III, ENVIRONMENTALLY HAZARDOUS

14.3. Transport hazard class(es)

ADR

Transport hazard class(es) (ADR)	: 6.1
Danger labels (ADR)	: 6.1



IMDG

Transport hazard class(es) (IMDG)	: 6.1
Danger labels (IMDG)	: 6.1



IATA

Transport hazard class(es) (IATA)	: 6.1
Hazard labels (IATA)	: 6.1



ADN

Transport hazard class(es) (ADN)	: 6.1
Danger labels (ADN)	: 6.1



RID

Transport hazard class(es) (RID)	: 6.1
Danger labels (RID)	: 6.1

TETRACHLOROETHYLENE Extra Pure

Safety Data Sheet

according to Regulation (EC) No. 1907/2006 (REACH) with its amendment Regulation (EU) 2015/830



14.4. Packing group

Packing group (ADR)	: III
Packing group (IMDG)	: III
Packing group (IATA)	: III
Packing group (ADN)	: III
Packing group (RID)	: III

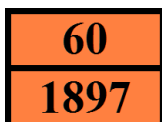
14.5. Environmental hazards

Dangerous for the environment	: Yes
Marine pollutant	: Yes
Other information	: No supplementary information available

14.6. Special precautions for user

- Overland transport

Classification code (ADR)	: T1
Limited quantities (ADR)	: 5I
Excepted quantities (ADR)	: E1
Packing instructions (ADR)	: P001, IBC03, LP01, R001
Mixed packing provisions (ADR)	: MP19
Portable tank and bulk container instructions (ADR)	: T4
Portable tank and bulk container special provisions (ADR)	: TP1
Tank code (ADR)	: L4BH
Tank special provisions (ADR)	: TU15, TE19
Vehicle for tank carriage	: AT
Transport category (ADR)	: 2
Special provisions for carriage - Packages (ADR)	: V12
Special provisions for carriage - Loading, unloading and handling (ADR)	: CV13, CV28
Special provisions for carriage - Operation (ADR)	: S9
Hazard identification number (Kemler No.)	: 60
Orange plates	:



Tunnel restriction code (ADR)	: E
EAC code	: 2Z

- Transport by sea

Packing instructions (IMDG)	: P001, LP01
IBC packing instructions (IMDG)	: IBC03
Tank instructions (IMDG)	: T4
Tank special provisions (IMDG)	: TP1
EmS-No. (Fire)	: F-A
EmS-No. (Spillage)	: S-A

TETRACHLOROETHYLENE Extra Pure

Safety Data Sheet

according to Regulation (EC) No. 1907/2006 (REACH) with its amendment Regulation (EU) 2015/830

Stowage category (IMDG)	: A
Stowage and handling (IMDG)	: SW2
Properties and observations (IMDG)	: Colourless liquid with an ethereal odour. When involved in a fire, evolves extremely toxic fumes (phosgene). Toxic if swallowed, by skin contact or by inhalation.
MFAG-No	: 160

- Air transport

PCA Excepted quantities (IATA)	: E1
PCA Limited quantities (IATA)	: Y642
PCA limited quantity max net quantity (IATA)	: 2L
PCA packing instructions (IATA)	: 655
PCA max net quantity (IATA)	: 60L
CAO packing instructions (IATA)	: 663
CAO max net quantity (IATA)	: 220L
ERG code (IATA)	: 6L

- Inland waterway transport

Classification code (ADN)	: T1
Special provisions (ADN)	: 802
Limited quantities (ADN)	: 5 L
Excepted quantities (ADN)	: E1
Carriage permitted (ADN)	: T
Equipment required (ADN)	: PP, EP, TOX, A
Ventilation (ADN)	: VE02
Number of blue cones/lights (ADN)	: 0

- Rail transport

Classification code (RID)	: T1
Excepted quantities (RID)	: E1
Packing instructions (RID)	: P001, IBC03, LP01, R001
Mixed packing provisions (RID)	: MP19
Portable tank and bulk container instructions (RID)	: T4
Portable tank and bulk container special provisions (RID)	: TP1
Tank codes for RID tanks (RID)	: L4BH
Special provisions for RID tanks (RID)	: TU15
Transport category (RID)	: 2
Special provisions for carriage – Packages (RID)	: W12
Special provisions for carriage - Loading, unloading and handling (RID)	: CW13, CW28, CW31
Colis express (express parcels) (RID)	: CE8
Hazard identification number (RID)	: 60

14.7. Transport in bulk according to Annex II of MARPOL 73/78 and the IBC Code

Not applicable

SECTION 15: Regulatory information

15.1. Safety, health and environmental regulations/legislation specific for the substance or mixture

15.1.1. EU-Regulations

No REACH Annex XVII restrictions

TETRACHLOROETHYLENE Extra Pure is not on the REACH Candidate List

TETRACHLOROETHYLENE Extra Pure

Safety Data Sheet

according to Regulation (EC) No. 1907/2006 (REACH) with its amendment Regulation (EU) 2015/830

TETRACHLOROETHYLENE Extra Pure is not on the REACH Annex XIV List

15.1.2. National regulations

Germany

12th Ordinance Implementing the Federal Immission Control Act - 12.BImSchV : Is not subject of the 12. BImSchV (Hazardous Incident Ordinance)

Netherlands

SZW-lijst van kankerverwekkende stoffen : The substance is not listed

SZW-lijst van mutagene stoffen : The substance is not listed

NIET-limitatieve lijst van voor de voortplanting giftige stoffen – Borstvoeding : The substance is not listed

NIET-limitatieve lijst van voor de voortplanting giftige stoffen – Vruchtbaarheid : The substance is not listed

NIET-limitatieve lijst van voor de voortplanting giftige stoffen – Ontwikkeling : TETRACHLOROETHYLENE Extra Pure is listed

Denmark

Recommendations Danish Regulation : Young people below the age of 18 years are not allowed to use the product
Pregnant/breastfeeding women working with the product must not be in direct contact with the product
The requirements from the Danish Working Environment Authorities regarding work with carcinogens must be followed during use and disposal

15.2. Chemical safety assessment

No additional information available

SECTION 16: Other information

Full text of R-, H- and EUH-statements:

Aquatic Chronic 2	Hazardous to the aquatic environment — Chronic Hazard, Category 2
Carc. 2	Carcinogenicity, Category 2
Skin Irrit. 2	Skin corrosion/irritation, Category 2
H315	Causes skin irritation.
H351	Suspected of causing cancer.
H411	Toxic to aquatic life with long lasting effects.
R40	Limited evidence of a carcinogenic effect
R51/53	Toxic to aquatic organisms, may cause long-term adverse effects in the aquatic environment
N	Dangerous for the environment

TETRACHLOROETHYLENE Extra Pure

Safety Data Sheet

according to Regulation (EC) No. 1907/2006 (REACH) with its amendment Regulation (EU) 2015/830

This information is based on our current knowledge and is intended to describe the product for the purposes of health, safety and environmental requirements only. It should not therefore be construed as guaranteeing any specific property of the product