

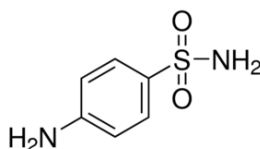
CAS No: 63-74-1 MSDS

MATERIAL SAFETY DATA SHEET (MSDS)

SECTION 1: Identification of the substance/mixture and of the company/undertaking

1.1. Product identifier

Product form : Substance
:
CAS No : 63-74-1
Product code : 06174
Formula : 200-563-4
Chemical structure :



Synonyms : p-Aminobenzenesulfonamide

1.2. Relevant identified uses of the substance or mixture and uses advised against

1.2.1. Relevant identified uses

Use of the substance/mixture : Laboratory chemicals, Manufacture of substances

1.2.2. Uses advised against

No additional information available

1.3. Details of the supplier of the safety data sheet

LOBA CHEMIE PVT.LTD.
107 Wode House Road, Jehangir Villa, Colaba
400005 Mumbai - INDIA
T +91 22 6663 6663 - F +91 22 6663 6699
info@lobachemie.com - www.lobachemie.com

1.4. Emergency telephone number

Emergency number : + 91 22 6663 6663 (9:00am - 6:00 pm)

SECTION 2: Hazards identification

2.1. Classification of the substance or mixture

Classification according to Regulation (EC) No. 1272/2008 [CLP]

Not classified

Classification according to Directive 67/548/EEC or 1999/45/EC

Not classified

SULPHANILAMIDE EXTRA PURE

Safety Data Sheet

Adverse physicochemical, human health and environmental effects

No additional information available

2.2. Label elements

Labelling according to Regulation (EC) No. 1272/2008 [CLP]

No labelling applicable

2.3. Other hazards

No additional information available

SECTION 3: Composition/information on ingredients

3.1. Substance

Name : SULPHANILAMIDE EXTRA PURE

CAS No : 63-74-1

Full text of R- and H-phrases: see section 16

3.2. Mixture

Not applicable

SECTION 4: First aid measures

4.1. Description of first aid measures

First-aid measures after inhalation : Remove person to fresh air and keep comfortable for breathing. Give oxygen or artificial respiration if necessary. If you feel unwell, seek medical advice.

First-aid measures after skin contact : Gently wash with plenty of soap and water. If skin irritation occurs: Get medical advice/attention.

First-aid measures after eye contact : Remove contact lenses, if present and easy to do. Continue rinsing. Rinse cautiously with water for several minutes. If eye irritation persists: Get medical advice/attention.

First-aid measures after ingestion : Rinse mouth out with water. If you feel unwell, seek medical advice.

4.2. Most important symptoms and effects, both acute and delayed

No additional information available

4.3. Indication of any immediate medical attention and special treatment needed

Treat symptomatically.

SECTION 5: Firefighting measures

5.1. Extinguishing media

Suitable extinguishing media : dry chemical powder, alcohol-resistant foam, carbon dioxide (CO₂).

Unsuitable extinguishing media : Do not use a heavy water stream.

5.2. Special hazards arising from the substance or mixture

No additional information available

SULPHANILAMIDE EXTRA PURE

Safety Data Sheet

5.3. Advice for firefighters

No additional information available

SECTION 6: Accidental release measures

6.1. Personal precautions, protective equipment and emergency procedures

6.1.1. For non-emergency personnel

Emergency procedures : Evacuate unnecessary personnel.

6.1.2. For emergency responders

Protective equipment : Use personal protective equipment as required.

Emergency procedures : Stop release.

6.2. Environmental precautions

Avoid release to the environment.

6.3. Methods and material for containment and cleaning up

Methods for cleaning up : Clear up rapidly by scoop or vacuum.

6.4. Reference to other sections

No additional information available

SECTION 7: Handling and storage

7.1. Precautions for safe handling

Precautions for safe handling : Do not get in eyes, on skin, or on clothing.

Hygiene measures : Wash hands and other exposed areas with mild soap and water before eating, drinking or smoking and when leaving work.

7.2. Conditions for safe storage, including any incompatibilities

Storage conditions : Store in original container. Keep container tightly closed. Store in a dry place. Protect from moisture.

7.3. Specific end use(s)

No additional information available

SECTION 8: Exposure controls/personal protection

8.1. Control parameters

No additional information available

8.2. Exposure controls

Hand protection : protective gloves

Eye protection : Chemical goggles or safety glasses

Skin and body protection : Wear suitable protective clothing

Respiratory protection : Wear respiratory protection

SECTION 9: Physical and chemical properties

9.1. Information on basic physical and chemical properties

Physical state : Solid

SULPHANILAMIDE EXTRA PURE

Safety Data Sheet

Molecular mass	: 172.2 g/mol
Colour	: White powder.
Odour	: odourless.
Odour threshold	: No data available
pH	: 5.8 - 6.1 (0,5% aq,sol,)
Relative evaporation rate (butylacetate=1)	: No data available
Melting point	: 164 - 166
Freezing point	: No data available
Boiling point	: No data available
Flash point	: No data available
Auto-ignition temperature	: No data available
Decomposition temperature	: No data available
Flammability (solid, gas)	: No data available
Vapour pressure	: No data available
Relative vapour density at 20 °C	: No data available
Relative density	: No data available
Density	: 1.08 g/cm ³
Solubility	: Water: 7.5 g/l @ (20°C)
Log Pow	: No data available
Viscosity, kinematic	: No data available
Viscosity, dynamic	: No data available
Explosive properties	: No data available
Oxidising properties	: No data available
Explosive limits	: No data available

9.2. Other information

No additional information available

SECTION 10: Stability and reactivity

10.1. Reactivity

No additional information available

10.2. Chemical stability

Stable under normal conditions.

10.3. Possibility of hazardous reactions

No additional information available

10.4. Conditions to avoid

Direct sunlight. Air contact. Moisture.

SULPHANILAMIDE EXTRA PURE

Safety Data Sheet

10.5. Incompatible materials

No additional information available

10.6. Hazardous decomposition products

No additional information available

SECTION 11: Toxicological information

11.1. Information on toxicological effects

Acute toxicity : Not classified

Skin corrosion/irritation : Not classified
pH: 5.8 - 6.1 (0,5% aq.sol,)

Serious eye damage/irritation : Not classified
pH: 5.8 - 6.1 (0,5% aq.sol,)

Respiratory or skin sensitisation : Not classified

Germ cell mutagenicity : Not classified

Carcinogenicity : Not classified

Reproductive toxicity : Not classified

Specific target organ toxicity (single exposure) : Not classified

Specific target organ toxicity (repeated exposure) : Not classified

Aspiration hazard : Not classified

SECTION 12: Ecological information

12.1. Toxicity

No additional information available

12.2. Persistence and degradability

No additional information available

12.3. Bioaccumulative potential

No additional information available

12.4. Mobility in soil

No additional information available

SULPHANILAMIDE EXTRA PURE

Safety Data Sheet

12.5. Results of PBT and vPvB assessment

No additional information available

12.6. Other adverse effects

No additional information available

SECTION 13: Disposal considerations

13.1. Waste treatment methods

No additional information available

SECTION 14: Transport information

In accordance with ADR / RID / IMDG / IATA / ADN

14.1. UN number

UN-No. (ADR)	: Not applicable
UN-No. (IMDG)	: Not applicable
UN-No.(IATA)	: Not applicable
UN-No.(ADN)	: Not applicable
UN-No. (RID)	: Not applicable

14.2. UN proper shipping name

Proper Shipping Name (ADR)	: Not applicable
Proper Shipping Name (IMDG)	: Not applicable
Proper Shipping Name (IATA)	: Not applicable
Proper Shipping Name (ADN)	: Not applicable
Proper Shipping Name (RID)	: Not applicable

14.3. Transport hazard class(es)

ADR

Transport hazard class(es) (ADR) : Not applicable

IMDG

Transport hazard class(es) (IMDG) : Not applicable

IATA

Transport hazard class(es) (IATA) : Not applicable

ADN

Transport hazard class(es) (ADN) : Not applicable

RID

Transport hazard class(es) (RID) : Not applicable

14.4. Packing group

Packing group (ADR)	: Not applicable
Packing group (IMDG)	: Not applicable
Packing group (IATA)	: Not applicable
Packing group (ADN)	: Not applicable
Packing group (RID)	: Not applicable

SULPHANILAMIDE EXTRA PURE

Safety Data Sheet

14.5. Environmental hazards

Dangerous for the environment : No
Marine pollutant : No
Other information : No supplementary information available

14.6. Special precautions for user

- Overland transport

No data available

- Transport by sea

No data available

- Air transport

No data available

- Inland waterway transport

No data available

- Rail transport

No data available

14.7. Transport in bulk according to Annex II of MARPOL 73/78 and the IBC Code

Not applicable

SECTION 15: Regulatory information

15.1. Safety, health and environmental regulations/legislation specific for the substance or mixture

15.1.1. EU-Regulations

No REACH Annex XVII restrictions

SULPHANILAMIDE EXTRA PURE is not on the REACH Candidate List

SULPHANILAMIDE EXTRA PURE is not on the REACH Annex XIV List

15.1.2. National regulations

Germany

12th Ordinance Implementing the Federal Immission Control Act - 12.BImSchV : Is not subject of the 12. BImSchV (Hazardous Incident Ordinance)

15.2. Chemical safety assessment

No additional information available

SECTION 16: Other information

SULPHANILAMIDE EXTRA PURE

Safety Data Sheet

This information is based on our current knowledge and is intended to describe the product for the purposes of health, safety and environmental requirements only. It should not therefore be construed as guaranteeing any specific property of the product