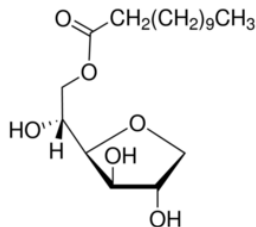


## MATERIAL SAFETY DATA SHEET (MSDS)

## SECTION 1: Identification of the substance/mixture and of the company/undertaking

## 1.1. Product identifier

Product form : Substance  
 :  
 EC no : 215-663-3  
 CAS No : 1338-39-2  
 Product code : 06086  
 Formula : C<sub>18</sub>H<sub>34</sub>O<sub>6</sub>  
 Chemical structure :



Synonyms : Sorbitan monolaurate

## 1.2. Relevant identified uses of the substance or mixture and uses advised against

## 1.2.1. Relevant identified uses

Use of the substance/mixture : Laboratory chemicals, Manufacture of substances

## 1.2.2. Uses advised against

No additional information available

## 1.3. Details of the supplier of the safety data sheet

LOBA CHEMIE PVT.LTD.  
 107 Wode House Road, Jehangir Villa, Colaba  
 400005 Mumbai - INDIA  
 T +91 22 6663 6663 - F +91 22 6663 6699  
[info@lobachemie.com](mailto:info@lobachemie.com) - [www.lobachemie.com](http://www.lobachemie.com)

## 1.4. Emergency telephone number

Emergency number : + 91 22 6663 6663 (9:00am - 6:00 pm)

## SECTION 2: Hazards identification

## 2.1. Classification of the substance or mixture

Classification according to Regulation (EC) No. 1272/2008 [CLP]

Not classified

# SPAN 20 Extra Pure

## Safety Data Sheet

### Classification according to Directive 67/548/EEC or 1999/45/EC

Not classified

### Adverse physicochemical, human health and environmental effects

No additional information available

### 2.2. Label elements

#### Labelling according to Regulation (EC) No. 1272/2008 [CLP]

No labelling applicable

### 2.3. Other hazards

No additional information available

## SECTION 3: Composition/information on ingredients

### 3.1. Substance

|        |                      |
|--------|----------------------|
| Name   | : SPAN 20 Extra Pure |
| CAS No | : 1338-39-2          |
| EC no  | : 215-663-3          |

Full text of R- and H-phrases: see section 16

### 3.2. Mixture

Not applicable

## SECTION 4: First aid measures

### 4.1. Description of first aid measures

|                                       |  |
|---------------------------------------|--|
| First-aid measures after inhalation   | : Remove person to fresh air and keep comfortable for breathing. Give oxygen or artificial respiration if necessary. If you feel unwell, seek medical advice.                    |
| First-aid measures after skin contact | : Gently wash with plenty of soap and water. If skin irritation occurs: Get medical advice/attention.  |
| First-aid measures after eye contact  | : Remove contact lenses, if present and easy to do. Continue rinsing. Rinse cautiously with water for several minutes. If eye irritation persists: Get medical advice/attention. |
| First-aid measures after ingestion    | : Rinse mouth out with water. If you feel unwell, seek medical advice.   |

### 4.2. Most important symptoms and effects, both acute and delayed

No additional information available

### 4.3. Indication of any immediate medical attention and special treatment needed

Treat symptomatically.

## SECTION 5: Firefighting measures

### 5.1. Extinguishing media

Suitable extinguishing media : dry chemical powder, alcohol-resistant foam, carbon dioxide (CO<sub>2</sub>).

# SPAN 20 Extra Pure

## Safety Data Sheet

Unsuitable extinguishing media : Do not use a heavy water stream.

### 5.2. Special hazards arising from the substance or mixture

No additional information available

### 5.3. Advice for firefighters

Protection during firefighting : Do not attempt to take action without suitable protective equipment.

## SECTION 6: Accidental release measures

### 6.1. Personal precautions, protective equipment and emergency procedures

#### 6.1.1. For non-emergency personnel

Emergency procedures : Evacuate unnecessary personnel.

#### 6.1.2. For emergency responders

Protective equipment : Use personal protective equipment as required.

Emergency procedures : Stop release.

### 6.2. Environmental precautions

Avoid release to the environment.

### 6.3. Methods and material for containment and cleaning up

Methods for cleaning up : Collect spillage. On land, sweep or shovel into suitable containers. Soak up spills with inert solids, such as clay or diatomaceous earth as soon as possible.

### 6.4. Reference to other sections

No additional information available

## SECTION 7: Handling and storage

### 7.1. Precautions for safe handling

Precautions for safe handling : Do not get in eyes, on skin, or on clothing.

Hygiene measures : Always wash hands after handling the product.

### 7.2. Conditions for safe storage, including any incompatibilities

Storage conditions : Store in original container. Keep container tightly closed. Store in a dry place. Protect from moisture.

### 7.3. Specific end use(s)

No additional information available

## SECTION 8: Exposure controls/personal protection

### 8.1. Control parameters

No additional information available

# SPAN 20 Extra Pure

## Safety Data Sheet

### 8.2. Exposure controls

|                          |                                      |
|--------------------------|--------------------------------------|
| Hand protection          | : protective gloves                  |
| Eye protection           | : Chemical goggles or safety glasses |
| Skin and body protection | : Wear suitable protective clothing  |
| Respiratory protection   | : Wear respiratory protection        |

## SECTION 9: Physical and chemical properties

### 9.1. Information on basic physical and chemical properties

|  |                       |
|--|-----------------------|
| Physical state                             | : Liquid              |
| Colour                                     | : Clear amber colour. |
| Odour                                      | : No data available   |
| Odour threshold                            | : No data available   |
| pH   | : No data available   |
| Relative evaporation rate (butylacetate=1) | : No data available   |
| Melting point                              | : No data available   |
| Freezing point                             | : No data available   |
| Boiling point                              | : No data available   |
| Flash point                                | : > 113 °C            |
| Auto-ignition temperature                  | : No data available   |
| Decomposition temperature                  | : No data available   |
| Flammability (solid, gas)                  | : No data available   |
| Vapour pressure                            | : No data available   |
| Relative vapour density at 20 °C           | : No data available   |
| Relative density                           | : No data available   |
| Density                                    | : 1 g/cm <sup>3</sup> |
| Solubility                                 | : No data available   |
| Log Pow                                    | : No data available   |
| Viscosity, kinematic                       | : No data available   |
| Viscosity, dynamic                         | : No data available   |
| Explosive properties                       | : No data available   |
| Oxidising properties                       | : No data available   |
| Explosive limits                           | : No data available   |

### 9.2. Other information

No additional information available

## SECTION 10: Stability and reactivity

### 10.1. Reactivity

No additional information available

# SPAN 20 Extra Pure

## Safety Data Sheet

### 10.2. Chemical stability

Stable under normal conditions.

### 10.3. Possibility of hazardous reactions

No additional information available

### 10.4. Conditions to avoid

Direct sunlight.

### 10.5. Incompatible materials

No additional information available

### 10.6. Hazardous decomposition products

No additional information available

## SECTION 11: Toxicological information

### 11.1. Information on toxicological effects

Acute toxicity : Not classified

Skin corrosion/irritation : Not classified

Serious eye damage/irritation : Not classified

Respiratory or skin sensitisation : Not classified

Germ cell mutagenicity : Not classified

Carcinogenicity : Not classified

Reproductive toxicity : Not classified

Specific target organ toxicity (single exposure) : Not classified

Specific target organ toxicity (repeated exposure) : Not classified

Aspiration hazard : Not classified

## SECTION 12: Ecological information

### 12.1. Toxicity

No additional information available

### 12.2. Persistence and degradability

No additional information available

### 12.3. Bioaccumulative potential

No additional information available

# SPAN 20 Extra Pure

## Safety Data Sheet

### 12.4. Mobility in soil

No additional information available

### 12.5. Results of PBT and vPvB assessment

No additional information available

### 12.6. Other adverse effects

No additional information available

## SECTION 13: Disposal considerations

### 13.1. Waste treatment methods

No additional information available

## SECTION 14: Transport information

In accordance with ADR / RID / IMDG / IATA / ADN

### 14.1. UN number

|               |                  |
|---------------|------------------|
| UN-No. (ADR)  | : Not applicable |
| UN-No. (IMDG) | : Not applicable |
| UN-No.(IATA)  | : Not applicable |
| UN-No.(ADN)   | : Not applicable |
| UN-No. (RID)  | : Not applicable |

### 14.2. UN proper shipping name

|                             |                  |
|-----------------------------|------------------|
| Proper Shipping Name (ADR)  | : Not applicable |
| Proper Shipping Name (IMDG) | : Not applicable |
| Proper Shipping Name (IATA) | : Not applicable |
| Proper Shipping Name (ADN)  | : Not applicable |
| Proper Shipping Name (RID)  | : Not applicable |

### 14.3. Transport hazard class(es)

#### ADR

Transport hazard class(es) (ADR) : Not applicable

#### IMDG

Transport hazard class(es) (IMDG) : Not applicable

#### IATA

Transport hazard class(es) (IATA) : Not applicable

#### ADN

Transport hazard class(es) (ADN) : Not applicable

#### RID

Transport hazard class(es) (RID) : Not applicable

### 14.4. Packing group

|                      |                  |
|----------------------|------------------|
| Packing group (ADR)  | : Not applicable |
| Packing group (IMDG) | : Not applicable |
| Packing group (IATA) | : Not applicable |

# SPAN 20 Extra Pure

## Safety Data Sheet

Packing group (ADN) : Not applicable  
Packing group (RID) : Not applicable

### 14.5. Environmental hazards

Dangerous for the environment : No  
Marine pollutant : No  
Other information : No supplementary information available

### 14.6. Special precautions for user

#### - Overland transport

No data available

#### - Transport by sea

No data available

#### - Air transport

No data available

#### - Inland waterway transport

No data available

#### - Rail transport

No data available

### 14.7. Transport in bulk according to Annex II of MARPOL 73/78 and the IBC Code

Not applicable

## SECTION 15: Regulatory information

### 15.1. Safety, health and environmental regulations/legislation specific for the substance or mixture

#### 15.1.1. EU-Regulations

No REACH Annex XVII restrictions

SPAN 20 Extra Pure is not on the REACH Candidate List

SPAN 20 Extra Pure is not on the REACH Annex XIV List

#### 15.1.2. National regulations

##### Germany

AwSV/VwVwS Annex reference : Water hazard class (WGK) 1, slightly hazardous to water (Classification according to VwVwS, Annex 3; WGK No 6097)

12th Ordinance Implementing the Federal Immission Control Act - 12.BImSchV : Is not subject of the 12. BImSchV (Hazardous Incident Ordinance)

### 15.2. Chemical safety assessment

No additional information available

# SPAN 20 Extra Pure

## Safety Data Sheet

---

### SECTION 16: Other information

*This information is based on our current knowledge and is intended to describe the product for the purposes of health, safety and environmental requirements only. It should not therefore be construed as guaranteeing any specific property of the product*