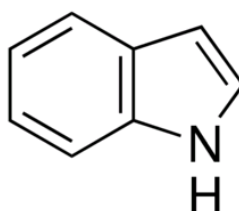


**MATERIAL SAFETY DATA SHEET (MSDS)****SECTION 1: Identification of the substance/mixture and of the company/undertaking****1.1. Product identifier**

Product form : Substance  
:  
EC no : 204-420-7  
CAS No : 120-72-9  
Product code : 04185  
Chemical structure :



Synonyms : 1H-Benzo[b]pyrrole

**1.2. Relevant identified uses of the substance or mixture and uses advised against****1.2.1. Relevant identified uses**

Use of the substance/mixture : Laboratory chemicals, Manufacture of substances

**1.2.2. Uses advised against**

No additional information available

**1.3. Details of the supplier of the safety data sheet**

LOBA CHEMIE PVT.LTD.  
107 Wode House Road, Jehangir Villa, Colaba  
400005 Mumbai - INDIA  
T +91 22 6663 6663 - F +91 22 6663 6699  
[info@lobachemie.com](mailto:info@lobachemie.com) - [www.lobachemie.com](http://www.lobachemie.com)

**1.4. Emergency telephone number**

Emergency number : + 91 22 6663 6663 (9:00am - 6:00 pm)

**SECTION 2: Hazards identification****2.1. Classification of the substance or mixture****Classification according to Regulation (EC) No. 1272/2008 [CLP]**

Serious eye damage/eye irritation, Category 1 H318  
Acute toxicity (dermal), Category 4 H312  
Acute toxicity (oral), Category 4 H302  
Skin corrosion/irritation, Category 2 H315  
Specific target organ H335

# INDOLE AR

## Safety Data Sheet

toxicity — Single exposure, Category 3, Respiratory tract irritation  
Hazardous to the aquatic environment — Acute Hazard, Category 1 H400  
Hazardous to the aquatic environment — Chronic Hazard, Category 1 H410

Full text of classification categories and H statements : see section 16

### Classification according to Directive 67/548/EEC or 1999/45/EC

Xn; R21/22  
Xi; R41  
Xi; R37/38  
N; R50/53

Full text of R-phrases: see section 16

### Adverse physicochemical, human health and environmental effects

No additional information available

## 2.2. Label elements

### Labelling according to Regulation (EC) No. 1272/2008 [CLP]

Hazard pictograms (CLP) :



GHS05

GHS09

GHS06

Signal word (CLP) : Danger

Hazard statements (CLP) : H302+H312 - Harmful if swallowed or in contact with skin  
H315 - Causes skin irritation  
H318 - Causes serious eye damage  
H335 - May cause respiratory irritation  
H410 - Very toxic to aquatic life with long lasting effects

Precautionary statements (CLP) : P261 - Avoid breathing dust/fume/gas/mist/vapours/spray  
P273 - Avoid release to the environment  
P280 - Wear protective gloves/protective clothing/eye protection/face protection  
P305+P351+P338 - IF IN EYES: Rinse cautiously with water for several minutes. Remove contact lenses, if present and easy to do. Continue rinsing  
P312 - Call a POISON CENTER or doctor/physician if you feel unwell

## 2.3. Other hazards

No additional information available

# INDOLE AR

## Safety Data Sheet

### SECTION 3: Composition/information on ingredients

#### 3.1. Substance

Name : INDOLE AR  
CAS No : 120-72-9  
EC no : 204-420-7

Full text of R- and H-phrases: see section 16

#### 3.2. Mixture

Not applicable

### SECTION 4: First aid measures

#### 4.1. Description of first aid measures

First-aid measures after inhalation : Remove victim to fresh air and keep at rest in a position comfortable for breathing. Call a POISON CENTER or doctor/physician if you feel unwell.

First-aid measures after skin contact : Immediately call a POISON CENTER or doctor/physician. Specific measures (see ... on this label). Wash with plenty of soap and water. Wash contaminated clothing before reuse. If skin irritation occurs: Get medical advice/attention. Specific treatment (see ... on this label).

First-aid measures after eye contact : Rinse cautiously with water for several minutes. Remove contact lenses, if present and easy to do. Continue rinsing. Immediately call a POISON CENTER or doctor/physician.

First-aid measures after ingestion : Rinse mouth. Call a POISON CENTER or doctor/physician if you feel unwell.

#### 4.2. Most important symptoms and effects, both acute and delayed

Symptoms/injuries after inhalation : May cause respiratory irritation.

Symptoms/injuries after skin contact : Repeated exposure to this material can result in absorption through skin causing significant health hazard. Harmful in contact with skin. Causes skin irritation.

Symptoms/injuries after eye contact : Causes serious eye damage.

Symptoms/injuries after ingestion : Swallowing a small quantity of this material will result in serious health hazard.

#### 4.3. Indication of any immediate medical attention and special treatment needed

No additional information available

### SECTION 5: Firefighting measures

#### 5.1. Extinguishing media

Suitable extinguishing media : Water spray.

Unsuitable extinguishing media : Do not use a heavy water stream.

#### 5.2. Special hazards arising from the substance or mixture

No additional information available

#### 5.3. Advice for firefighters

No additional information available

### SECTION 6: Accidental release measures

#### 6.1. Personal precautions, protective equipment and emergency procedures

##### 6.1.1. For non-emergency personnel

Emergency procedures : Do not get in eyes, on skin, or on clothing. Do not breathe dust.

##### 6.1.2. For emergency responders

Protective equipment : Use personal protective equipment as required.

# INDOLE AR

## Safety Data Sheet

Emergency procedures : Do not touch spilled material.

### 6.2. Environmental precautions

Avoid release to the environment.

### 6.3. Methods and material for containment and cleaning up

Methods for cleaning up : Clear up rapidly by scoop or vacuum.

### 6.4. Reference to other sections

No additional information available

## SECTION 7: Handling and storage

### 7.1. Precautions for safe handling

Precautions for safe handling : Avoid breathing dust/fume/gas/mist/vapours/spray. Use only outdoors or in a well-ventilated area.

Hygiene measures : Do not eat, drink or smoke when using this product. Wash ... thoroughly after handling.

### 7.2. Conditions for safe storage, including any incompatibilities

Storage conditions : Keep container tightly closed.

### 7.3. Specific end use(s)

No additional information available

## SECTION 8: Exposure controls/personal protection

### 8.1. Control parameters

No additional information available

### 8.2. Exposure controls

Hand protection : protective gloves  
Eye protection : Chemical goggles or safety glasses  
Skin and body protection : Wear suitable protective clothing  
Respiratory protection : Wear appropriate mask

## SECTION 9: Physical and chemical properties

### 9.1. Information on basic physical and chemical properties

Physical state : Solid  
Colour : colorless to light yellow.  
Odour : unpleasant.  
Odour threshold : No data available  
pH : No data available  
Relative evaporation rate (butylacetate=1) : No data available  
Melting point : 52 °C  
Freezing point : No data available

# INDOLE AR

## Safety Data Sheet

Boiling point	: 253 °C
Flash point	: No data available
Auto-ignition temperature	: No data available
Decomposition temperature	: No data available
Flammability (solid, gas)	: No data available
Vapour pressure	: No data available
Relative vapour density at 20 °C	: No data available
Relative density	: No data available
Density	: 1.22 g/cm <sup>3</sup>
Solubility	: Water: Slightly soluble
Log Pow	: No data available
Viscosity, kinematic	: No data available
Viscosity, dynamic	: No data available
Explosive properties	: No data available
Oxidising properties	: No data available
Explosive limits	: No data available

### 9.2. Other information

No additional information available

## SECTION 10: Stability and reactivity

### 10.1. Reactivity

No additional information available

### 10.2. Chemical stability

No additional information available

### 10.3. Possibility of hazardous reactions

No additional information available

### 10.4. Conditions to avoid

Direct sunlight. Air contact. Moisture.

### 10.5. Incompatible materials

No additional information available

### 10.6. Hazardous decomposition products

No additional information available

## SECTION 11: Toxicological information

### 11.1. Information on toxicological effects

Acute toxicity : Dermal: Harmful in contact with skin. Oral: Harmful if swallowed.

Skin corrosion/irritation : Causes skin irritation.

# INDOLE AR

## Safety Data Sheet

Serious eye damage/irritation	: Causes serious eye damage.
Respiratory or skin sensitisation	: Not classified
Germ cell mutagenicity	: Not classified
Carcinogenicity	: Not classified
Reproductive toxicity	: Not classified
Specific target organ toxicity (single exposure)	: May cause respiratory irritation.
Specific target organ toxicity (repeated exposure)	: Not classified
Aspiration hazard	: Not classified
Potential adverse human health effects and symptoms	: Harmful if swallowed. Harmful in contact with skin.

### SECTION 12: Ecological information

#### 12.1. Toxicity

Ecology - water : Very toxic to aquatic life with long lasting effects.

#### 12.2. Persistence and degradability

##### INDOLE AR (120-72-9)

Persistence and degradability	May cause long-term adverse effects in the environment.
-------------------------------	---

#### 12.3. Bioaccumulative potential

No additional information available

#### 12.4. Mobility in soil

No additional information available

#### 12.5. Results of PBT and vPvB assessment

No additional information available

#### 12.6. Other adverse effects

No additional information available

### SECTION 13: Disposal considerations

#### 13.1. Waste treatment methods

Product/Packaging disposal recommendations : Dispose of contents/container to ...

# INDOLE AR

## Safety Data Sheet

### SECTION 14: Transport information

In accordance with ADR / RID / IMDG / IATA / ADN

#### 14.1. UN number

UN-No. (ADR)	: 2811
UN-No. (IMDG)	: 2811
UN-No.(IATA)	: 2811
UN-No.(ADN)	: 2811
UN-No. (RID)	: 2811

#### 14.2. UN proper shipping name

Proper Shipping Name (ADR)	: TOXIC SOLID, ORGANIC, N.O.S.
Proper Shipping Name (IMDG)	: TOXIC SOLID, ORGANIC, N.O.S.
Proper Shipping Name (IATA)	: TOXIC SOLID, ORGANIC, N.O.S.
Proper Shipping Name (ADN)	: TOXIC SOLID, ORGANIC, N.O.S.
Proper Shipping Name (RID)	: TOXIC SOLID, ORGANIC, N.O.S.
Transport document description (ADR)	: UN 2811 TOXIC SOLID, ORGANIC, N.O.S., 6.1, III, (E), ENVIRONMENTALLY HAZARDOUS
Transport document description (IMDG)	: UN 2811 TOXIC SOLID, ORGANIC, N.O.S., 6.1, III, MARINE POLLUTANT/ENVIRONMENTALLY HAZARDOUS
Transport document description (IATA)	: UN 2811 TOXIC SOLID, ORGANIC, N.O.S., 6.1, III, ENVIRONMENTALLY HAZARDOUS
Transport document description (ADN)	: UN 2811 TOXIC SOLID, ORGANIC, N.O.S., 6.1, III, ENVIRONMENTALLY HAZARDOUS
Transport document description (RID)	: UN 2811 TOXIC SOLID, ORGANIC, N.O.S., 6.1, III, ENVIRONMENTALLY HAZARDOUS

#### 14.3. Transport hazard class(es)

##### ADR

Transport hazard class(es) (ADR)	: 6.1
Danger labels (ADR)	: 6.1



##### IMDG

Transport hazard class(es) (IMDG)	: 6.1
Danger labels (IMDG)	: 6.1



##### IATA

Transport hazard class(es) (IATA)	: 6.1
Hazard labels (IATA)	: 6.1

# INDOLE AR

## Safety Data Sheet



### ADN

Transport hazard class(es) (ADN) : 6.1

Danger labels (ADN) : 6.1



### RID

Transport hazard class(es) (RID) : 6.1

Danger labels (RID) : 6.1



#### 14.4. Packing group

Packing group (ADR) : III

Packing group (IMDG) : III

Packing group (IATA) : III

Packing group (ADN) : III

Packing group (RID) : III

#### 14.5. Environmental hazards

Dangerous for the environment : Yes

Marine pollutant : Yes

Other information : No supplementary information available

#### 14.6. Special precautions for user

##### - Overland transport

Classification code (ADR) : T2

Special provision (ADR) : 274, 614

Limited quantities (ADR) : 5kg

Excepted quantities (ADR) : E1

Packing instructions (ADR) : P002, IBC08, LP02, R001

Special packing provisions (ADR) : B3

Mixed packing provisions (ADR) : MP10

Portable tank and bulk container instructions (ADR) : T1

Portable tank and bulk container special provisions (ADR) : TP33

Tank code (ADR) : SGAH, L4BH

Tank special provisions (ADR) : TU15, TE19

Vehicle for tank carriage : AT

Transport category (ADR) : 2



# INDOLE AR

## Safety Data Sheet

---

Special provisions for carriage - Bulk (ADR) : VC1, VC2, AP7

Special provisions for carriage - Loading, unloading and handling (ADR) : CV13, CV28

Special provisions for carriage - Operation (ADR) : S9

Hazard identification number (Kemler No.) : 60

Orange plates :



Tunnel restriction code (ADR) : E

EAC code : 2X

### - Transport by sea

Special provision (IMDG) : 223, 274

Limited quantities (IMDG) : 5 kg

Excepted quantities (IMDG) : E1

Packing instructions (IMDG) : P002

IBC packing instructions (IMDG) : IBC08

IBC special provisions (IMDG) : B3

Tank instructions (IMDG) : T1

Tank special provisions (IMDG) : TP33

EmS-No. (Fire) : F-A

EmS-No. (Spillage) : S-A

Stowage category (IMDG) : A

MFAG-No : 154

### - Air transport

PCA Excepted quantities (IATA) : E1

PCA Limited quantities (IATA) : Y645

PCA limited quantity max net quantity (IATA) : 10kg

PCA packing instructions (IATA) : 670

PCA max net quantity (IATA) : 100kg

CAO packing instructions (IATA) : 677

CAO max net quantity (IATA) : 200kg

Special provision (IATA) : A3, A5

ERG code (IATA) : 6L

### - Inland waterway transport

Classification code (ADN) : T2

Special provisions (ADN) : 274, 614, 802

Limited quantities (ADN) : 5 kg

Excepted quantities (ADN) : E1

Carriage permitted (ADN) : T

Equipment required (ADN) : PP, EP

Number of blue cones/lights (ADN) : 0

### - Rail transport

Classification code (RID) : T2

Special provision (RID) : 274, 614

Limited quantities (RID) : 5kg

Excepted quantities (RID) : E1

Packing instructions (RID) : P002, IBC08, LP02, R001

Special packing provisions (RID) : B3

# INDOLE AR

## Safety Data Sheet

Mixed packing provisions (RID)	: MP10
Portable tank and bulk container instructions (RID)	: T1
Portable tank and bulk container special provisions (RID)	: TP33
Tank codes for RID tanks (RID)	: SGAH, L4BH
Special provisions for RID tanks (RID)	: TU15
Transport category (RID)	: 2
Special provisions for carriage – Bulk (RID)	: VC1, VC2, AP7
Special provisions for carriage – Loading and unloading (RID)	: CW13, CW28, CW31
Colis express (express parcels) (RID)	: CE11
Hazard identification number (RID)	: 60

### 14.7. Transport in bulk according to Annex II of MARPOL 73/78 and the IBC Code

Not applicable

## SECTION 15: Regulatory information

### 15.1. Safety, health and environmental regulations/legislation specific for the substance or mixture

#### 15.1.1. EU-Regulations

No REACH Annex XVII restrictions

INDOLE AR is not on the REACH Candidate List

INDOLE AR is not on the REACH Annex XIV List

#### 15.1.2. National regulations

##### Germany

AwSV/VwVwS Annex reference : Water hazard class (WGK) 1, slightly hazardous to water (Classification according to VwVwS, Annex 3; WGK No 3436)

12th Ordinance Implementing the Federal Immission Control Act - 12.BImSchV : Is not subject of the 12. BImSchV (Hazardous Incident Ordinance)

##### Denmark

Recommendations Danish Regulation : Young people below the age of 18 years are not allowed to use the product  
Pregnant/breastfeeding women working with the product must not be in direct contact with the product

### 15.2. Chemical safety assessment

No additional information available

## SECTION 16: Other information

# INDOLE AR

## Safety Data Sheet

---

Full text of R-, H- and EUH-phrases:

Acute Tox. 4 (Dermal)	Acute toxicity (dermal), Category 4
Acute Tox. 4 (Oral)	Acute toxicity (oral), Category 4
Aquatic Acute 1	Hazardous to the aquatic environment — Acute Hazard, Category 1
Aquatic Chronic 1	Hazardous to the aquatic environment — Chronic Hazard, Category 1
Eye Dam. 1	Serious eye damage/eye irritation, Category 1
Skin Irrit. 2	Skin corrosion/irritation, Category 2
STOT SE 3	Specific target organ toxicity — Single exposure, Category 3, Respiratory tract irritation
H302	Harmful if swallowed
H312	Harmful in contact with skin
H315	Causes skin irritation
H318	Causes serious eye damage
H335	May cause respiratory irritation
H400	Very toxic to aquatic life
H410	Very toxic to aquatic life with long lasting effects
R21/22	Harmful in contact with skin and if swallowed
R37/38	Irritating to respiratory system and skin
R41	Risk of serious damage to eyes
R50/53	Very toxic to aquatic organisms, may cause long-term adverse effects in the aquatic environment
N	Dangerous for the environment
Xi	Irritant
Xn	Harmful

*This information is based on our current knowledge and is intended to describe the product for the purposes of health, safety and environmental requirements only. It should not therefore be construed as guaranteeing any specific property of the product*