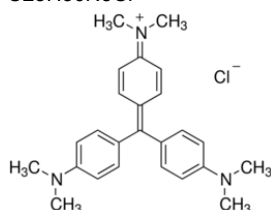


SECTION 1: Identification of the substance/mixture and of the company/undertaking

1.1. Product identifier

Product form	: Substance
Trade name	: CRYSTAL VIOLET AR
EC Index-No.	: 612-204-00-2
EC-No.	: 208-953-6
CAS-No.	: 548-62-9
Product code	: 03049
Type of product	: Biological stain
Formula	: C ₂₅ H ₃₀ N ₃ Cl
Chemical structure	:



Synonyms	: Basic Violet 3, Methyl Violet 10B, Hexamethylpararosaniline chloride, Gentian Violet, Aniline violet
----------	--

1.2. Relevant identified uses of the substance or mixture and uses advised against

1.2.1. Relevant identified uses

Industrial/Professional use spec	: Industrial For professional use only
Use of the substance/mixture	: Laboratory chemicals Biological stain Manufacture of substances

1.2.2. Uses advised against

No additional information available

1.3. Details of the supplier of the safety data sheet

LOBA CHEMIE PVT.LTD.
107 Wode House Road, Jehangir Villa, Colaba
400005 Mumbai
INDIA
T +91 22 6663 6663 - F +91 22 6663 6699
info@lobachemie.com - www.lobachemie.com

1.4. Emergency telephone number

Emergency number	: + 91 22 6663 6663 (9:00am - 6:00 pm)
------------------	--

SECTION 2: Hazards identification

2.1. Classification of the substance or mixture

Classification according to Regulation (EC) No. 1272/2008 [CLP]

Acute toxicity (oral), Category 4	H302
Serious eye damage/eye irritation, Category 1	H318
Carcinogenicity, Category 2	H351
Hazardous to the aquatic environment – Acute Hazard, Category 1	H400
Hazardous to the aquatic environment – Chronic Hazard, Category 1	H410

Full text of H- and EUH-statements: see section 16

CRYSTAL VIOLET AR

Safety Data Sheet

according to the REACH Regulation (EC) 1907/2006 amended by Regulation (EU) 2020/878

Adverse physicochemical, human health and environmental effects

No additional information available

2.2. Label elements

Labelling according to Regulation (EC) No. 1272/2008 [CLP]

Hazard pictograms (CLP)



GHS05

GHS07

GHS08

GHS09

Signal word (CLP)

: Danger

Hazard statements (CLP)

: H302 - Harmful if swallowed.

H318 - Causes serious eye damage.

H351 - Suspected of causing cancer.

H410 - Very toxic to aquatic life with long lasting effects.

Precautionary statements (CLP)

: P273 - Avoid release to the environment.

P280 - Wear protective clothing, eye protection, face protection, protective gloves.

P301+P312 - IF SWALLOWED: Call a POISON CENTRE or doctor if you feel unwell.

P305+P351+P338 - IF IN EYES: Rinse cautiously with water for several minutes. Remove contact lenses, if present and easy to do. Continue rinsing.

P501 - Dispose of contents/container to hazardous or special waste collection point, in accordance with local, regional, national and/or international regulation.

Nordic countries regulation

Denmark

MAL code

: 00-3 (Executive Order No. 301 from 1993)

2.3. Other hazards

This substance/mixture does not meet the PBT criteria of REACH regulation, annex XIII

This substance/mixture does not meet the vPvB criteria of REACH regulation, annex XIII

The substance is not included in the list established in accordance with Article 59(1) of REACH for having endocrine disrupting properties, or is not identified as having endocrine disrupting properties in accordance with the criteria set out in Commission Delegated Regulation (EU) 2017/2100 or Commission Regulation (EU) 2018/605

SECTION 3: Composition/information on ingredients

3.1. Substances

Substance type

: Mono-constituent

Name	Product identifier	%
CRYSTAL VIOLET substance listed as REACH Candidate ([4-[4,4'-bis(dimethylamino) benzhydrylidene]cyclohexa-2,5-dien-1-ylidene]dimethylammonium chloride (C.I. Basic Violet 3))	CAS-No.: 548-62-9 EC-No.: 208-953-6 EC Index-No.: 612-204-00-2	≈ 96

3.2. Mixtures

Not applicable

SECTION 4: First aid measures

4.1. Description of first aid measures

First-aid measures after inhalation

: Remove person to fresh air and keep comfortable for breathing. Call a POISON CENTER/doctor if you feel unwell.

CRYSTAL VIOLET AR

Safety Data Sheet

according to the REACH Regulation (EC) 1907/2006 amended by Regulation (EU) 2020/878

First-aid measures after skin contact	: Wash with plenty of water/.... Wash contaminated clothing before reuse. Get medical advice/attention.
First-aid measures after eye contact	: Rinse cautiously with water for several minutes. Remove contact lenses, if present and easy to do. Continue rinsing. Immediately call a POISON CENTER/doctor.
First-aid measures after ingestion	: Rinse mouth. Call a POISON CENTER/doctor if you feel unwell.

4.2. Most important symptoms and effects, both acute and delayed

Symptoms/effects after inhalation	: May cause respiratory irritation.
Symptoms/effects after skin contact	: Causes skin irritation.
Symptoms/effects after eye contact	: Causes serious eye damage.
Symptoms/effects after ingestion	: Harmful if swallowed.
Chronic symptoms	: Suspected carcinogen.

4.3. Indication of any immediate medical attention and special treatment needed

Treat symptomatically.

SECTION 5: Firefighting measures

5.1. Extinguishing media

Suitable extinguishing media	: Carbon dioxide. Dry powder. Foam. Water spray.
Unsuitable extinguishing media	: Do not use a heavy water stream.

5.2. Special hazards arising from the substance or mixture

No additional information available

5.3. Advice for firefighters

Protection during firefighting	: Do not enter fire area without proper protective equipment, including respiratory protection.
--------------------------------	---

SECTION 6: Accidental release measures

6.1. Personal precautions, protective equipment and emergency procedures

6.1.1. For non-emergency personnel

Emergency procedures	: Evacuate unnecessary personnel.
----------------------	-----------------------------------

6.1.2. For emergency responders

Protective equipment	: Use personal protective equipment as required.
Emergency procedures	: Ventilate area.

6.2. Environmental precautions

Very toxic to aquatic life with long lasting effects.

6.3. Methods and material for containment and cleaning up

Methods for cleaning up	: Soak up spills with inert solids, such as clay or diatomaceous earth as soon as possible. On land, sweep or shovel into suitable containers.
-------------------------	--

6.4. Reference to other sections

No additional information available

SECTION 7: Handling and storage

7.1. Precautions for safe handling

Precautions for safe handling	: Avoid contact with skin and eyes. Use only outdoors or in a well-ventilated area. Do not breathe vapours.
-------------------------------	---

CRYSTAL VIOLET AR

Safety Data Sheet

according to the REACH Regulation (EC) 1907/2006 amended by Regulation (EU) 2020/878

Hygiene measures : Do not eat, drink or smoke when using this product. Wash hands and other exposed areas with mild soap and water before eating, drinking or smoking and when leaving work.

7.2. Conditions for safe storage, including any incompatibilities

Storage conditions : Keep container tightly closed. Store in a well-ventilated place.

7.3. Specific end use(s)

No additional information available

SECTION 8: Exposure controls/personal protection

8.1. Control parameters

8.1.1 National occupational exposure and biological limit values

No additional information available

8.1.2. Recommended monitoring procedures

No additional information available

8.1.3. Air contaminants formed

No additional information available

8.1.4. DNEL and PNEC

No additional information available

8.1.5. Control banding

No additional information available

8.2. Exposure controls

8.2.1. Appropriate engineering controls

No additional information available

8.2.2. Personal protection equipment

Personal protective equipment symbol(s):



8.2.2.1. Eye and face protection

Eye protection:

Chemical goggles or safety glasses

8.2.2.2. Skin protection

Skin and body protection:

Wear a mask

Hand protection:

Protective gloves

8.2.2.3. Respiratory protection

Respiratory protection:

Wear appropriate mask

8.2.2.4. Thermal hazards

No additional information available

8.2.3. Environmental exposure controls

No additional information available

CRYSTAL VIOLET AR

Safety Data Sheet

according to the REACH Regulation (EC) 1907/2006 amended by Regulation (EU) 2020/878

SECTION 9: Physical and chemical properties

9.1. Information on basic physical and chemical properties

Physical state	: Solid
Colour	: Dark green.
Appearance	: Powder.
Molecular mass	: 407.99 g/mol
Odour	: slight characteristic odor.
Odour threshold	: Not available
Melting point	: 205 °C
Freezing point	: Not available
Boiling point	: Not available
Flammability	: Not available
Lower explosion limit	: Not applicable
Upper explosion limit	: Not applicable
Flash point	: Not applicable
Auto-ignition temperature	: > 190 °C
Decomposition temperature	: Not available
pH	: 2.5 – 3.5 at 20°C
pH solution concentration	: 1 %
Viscosity, kinematic	: Not applicable
Solubility	: Water: 10 g/l at 20°C - Soluble in water
Partition coefficient n-octanol/water (Log Kow)	: Not available
Vapour pressure	: Not available
Vapour pressure at 50°C	: Not available
Density	: 1.19 g/cm ³ at 20°C
Relative density	: Not available
Relative vapour density at 20°C	: Not applicable
Particle size	: Not available

9.2. Other information

9.2.1. Information with regard to physical hazard classes

No additional information available

9.2.2. Other safety characteristics

No additional information available

SECTION 10: Stability and reactivity

10.1. Reactivity

No additional information available

10.2. Chemical stability

Stable under normal conditions.

10.3. Possibility of hazardous reactions

No additional information available

10.4. Conditions to avoid

Air contact. Direct sunlight. Moisture.

10.5. Incompatible materials

No additional information available

10.6. Hazardous decomposition products

No additional information available

CRYSTAL VIOLET AR

Safety Data Sheet

according to the REACH Regulation (EC) 1907/2006 amended by Regulation (EU) 2020/878

SECTION 11: Toxicological information

11.1. Information on hazard classes as defined in Regulation (EC) No 1272/2008

Acute toxicity (oral)	: Harmful if swallowed.
Acute toxicity (dermal)	: Not classified
Acute toxicity (inhalation)	: Not classified
Skin corrosion/irritation	: Not classified pH: 2.5 – 3.5 at 20°C
Serious eye damage/irritation	: Causes serious eye damage. pH: 2.5 – 3.5 at 20°C
Respiratory or skin sensitisation	: Not classified
Germ cell mutagenicity	: Not classified
Carcinogenicity	: Suspected of causing cancer.
Reproductive toxicity	: Not classified
STOT-single exposure	: Not classified
STOT-repeated exposure	: Not classified
Aspiration hazard	: Not classified

11.2. Information on other hazards

11.2.1. Endocrine disrupting properties

No additional information available

11.2.2. Other information

Potential adverse human health effects and symptoms : Harmful if swallowed.

SECTION 12: Ecological information

12.1. Toxicity

Ecology - water	: May cause long lasting harmful effects to aquatic life.
Hazardous to the aquatic environment, short-term (acute)	: Very toxic to aquatic life.
Hazardous to the aquatic environment, long-term (chronic)	: Very toxic to aquatic life with long lasting effects.

12.2. Persistence and degradability

CRYSTAL VIOLET AR (548-62-9)

Persistence and degradability	May cause long-term adverse effects in the environment.
-------------------------------	---

12.3. Bioaccumulative potential

No additional information available

12.4. Mobility in soil

No additional information available

12.5. Results of PBT and vPvB assessment

CRYSTAL VIOLET AR (548-62-9)

This substance/mixture does not meet the PBT criteria of REACH regulation, annex XIII

This substance/mixture does not meet the vPvB criteria of REACH regulation, annex XIII

12.6. Endocrine disrupting properties

No additional information available

CRYSTAL VIOLET AR

Safety Data Sheet

according to the REACH Regulation (EC) 1907/2006 amended by Regulation (EU) 2020/878

12.7. Other adverse effects

No additional information available

SECTION 13: Disposal considerations

13.1. Waste treatment methods

Product/Packaging disposal recommendations : Dispose of contents/container to hazardous or special waste collection point, in accordance with local, regional, national and/or international regulation.

SECTION 14: Transport information

In accordance with ADR / IMDG / IATA / ADN / RID

14.1. UN number or ID number

UN-No. (ADR) : UN 3077
UN-No. (IMDG) : UN 3077
UN-No. (IATA) : UN 3077
UN-No. (ADN) : UN 3077
UN-No. (RID) : UN 3077

14.2. UN proper shipping name

Proper Shipping Name (ADR) : ENVIRONMENTALLY HAZARDOUS SUBSTANCE, SOLID, N.O.S.
Proper Shipping Name (IMDG) : ENVIRONMENTALLY HAZARDOUS SUBSTANCE, SOLID, N.O.S.
Proper Shipping Name (IATA) : Environmentally hazardous substance, solid, n.o.s.
Proper Shipping Name (ADN) : ENVIRONMENTALLY HAZARDOUS SUBSTANCE, SOLID, N.O.S.
Proper Shipping Name (RID) : ENVIRONMENTALLY HAZARDOUS SUBSTANCE, SOLID, N.O.S.
Transport document description (ADR) : UN 3077 ENVIRONMENTALLY HAZARDOUS SUBSTANCE, SOLID, N.O.S. (CRYSTAL VIOLET), 9, III, (-)
Transport document description (IMDG) : UN 3077 ENVIRONMENTALLY HAZARDOUS SUBSTANCE, SOLID, N.O.S. (CRYSTAL VIOLET), 9, III, MARINE POLLUTANT
Transport document description (IATA) : UN 3077 Environmentally hazardous substance, solid, n.o.s. (CRYSTAL VIOLET), 9, III
Transport document description (ADN) : UN 3077 ENVIRONMENTALLY HAZARDOUS SUBSTANCE, SOLID, N.O.S., 9, III
Transport document description (RID) : UN 3077 ENVIRONMENTALLY HAZARDOUS SUBSTANCE, SOLID, N.O.S., 9, III

14.3. Transport hazard class(es)

ADR

Transport hazard class(es) (ADR) : 9
Danger labels (ADR) : 9



IMDG

Transport hazard class(es) (IMDG) : 9
Danger labels (IMDG) : 9



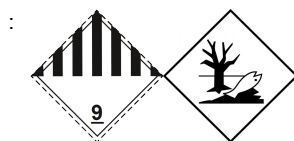
IATA

Transport hazard class(es) (IATA) : 9
Danger labels (IATA) : 9

CRYSTAL VIOLET AR

Safety Data Sheet

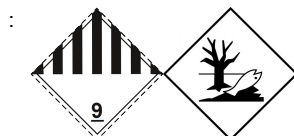
according to the REACH Regulation (EC) 1907/2006 amended by Regulation (EU) 2020/878



ADN

Transport hazard class(es) (ADN) : 9

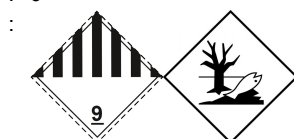
Danger labels (ADN) : 9



RID

Transport hazard class(es) (RID) : 9

Danger labels (RID) : 9



14.4. Packing group

Packing group (ADR) : III

Packing group (IMDG) : III

Packing group (IATA) : III

Packing group (ADN) : III

Packing group (RID) : III

14.5. Environmental hazards

Dangerous for the environment : Yes

Marine pollutant : Yes

Other information : No supplementary information available

14.6. Special precautions for user

Overland transport

Classification code (ADR) : M7

Special provisions (ADR) : 274, 335, 375, 601

Limited quantities (ADR) : 5kg

Excepted quantities (ADR) : E1

Packing instructions (ADR) : P002, IBC08, LP02, R001

Special packing provisions (ADR) : PP12, B3

Mixed packing provisions (ADR) : MP10

Portable tank and bulk container instructions (ADR) : T1, BK1, BK2, BK3

Portable tank and bulk container special provisions (ADR) : TP33

Tank code (ADR) : SGAV, LGBV

Vehicle for tank carriage : AT



Transport category (ADR) : 3

Special provisions for carriage - Packages (ADR) : V13

Special provisions for carriage - Bulk (ADR) : VC1, VC2

Special provisions for carriage - Loading, unloading and handling (ADR) : CV13

Hazard identification number (Kemler No.) : 90

Orange plates : 


Tunnel restriction code (ADR) : -

EAC code : 2Z

CRYSTAL VIOLET AR

Safety Data Sheet

according to the REACH Regulation (EC) 1907/2006 amended by Regulation (EU) 2020/878

Transport by sea

Special provisions (IMDG)	: 274, 335, 966, 967, 969
Limited quantities (IMDG)	: 5 kg
Excepted quantities (IMDG)	: E1
Packing instructions (IMDG)	: LP02, P002
Special packing provisions (IMDG)	: PP12
IBC packing instructions (IMDG)	: IBC08
IBC special provisions (IMDG)	: B3
Tank instructions (IMDG)	: BK1, BK2, BK3, T1
Tank special provisions (IMDG)	: TP33
EmS-No. (Fire)	: F-A
EmS-No. (Spillage)	: S-F
Stowage category (IMDG)	: A
Stowage and handling (IMDG)	: SW23
MFAG-No	: 171

Air transport

PCA Excepted quantities (IATA)	: E1
PCA Limited quantities (IATA)	: Y956
PCA limited quantity max net quantity (IATA)	: 30kgG
PCA packing instructions (IATA)	: 956
PCA max net quantity (IATA)	: 400kg
CAO packing instructions (IATA)	: 956
CAO max net quantity (IATA)	: 400kg
Special provisions (IATA)	: A97, A158, A179, A197, A215
ERG code (IATA)	: 9L

Inland waterway transport

Classification code (ADN)	: M7
Special provisions (ADN)	: 274, 335, 375, 601
Limited quantities (ADN)	: 5 kg
Excepted quantities (ADN)	: E1
Carriage permitted (ADN)	: T* B**
Equipment required (ADN)	: PP, A
Number of blue cones/lights (ADN)	: 0
Additional requirements/Remarks (ADN)	: * Only in the molten state. ** For carriage in bulk see also 7.1.4.1. *** Only in the case of transport in bulk.

Rail transport

Classification code (RID)	: M7
Special provisions (RID)	: 274, 335, 375, 601
Limited quantities (RID)	: 5kg
Excepted quantities (RID)	: E1
Packing instructions (RID)	: P002, IBC08, LP02, R001
Special packing provisions (RID)	: PP12, B3
Mixed packing provisions (RID)	: MP10
Portable tank and bulk container instructions (RID)	: T1, BK1, BK2, BK3
Portable tank and bulk container special provisions (RID)	: TP33
Tank codes for RID tanks (RID)	: SGAV, LGBV
Transport category (RID)	: 3
Special provisions for carriage – Packages (RID)	: W13
Special provisions for carriage – Bulk (RID)	: VC1, VC2
Special provisions for carriage - Loading, unloading and handling (RID)	: CW13, CW31
Colis express (express parcels) (RID)	: CE11
Hazard identification number (RID)	: 90

14.7. Maritime transport in bulk according to IMO instruments

Not applicable

CRYSTAL VIOLET AR

Safety Data Sheet

according to the REACH Regulation (EC) 1907/2006 amended by Regulation (EU) 2020/878

SECTION 15: Regulatory information

15.1. Safety, health and environmental regulations/legislation specific for the substance or mixture

15.1.1. EU-Regulations

REACH Annex XVII (Restriction List)

EU restriction list (REACH Annex XVII)	
Reference code	Applicable on
72.	CRYSTAL VIOLET AR

REACH Annex XIV (Authorisation List)

Not listed on REACH Annex XIV (Authorisation List)

REACH Candidate List (SVHC)

Listed on the REACH Candidate List: [4-[4,4'-bis(dimethylamino) benzhydrylidene]cyclohexa-2,5-dien-1-ylidene]dimethylammonium chloride (C.I. Basic Violet 3)

PIC Regulation (Prior Informed Consent)

Not listed on the PIC list (Regulation EU 649/2012)

POP Regulation (Persistent Organic Pollutants)

Not listed on the POP list (Regulation EU 2019/1021)

Ozone Regulation (1005/2009)

Not listed on the Ozone Depletion list (Regulation EU 1005/2009)

Explosives Precursors Regulation (2019/1148)

Contains no substance(s) listed on the Explosives Precursors list (Regulation EU 2019/1148 on the marketing and use of explosives precursors)

Drug Precursors Regulation (273/2004)

Contains no substance(s) listed on the Drug Precursors list (Regulation EC 273/2004 on the manufacture and the placing on market of certain substances used in the illicit manufacture of narcotic drugs and psychotropic substances)

15.1.2. National regulations

Germany

Water hazard class (WGK) : WGK 3, Highly hazardous to water (Classification according to AwSV; ID No. 8394).
Hazardous Incident Ordinance (12. BImSchV) : Is not subject of the Hazardous Incident Ordinance (12. BImSchV)

Netherlands

SZW-lijst van kankerverwekkende stoffen : CRYSTAL VIOLET is listed
SZW-lijst van mutagene stoffen : The substance is not listed
SZW-lijst van reprotoxische stoffen – Borstvoeding : The substance is not listed
SZW-lijst van reprotoxische stoffen – Vruchtbaarheid : The substance is not listed
SZW-lijst van reprotoxische stoffen – Ontwikkeling : The substance is not listed

Denmark

MAL code : 00-3 (Executive Order No. 301 from 1993)
Danish National Regulations : Young people below the age of 18 years are not allowed to use the product
Pregnant/breastfeeding women working with the product must not be in direct contact with the product

15.2. Chemical safety assessment

No additional information available

CRYSTAL VIOLET AR

Safety Data Sheet

according to the REACH Regulation (EC) 1907/2006 amended by Regulation (EU) 2020/878

SECTION 16: Other information

Full text of H- and EUH-statements:

Acute Tox. 4 (Oral)	Acute toxicity (oral), Category 4
Aquatic Acute 1	Hazardous to the aquatic environment – Acute Hazard, Category 1
Aquatic Chronic 1	Hazardous to the aquatic environment – Chronic Hazard, Category 1
Carc. 2	Carcinogenicity, Category 2
Eye Dam. 1	Serious eye damage/eye irritation, Category 1
H302	Harmful if swallowed.
H318	Causes serious eye damage.
H351	Suspected of causing cancer.
H400	Very toxic to aquatic life.
H410	Very toxic to aquatic life with long lasting effects.

Safety Data Sheet (SDS), EU

This information is based on our current knowledge and is intended to describe the product for the purposes of health, safety and environmental requirements only. It should not therefore be construed as guaranteeing any specific property of the product.