

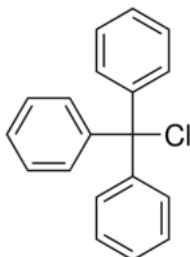
CAS-No.: 76-83-5 MSDS

MATERIAL SAFETY DATA SHEET (MSDS)

SECTION 1: Identification of the substance/mixture and of the company/undertaking

1.1. Product identifier

Product form : Substance
:
CAS-No. : 76-83-5
Product code : 02776
Chemical structure :



1.2. Relevant identified uses of the substance or mixture and uses advised against

1.2.1. Relevant identified uses

Industrial/Professional use spec : Industrial
For professional use only

1.2.2. Uses advised against

No additional information available

1.3. Details of the supplier of the safety data sheet

LOBA CHEMIE PVT.LTD.
107 Wode House Road, Jehangir Villa, Colaba
400005 Mumbai - INDIA
T +91 22 6663 6663 - F +91 22 6663 6699
info@lobachemie.com - www.lobachemie.com

1.4. Emergency telephone number

Emergency number : + 91 22 6663 6663 (9:00am - 6:00 pm)

SECTION 2: Hazards identification

2.1. Classification of the substance or mixture

Classification according to Regulation (EC) No. 1272/2008 [CLP]

Skin corrosion/irritation, H314
Category 1B

Full text of H statements : see section 16

CHLOROTRIPHENYL METHANE FOR SYNTHESIS

Safety Data Sheet

Classification according to Directive 67/548/EEC [DSD] or 1999/45/EC [DPD]

C; R34

Full text of R-phrases: see section 16

Adverse physicochemical, human health and environmental effects

No additional information available

2.2. Label elements

Labelling according to Regulation (EC) No. 1272/2008 [CLP]

Hazard pictograms (CLP) :



GHS05

Signal word (CLP) :

Danger

Hazard statements (CLP) :

H314 - Causes severe skin burns and eye damage.

Precautionary statements (CLP) :

P280 - Wear protective gloves, protective clothing, eye protection, face protection.
P305+P351+P338 - IF IN EYES: Rinse cautiously with water for several minutes. Remove contact lenses, if present and easy to do. Continue rinsing.
P310 - Immediately call a doctor.

2.3. Other hazards

No additional information available

SECTION 3: Composition/information on ingredients

3.1. Substances

Name : CHLOROTRIPHENYL METHANE FOR SYNTHESIS

CAS-No. : 76-83-5

Full text of R- and H-statements: see section 16

3.2. Mixtures

Not applicable

SECTION 4: First aid measures

4.1. Description of first aid measures

First-aid measures after inhalation : Remove person to fresh air and keep comfortable for breathing. Immediately call a POISON CENTER/doctor.

First-aid measures after skin contact : Take off immediately all contaminated clothing. Wash with plenty of water/.... Immediately call a POISON CENTER/doctor.

First-aid measures after eye contact : Rinse cautiously with water for several minutes. Remove contact lenses, if present and easy to do. Continue rinsing. Immediately call a POISON CENTER/doctor.

First-aid measures after ingestion : Rinse mouth. Do NOT induce vomiting. Immediately call a POISON CENTER/doctor.

CHLOROTRIPHENYL METHANE FOR SYNTHESIS

Safety Data Sheet

4.2. Most important symptoms and effects, both acute and delayed

Symptoms/effects : Causes severe skin burns and eye damage.

4.3. Indication of any immediate medical attention and special treatment needed

Treat symptomatically.

SECTION 5: Firefighting measures

5.1. Extinguishing media

Suitable extinguishing media : Carbon dioxide. Dry powder. Foam. Water spray.

Unsuitable extinguishing media : Do not use a heavy water stream.

5.2. Special hazards arising from the substance or mixture

No additional information available

5.3. Advice for firefighters

Protection during firefighting : Do not enter fire area without proper protective equipment, including respiratory protection.

SECTION 6: Accidental release measures

6.1. Personal precautions, protective equipment and emergency procedures

6.1.1. For non-emergency personnel

Emergency procedures : Evacuate unnecessary personnel.

6.1.2. For emergency responders

Protective equipment : Use personal protective equipment as required.

Emergency procedures : Ventilate area.

6.2. Environmental precautions

Avoid release to the environment.

6.3. Methods and material for containment and cleaning up

Methods for cleaning up : Soak up spills with inert solids, such as clay or diatomaceous earth as soon as possible. On land, sweep or shovel into suitable containers.

6.4. Reference to other sections

No additional information available

SECTION 7: Handling and storage

7.1. Precautions for safe handling

Precautions for safe handling : Avoid contact with skin and eyes. Do not breathe vapours. Provide good ventilation in process area to prevent formation of vapour.

Hygiene measures : Wash contaminated clothing before reuse. Wash hands and other exposed areas with mild soap and water before eating, drinking or smoking and when leaving work.

7.2. Conditions for safe storage, including any incompatibilities

Technical measures : Comply with applicable regulations.

Storage conditions : Store in a well-ventilated place. Keep container tightly closed.

7.3. Specific end use(s)

No additional information available

SECTION 8: Exposure controls/personal protection

8.1. Control parameters

No additional information available

CHLOROTRIPHENYL METHANE FOR SYNTHESIS

Safety Data Sheet

8.2. Exposure controls

Hand protection	: Protective gloves
Eye protection	: Chemical goggles or face shield
Skin and body protection	: Wear suitable protective clothing
Respiratory protection	: [In case of inadequate ventilation] wear respiratory protection.

SECTION 9: Physical and chemical properties

9.1. Information on basic physical and chemical properties

Physical state	: Solid
Molecular mass	: 278.78 g/mol
Colour	: White to yellow.
Odour	: No data available
Odour threshold	: No data available
pH	: No data available
Relative evaporation rate (butylacetate=1)	: No data available
Melting point	: 109 °C
Freezing point	: No data available
Boiling point	: 230 - 235 °C
Flash point	: No data available
Auto-ignition temperature	: No data available
Decomposition temperature	: No data available
Flammability (solid, gas)	: No data available
Vapour pressure	: No data available
Relative vapour density at 20 °C	: No data available
Relative density	: No data available
Solubility	: No data available
Log Pow	: No data available
Viscosity, kinematic	: No data available
Viscosity, dynamic	: No data available
Explosive properties	: No data available
Oxidising properties	: No data available
Explosive limits	: No data available

9.2. Other information

No additional information available

CHLOROTRIPHENYL METHANE FOR SYNTHESIS

Safety Data Sheet

SECTION 10: Stability and reactivity

10.1. Reactivity

No additional information available

10.2. Chemical stability

Stable under normal conditions.

10.3. Possibility of hazardous reactions

No additional information available

10.4. Conditions to avoid

Air contact. Direct sunlight. Moisture.

10.5. Incompatible materials

No additional information available

10.6. Hazardous decomposition products

Thermal decomposition generates : Corrosive vapours.

SECTION 11: Toxicological information

11.1. Information on toxicological effects

Acute toxicity : Not classified

Skin corrosion/irritation : Causes severe skin burns and eye damage.

Serious eye damage/irritation : Serious eye damage, category 1, implicit

Respiratory or skin sensitisation : Not classified

Germ cell mutagenicity : Not classified

Carcinogenicity : Not classified

Reproductive toxicity : Not classified

STOT-single exposure : Not classified

STOT-repeated exposure : Not classified

Aspiration hazard : Not classified

SECTION 12: Ecological information

12.1. Toxicity

No additional information available

12.2. Persistence and degradability

No additional information available

CHLOROTRIPHENYL METHANE FOR SYNTHESIS

Safety Data Sheet

12.3. Bioaccumulative potential

No additional information available

12.4. Mobility in soil

No additional information available

12.5. Results of PBT and vPvB assessment

No additional information available

12.6. Other adverse effects

No additional information available

SECTION 13: Disposal considerations

13.1. Waste treatment methods

Product/Packaging disposal recommendations : Dispose of contents/container to hazardous or special waste collection point, in accordance with local, regional, national and/or international regulation.

SECTION 14: Transport information

In accordance with ADR / RID / IMDG / IATA / ADN

14.1. UN number

UN-No. (ADR)	: 3261
UN-No. (IMDG)	: 3261
UN-No. (IATA)	: 3261
UN-No. (ADN)	: 3261
UN-No. (RID)	: 3261

14.2. UN proper shipping name

Proper Shipping Name (ADR)	: CORROSIVE SOLID, ACIDIC, ORGANIC, N.O.S.
Proper Shipping Name (IMDG)	: CORROSIVE SOLID, ACIDIC, ORGANIC, N.O.S.
Proper Shipping Name (IATA)	: Corrosive solid, acidic, organic, n.o.s.
Proper Shipping Name (ADN)	: CORROSIVE SOLID, ACIDIC, ORGANIC, N.O.S.
Proper Shipping Name (RID)	: CORROSIVE SOLID, ACIDIC, ORGANIC, N.O.S.
Transport document description (ADR)	: UN 3261 CORROSIVE SOLID, ACIDIC, ORGANIC, N.O.S., 8, II, (E)
Transport document description (IMDG)	: UN 3261 CORROSIVE SOLID, ACIDIC, ORGANIC, N.O.S., 8, II
Transport document description (IATA)	: UN 3261 Corrosive solid, acidic, organic, n.o.s., 8, II
Transport document description (ADN)	: UN 3261 CORROSIVE SOLID, ACIDIC, ORGANIC, N.O.S., 8, II
Transport document description (RID)	: UN 3261 CORROSIVE SOLID, ACIDIC, ORGANIC, N.O.S., 8, II

14.3. Transport hazard class(es)

ADR

Transport hazard class(es) (ADR)	: 8
Danger labels (ADR)	: 8



IMDG

CHLOROTRIPHENYL METHANE FOR SYNTHESIS

Safety Data Sheet

Transport hazard class(es) (IMDG) : 8
Danger labels (IMDG) : 8



IATA

Transport hazard class(es) (IATA) : 8
Hazard labels (IATA) : 8



ADN

Transport hazard class(es) (ADN) : 8
Danger labels (ADN) : 8



RID

Transport hazard class(es) (RID) : 8
Danger labels (RID) : 8



14.4. Packing group

Packing group (ADR) : II
Packing group (IMDG) : II
Packing group (IATA) : II
Packing group (ADN) : II
Packing group (RID) : II

14.5. Environmental hazards

Dangerous for the environment : No
Marine pollutant : No
Other information : No supplementary information available

14.6. Special precautions for user

- Overland transport

Classification code (ADR) : C4
Special provisions (ADR) : 274
Limited quantities (ADR) : 1kg

CHLOROTRIPHENYL METHANE FOR SYNTHESIS

Safety Data Sheet

Excepted quantities (ADR)	: E2
Packing instructions (ADR)	: P002, IBC08
Special packing provisions (ADR)	: B4
Mixed packing provisions (ADR)	: MP10
Portable tank and bulk container instructions (ADR)	: T3
Portable tank and bulk container special provisions (ADR)	: TP33
Tank code (ADR)	: SGAN, L4BN
Vehicle for tank carriage	: AT
Transport category (ADR)	: 2
Special provisions for carriage - Packages (ADR)	: V11
Hazard identification number (Kemler No.)	: 80
Orange plates	:



Tunnel restriction code (ADR)	: E
EAC code	: 2X

- Transport by sea

Special provisions (IMDG)	: 274
Packing instructions (IMDG)	: P002
IBC packing instructions (IMDG)	: IBC08
IBC special provisions (IMDG)	: B21, B4
Tank instructions (IMDG)	: T3
Tank special provisions (IMDG)	: TP33
EmS-No. (Fire)	: F-A
EmS-No. (Spillage)	: S-B
Stowage category (IMDG)	: B
Properties and observations (IMDG)	: Causes burns to skin, eyes and mucous membranes.
MFAG-No	: 154

- Air transport

PCA Excepted quantities (IATA)	: E2
PCA Limited quantities (IATA)	: Y844
PCA limited quantity max net quantity (IATA)	: 5kg
PCA packing instructions (IATA)	: 859
PCA max net quantity (IATA)	: 15kg
CAO packing instructions (IATA)	: 863
CAO max net quantity (IATA)	: 50kg
Special provisions (IATA)	: A3, A803
ERG code (IATA)	: 8L

- Inland waterway transport

Classification code (ADN)	: C4
Special provisions (ADN)	: 274
Limited quantities (ADN)	: 1 kg
Excepted quantities (ADN)	: E2
Equipment required (ADN)	: PP, EP
Number of blue cones/lights (ADN)	: 0

- Rail transport

Classification code (RID)	: C4
---------------------------	------

CHLOROTRIPHENYL METHANE FOR SYNTHESIS

Safety Data Sheet

Special provisions (RID)	: 274
Excepted quantities (RID)	: E2
Packing instructions (RID)	: P002, IBC08
Special packing provisions (RID)	: B4
Mixed packing provisions (RID)	: MP10
Portable tank and bulk container instructions (RID)	: T3
Portable tank and bulk container special provisions (RID)	: TP33
Tank codes for RID tanks (RID)	: SGAN, L4BN
Transport category (RID)	: 2
Special provisions for carriage – Packages (RID)	: W11
Colis express (express parcels) (RID)	: CE10
Hazard identification number (RID)	: 80

14.7. Transport in bulk according to Annex II of MARPOL 73/78 and the IBC Code

Not applicable

SECTION 15: Regulatory information

15.1. Safety, health and environmental regulations/legislation specific for the substance or mixture

15.1.1. EU-Regulations

No REACH Annex XVII restrictions

CHLOROTRIPHENYL METHANE FOR SYNTHESIS is not on the REACH Candidate List

CHLOROTRIPHENYL METHANE FOR SYNTHESIS is not on the REACH Annex XIV List

15.1.2. National regulations

Germany

12th Ordinance Implementing the Federal Immission Control Act - 12.BImSchV : Is not subject of the 12. BImSchV (Hazardous Incident Ordinance)

Netherlands

SZW-lijst van kankerverwekkende stoffen : The substance is not listed

SZW-lijst van mutagene stoffen : The substance is not listed

NIET-limitatieve lijst van voor de voortplanting giftige stoffen – Borstvoeding : The substance is not listed

NIET-limitatieve lijst van voor de voortplanting giftige stoffen – Vruchtbaarheid : The substance is not listed

NIET-limitatieve lijst van voor de voortplanting giftige stoffen – Ontwikkeling : The substance is not listed

Denmark

Recommendations Danish Regulation : Young people below the age of 18 years are not allowed to use the product

CHLOROTRIPHENYL METHANE FOR SYNTHESIS

Safety Data Sheet

15.2. Chemical safety assessment

No additional information available

SECTION 16: Other information

Full text of R-, H- and EUH-statements:

Skin Corr. 1B	Skin corrosion/irritation, Category 1B
H314	Causes severe skin burns and eye damage.
R34	Causes burns
C	Corrosive

This information is based on our current knowledge and is intended to describe the product for the purposes of health, safety and environmental requirements only. It should not therefore be construed as guaranteeing any specific property of the product