

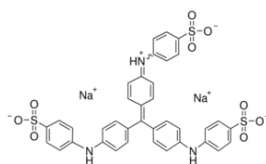
CAS-No.: 28983-56-4 MSDS

MATERIAL SAFETY DATA SHEET (MSDS)

SECTION 1: Identification of the substance/mixture and of the company/undertaking

1.1. Product identifier

Product form : Substance
:
CAS-No. : 28983-56-4
Product code : 01380
Chemical structure :



Synonyms : Methyl Blue

1.2. Relevant identified uses of the substance or mixture and uses advised against

1.2.1. Relevant identified uses

Use of the substance/mixture : Laboratory chemicals, Manufacture of substances

1.2.2. Uses advised against

No additional information available

1.3. Details of the supplier of the safety data sheet

LOBA CHEMIE PVT.LTD.
107 Wode House Road, Jehangir Villa, Colaba
400005 Mumbai - INDIA
T +91 22 6663 6663 - F +91 22 6663 6699
info@lobachemie.com - www.lobachemie.com

1.4. Emergency telephone number

Emergency number : + 91 22 6663 6663 (9:00am - 6:00 pm)

SECTION 2: Hazards identification

2.1. Classification of the substance or mixture

Classification according to Regulation (EC) No. 1272/2008 [CLP]

Acute toxicity (oral), Category 4 H302
Skin corrosion/irritation, Category 2 H315
Serious eye damage/eye irritation, Category 2 H319
Specific target organ toxicity — Single exposure, Category 3, Respiratory tract irritation H335

Full text of hazard classes and H-statements : see section 16

ANILINE BLUE (Water Soluble)

Safety Data Sheet

according to Regulation (EC) No. 1907/2006 (REACH) with its amendment Regulation (EU) 2015/830

Classification according to Directive 67/548/EEC [DSD] or 1999/45/EC [DPD]

Xi; R36/37/38

Full text of R-phrases: see section 16

Adverse physicochemical, human health and environmental effects

No additional information available

2.2. Label elements

Labelling according to Regulation (EC) No. 1272/2008 [CLP]

Hazard pictograms (CLP) :



GHS07

Signal word (CLP) :

Warning

Hazard statements (CLP) :

H302 - Harmful if swallowed.
H315 - Causes skin irritation.
H319 - Causes serious eye irritation.
H335 - May cause respiratory irritation.

Precautionary statements (CLP) :

P261 - Avoid breathing vapours, dust, fume, gas.
P305+P351+P338 - IF IN EYES: Rinse cautiously with water for several minutes.
Remove contact lenses, if present and easy to do. Continue rinsing.

2.3. Other hazards

No additional information available

SECTION 3: Composition/information on ingredients

3.1. Substances

Name : ANILINE BLUE (Water Soluble)

CAS-No. : 28983-56-4

Full text of R- and H-statements: see section 16

3.2. Mixtures

Not applicable

ANILINE BLUE (Water Soluble)

Safety Data Sheet

according to Regulation (EC) No. 1907/2006 (REACH) with its amendment Regulation (EU) 2015/830

SECTION 4: First aid measures

4.1. Description of first aid measures

- First-aid measures after inhalation : Remove person to fresh air and keep comfortable for breathing. Call a POISON CENTER/doctor if you feel unwell.
- First-aid measures after skin contact : Wash with plenty of water/.... Wash contaminated clothing before reuse. Get medical advice/attention.
- First-aid measures after eye contact : Rinse cautiously with water for several minutes. Remove contact lenses, if present and easy to do. Continue rinsing. Get medical advice/attention.
- First-aid measures after ingestion : Rinse mouth. Do not induce vomiting.

4.2. Most important symptoms and effects, both acute and delayed

- Symptoms/effects after inhalation : May cause respiratory irritation.
- Symptoms/effects after skin contact : Causes skin irritation.
- Symptoms/effects after eye contact : Causes serious eye irritation.

4.3. Indication of any immediate medical attention and special treatment needed

No additional information available

SECTION 5: Firefighting measures

5.1. Extinguishing media

- Suitable extinguishing media : Carbon dioxide. Dry powder. Foam. Water spray.
- Unsuitable extinguishing media : Do not use a heavy water stream.

5.2. Special hazards arising from the substance or mixture

No additional information available

5.3. Advice for firefighters

- Protection during firefighting : Do not enter fire area without proper protective equipment, including respiratory protection.

SECTION 6: Accidental release measures

6.1. Personal precautions, protective equipment and emergency procedures

6.1.1. For non-emergency personnel

- Emergency procedures : Evacuate unnecessary personnel.

6.1.2. For emergency responders

- Protective equipment : Use personal protective equipment as required.
- Emergency procedures : Ventilate area.

6.2. Environmental precautions

Avoid release to the environment.

6.3. Methods and material for containment and cleaning up

- Methods for cleaning up : Soak up spills with inert solids, such as clay or diatomaceous earth as soon as possible. On land, sweep or shovel into suitable containers.

6.4. Reference to other sections

No additional information available

SECTION 7: Handling and storage

7.1. Precautions for safe handling

- Precautions for safe handling : Avoid contact with skin and eyes. Use only outdoors or in a well-ventilated area. Do not breathe vapours.
- Hygiene measures : Wash hands and other exposed areas with mild soap and water before eating, drinking or smoking and when leaving work.

ANILINE BLUE (Water Soluble)

Safety Data Sheet

according to Regulation (EC) No. 1907/2006 (REACH) with its amendment Regulation (EU) 2015/830

7.2. Conditions for safe storage, including any incompatibilities

Storage conditions : Keep container tightly closed. Store in a well-ventilated place.

7.3. Specific end use(s)

No additional information available

SECTION 8: Exposure controls/personal protection

8.1. Control parameters

No additional information available

8.2. Exposure controls

Hand protection : Protective gloves
Eye protection : Chemical goggles or safety glasses
Skin and body protection : Wear suitable protective clothing
Respiratory protection : [In case of inadequate ventilation] wear respiratory protection.

SECTION 9: Physical and chemical properties

9.1. Information on basic physical and chemical properties

Physical state : Solid
Colour : Black.
Odour : odourless.
Odour threshold : No data available
pH : No data available
Relative evaporation rate (butylacetate=1) : No data available
Melting point : No data available
Freezing point : No data available
Boiling point : No data available
Flash point : No data available
Auto-ignition temperature : No data available
Decomposition temperature : No data available
Flammability (solid, gas) : No data available
Vapour pressure : No data available
Relative vapour density at 20 °C : No data available
Relative density : No data available
Solubility : Water: Soluble in water

ANILINE BLUE (Water Soluble)

Safety Data Sheet

according to Regulation (EC) No. 1907/2006 (REACH) with its amendment Regulation (EU) 2015/830

Log Pow	: No data available
Viscosity, kinematic	: No data available
Viscosity, dynamic	: No data available
Explosive properties	: No data available
Oxidising properties	: No data available
Explosive limits	: No data available

9.2. Other information

No additional information available

SECTION 10: Stability and reactivity

10.1. Reactivity

No additional information available

10.2. Chemical stability

Stable under normal conditions.

10.3. Possibility of hazardous reactions

No additional information available

10.4. Conditions to avoid

Direct sunlight. Air contact. Moisture.

10.5. Incompatible materials

No additional information available

10.6. Hazardous decomposition products

No additional information available

SECTION 11: Toxicological information

11.1. Information on toxicological effects

Acute toxicity	: Oral: Harmful if swallowed.
Skin corrosion/irritation	: Causes skin irritation.
Serious eye damage/irritation	: Causes serious eye irritation.
Respiratory or skin sensitisation	: Not classified
Germ cell mutagenicity	: Not classified
Carcinogenicity	: Not classified
Reproductive toxicity	: Not classified
STOT-single exposure	: May cause respiratory irritation.
STOT-repeated exposure	: Not classified
Aspiration hazard	: Not classified

ANILINE BLUE (Water Soluble)

Safety Data Sheet

according to Regulation (EC) No. 1907/2006 (REACH) with its amendment Regulation (EU) 2015/830

SECTION 12: Ecological information

12.1. Toxicity

No additional information available

12.2. Persistence and degradability

No additional information available

12.3. Bioaccumulative potential

No additional information available

12.4. Mobility in soil

No additional information available

12.5. Results of PBT and vPvB assessment

No additional information available

12.6. Other adverse effects

No additional information available

SECTION 13: Disposal considerations

13.1. Waste treatment methods

No additional information available

SECTION 14: Transport information

In accordance with ADR / RID / IMDG / IATA / ADN

14.1. UN number

UN-No. (ADR)	: Not applicable
UN-No. (IMDG)	: Not applicable
UN-No. (IATA)	: Not applicable
UN-No. (ADN)	: Not applicable
UN-No. (RID)	: Not applicable

14.2. UN proper shipping name

Proper Shipping Name (ADR)	: Not applicable
Proper Shipping Name (IMDG)	: Not applicable
Proper Shipping Name (IATA)	: Not applicable
Proper Shipping Name (ADN)	: Not applicable
Proper Shipping Name (RID)	: Not applicable

14.3. Transport hazard class(es)

ADR

Transport hazard class(es) (ADR)	: Not applicable
----------------------------------	------------------

ANILINE BLUE (Water Soluble)

Safety Data Sheet

according to Regulation (EC) No. 1907/2006 (REACH) with its amendment Regulation (EU) 2015/830

IMDG

Transport hazard class(es) (IMDG) : Not applicable

IATA

Transport hazard class(es) (IATA) : Not applicable

ADN

Transport hazard class(es) (ADN) : Not applicable

RID

Transport hazard class(es) (RID) : Not applicable

14.4. Packing group

Packing group (ADR) : Not applicable

Packing group (IMDG) : Not applicable

Packing group (IATA) : Not applicable

Packing group (ADN) : Not applicable

Packing group (RID) : Not applicable

14.5. Environmental hazards

Dangerous for the environment : No

Marine pollutant : No

Other information : No supplementary information available

14.6. Special precautions for user

- Overland transport

No data available

- Transport by sea

No data available

- Air transport

No data available

- Inland waterway transport

No data available

- Rail transport

No data available

14.7. Transport in bulk according to Annex II of MARPOL 73/78 and the IBC Code

Not applicable

SECTION 15: Regulatory information

15.1. Safety, health and environmental regulations/legislation specific for the substance or mixture

15.1.1. EU-Regulations

No REACH Annex XVII restrictions

ANILINE BLUE (Water Soluble) is not on the REACH Candidate List

ANILINE BLUE (Water Soluble) is not on the REACH Annex XIV List

ANILINE BLUE (Water Soluble)

Safety Data Sheet

according to Regulation (EC) No. 1907/2006 (REACH) with its amendment Regulation (EU) 2015/830

15.1.2. National regulations

Germany

12th Ordinance Implementing the Federal Immission Control Act - 12.BImSchV : Is not subject of the 12. BImSchV (Hazardous Incident Ordinance)

Netherlands

SZW-lijst van kankerverwekkende stoffen : The substance is not listed

SZW-lijst van mutagene stoffen : The substance is not listed

NIET-limitatieve lijst van voor de voortplanting giftige stoffen – Borstvoeding : The substance is not listed

NIET-limitatieve lijst van voor de voortplanting giftige stoffen – Vruchtbaarheid : The substance is not listed

NIET-limitatieve lijst van voor de voortplanting giftige stoffen – Ontwikkeling : The substance is not listed

Denmark

Recommendations Danish Regulation : Young people below the age of 18 years are not allowed to use the product

15.2. Chemical safety assessment

No additional information available

SECTION 16: Other information

Full text of R-, H- and EUH-statements:

Acute Tox. 4 (Oral)	Acute toxicity (oral), Category 4
Eye Irrit. 2	Serious eye damage/eye irritation, Category 2
Skin Irrit. 2	Skin corrosion/irritation, Category 2
STOT SE 3	Specific target organ toxicity — Single exposure, Category 3, Respiratory tract irritation
H302	Harmful if swallowed.
H315	Causes skin irritation.
H319	Causes serious eye irritation.
H335	May cause respiratory irritation.
R36/37/38	Irritating to eyes, respiratory system and skin
Xi	Irritant

This information is based on our current knowledge and is intended to describe the product for the purposes of health, safety and environmental requirements only. It should not therefore be construed as guaranteeing any specific property of the product