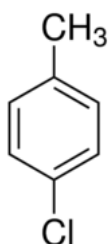


MATERIAL SAFETY DATA SHEET (MSDS)

SECTION 1: Identification of the substance/mixture and of the company/undertaking

1.1. Product identifier

Product form : Substance
:
CAS-No. : 106-43-4
Product code : 02774
Chemical structure :



1.2. Relevant identified uses of the substance or mixture and uses advised against

1.2.1. Relevant identified uses

Industrial/Professional use spec : Industrial
For professional use only

1.2.2. Uses advised against

No additional information available

1.3. Details of the supplier of the safety data sheet

LOBA CHEMIE PVT.LTD.
107 Wode House Road, Jehangir Villa, Colaba
400005 Mumbai - INDIA
T +91 22 6663 6663 - F +91 22 6663 6699
info@lobachemie.com - www.lobachemie.com

1.4. Emergency telephone number

Emergency number : + 91 22 6663 6663 (9:00am - 6:00 pm)

SECTION 2: Hazards identification

2.1. Classification of the substance or mixture

Classification according to Regulation (EC) No. 1272/2008 [CLP]

Acute toxicity (inhal.), H332
Category 4
Hazardous to the aquatic H411
environment — Chronic
Hazard, Category 2

Full text of H statements : see section 16

4-CHLOROTOLUENE FOR SYNTHESIS

Safety Data Sheet

Classification according to Directive 67/548/EEC [DSD] or 1999/45/EC [DPD]

Xn; R20

N; R51/53

Full text of R-phrases: see section 16

Adverse physicochemical, human health and environmental effects

No additional information available

2.2. Label elements

Labelling according to Regulation (EC) No. 1272/2008 [CLP]

Hazard pictograms (CLP) :



GHS07

GHS09

Signal word (CLP) : Warning

Hazard statements (CLP) : H332 - Harmful if inhaled.
H411 - Toxic to aquatic life with long lasting effects.

Precautionary statements (CLP) : P273 - Avoid release to the environment.

2.3. Other hazards

No additional information available

SECTION 3: Composition/information on ingredients

3.1. Substances

Name : 4-CHLOROTOLUENE FOR SYNTHESIS

CAS-No. : 106-43-4

Full text of R- and H-statements: see section 16

3.2. Mixtures

Not applicable

SECTION 4: First aid measures

4.1. Description of first aid measures

First-aid measures after inhalation : Assure fresh air breathing. If breathing is difficult, remove victim to fresh air and keep at rest in a position comfortable for breathing.

First-aid measures after skin contact : Wash with plenty of water/.... Remove affected clothing and wash all exposed skin area with mild soap and water, followed by warm water rinse. Get medical advice/attention.

4-CHLOROTOLUENE FOR SYNTHESIS

Safety Data Sheet

- First-aid measures after eye contact : Rinse cautiously with water for several minutes. Remove contact lenses, if present and easy to do. Continue rinsing. Get medical advice/attention.
- First-aid measures after ingestion : Rinse mouth. Do not induce vomiting.

4.2. Most important symptoms and effects, both acute and delayed

- Symptoms/effects after inhalation : Harmful if inhaled.

4.3. Indication of any immediate medical attention and special treatment needed

Treat symptomatically.

SECTION 5: Firefighting measures

5.1. Extinguishing media

- Suitable extinguishing media : Carbon dioxide. Dry powder. Foam. Water spray.
- Unsuitable extinguishing media : Do not use a heavy water stream.

5.2. Special hazards arising from the substance or mixture

- Fire hazard : Flammable liquid and vapour.
- Explosion hazard : May form flammable/explosive vapour-air mixture.

5.3. Advice for firefighters

- Protection during firefighting : Do not enter fire area without proper protective equipment, including respiratory protection.

SECTION 6: Accidental release measures

6.1. Personal precautions, protective equipment and emergency procedures

- General measures : Remove ignition sources. No open flames. No smoking. Use special care to avoid static electric charges.

6.1.1. For non-emergency personnel

- Emergency procedures : Evacuate unnecessary personnel.

6.1.2. For emergency responders

- Protective equipment : Use personal protective equipment as required.
- Emergency procedures : Ventilate area.

6.2. Environmental precautions

Avoid release to the environment.

6.3. Methods and material for containment and cleaning up

- Methods for cleaning up : On land, sweep or shovel into suitable containers. Collect spillage.

6.4. Reference to other sections

No additional information available

SECTION 7: Handling and storage

7.1. Precautions for safe handling

- Precautions for safe handling : Avoid contact with skin and eyes. Do not breathe vapours. Provide good ventilation in process area to prevent formation of vapour. Keep away from sources of ignition - No smoking.
- Hygiene measures : Do not eat, drink or smoke when using this product. Wash hands and other exposed areas with mild soap and water before eating, drinking or smoking and when leaving work.

7.2. Conditions for safe storage, including any incompatibilities

- Technical measures : Proper grounding procedures to avoid static electricity should be followed. Use explosion-proof electrical/ventilating/lighting equipment.
- Storage conditions : Keep container tightly closed. Keep in fireproof place.
- Incompatible materials : Heat sources.

4-CHLOROTOLUENE FOR SYNTHESIS

Safety Data Sheet

7.3. Specific end use(s)

No additional information available

SECTION 8: Exposure controls/personal protection

8.1. Control parameters

No additional information available

8.2. Exposure controls

Hand protection	: Protective gloves
Eye protection	: Chemical goggles or safety glasses
Skin and body protection	: Wear suitable protective clothing
Respiratory protection	: [In case of inadequate ventilation] wear respiratory protection.

SECTION 9: Physical and chemical properties

9.1. Information on basic physical and chemical properties

Physical state	: Liquid
Molecular mass	: 126.59 g/mol
Colour	: Light yellow.
Odour	: No data available
Odour threshold	: No data available
pH	: No data available
Relative evaporation rate (butylacetate=1)	: No data available
Melting point	: 6 - 8 °C
Freezing point	: No data available
Boiling point	: 162 °C
Flash point	: 53 °C
Auto-ignition temperature	: No data available
Decomposition temperature	: No data available
Flammability (solid, gas)	: Flammable
Vapour pressure	: 13.3 hPa at 45°C
Relative vapour density at 20 °C	: No data available
Relative density	: No data available
Density	: 1.07 g/cm ³
Solubility	: No data available
Log Pow	: 3.32

4-CHLOROTOLUENE FOR SYNTHESIS

Safety Data Sheet

Viscosity, kinematic	: No data available
Viscosity, dynamic	: No data available
Explosive properties	: No data available
Oxidising properties	: No data available
Explosive limits	: No data available

9.2. Other information

No additional information available

SECTION 10: Stability and reactivity

10.1. Reactivity

No additional information available

10.2. Chemical stability

Stable under normal conditions.

10.3. Possibility of hazardous reactions

No additional information available

10.4. Conditions to avoid

Open flame. Heat. Sparks.

10.5. Incompatible materials

Oxidizing agent.

10.6. Hazardous decomposition products

No additional information available

SECTION 11: Toxicological information

11.1. Information on toxicological effects

Acute toxicity : Inhalation: Harmful if inhaled.

Skin corrosion/irritation : Not classified

Serious eye damage/irritation : Not classified

Respiratory or skin sensitisation : Not classified

Germ cell mutagenicity : Not classified

Carcinogenicity : Not classified

Reproductive toxicity : Not classified

STOT-single exposure : Not classified

STOT-repeated exposure : Not classified

Aspiration hazard : Not classified

4-CHLOROTOLUENE FOR SYNTHESIS

Safety Data Sheet

SECTION 12: Ecological information

12.1. Toxicity

Ecology - water : Toxic to aquatic life with long lasting effects.

12.2. Persistence and degradability

4-CHLOROTOLUENE FOR SYNTHESIS (106-43-4)

Persistence and degradability	May cause long-term adverse effects in the environment.
-------------------------------	---

12.3. Bioaccumulative potential

4-CHLOROTOLUENE FOR SYNTHESIS (106-43-4)

Log Pow	3.32
---------	------

12.4. Mobility in soil

No additional information available

12.5. Results of PBT and vPvB assessment

No additional information available

12.6. Other adverse effects

No additional information available

SECTION 13: Disposal considerations

13.1. Waste treatment methods

Product/Packaging disposal recommendations : Dispose of contents/container to hazardous or special waste collection point, in accordance with local, regional, national and/or international regulation.

SECTION 14: Transport information

In accordance with ADR / RID / IMDG / IATA / ADN

14.1. UN number

UN-No. (ADR)	: 2238
UN-No. (IMDG)	: 2238
UN-No. (IATA)	: 2238
UN-No. (ADN)	: 2238
UN-No. (RID)	: 2238

14.2. UN proper shipping name

Proper Shipping Name (ADR)	: CHLOROTOLUENES
Proper Shipping Name (IMDG)	: CHLOROTOLUENES
Proper Shipping Name (IATA)	: Chlorotoluenes
Proper Shipping Name (ADN)	: CHLOROTOLUENES
Proper Shipping Name (RID)	: CHLOROTOLUENES
Transport document description (ADR)	: UN 2238 CHLOROTOLUENES, 3, III, (D/E), ENVIRONMENTALLY HAZARDOUS
Transport document description (IMDG)	: UN 2238 CHLOROTOLUENES, 3, III, MARINE POLLUTANT/ENVIRONMENTALLY HAZARDOUS (43°C c.c.)
Transport document description (IATA)	: UN 2238 Chlorotoluenes, 3, III, ENVIRONMENTALLY HAZARDOUS

4-CHLOROTOLUENE FOR SYNTHESIS

Safety Data Sheet

Transport document description (ADN) : UN 2238 CHLOROTOLUENES, 3, III, ENVIRONMENTALLY HAZARDOUS
Transport document description (RID) : UN 2238 CHLOROTOLUENES, 3, III, ENVIRONMENTALLY HAZARDOUS

14.3. Transport hazard class(es)

ADR

Transport hazard class(es) (ADR) : 3
Danger labels (ADR) : 3



IMDG

Transport hazard class(es) (IMDG) : 3
Danger labels (IMDG) : 3



IATA

Transport hazard class(es) (IATA) : 3
Hazard labels (IATA) : 3



ADN

Transport hazard class(es) (ADN) : 3
Danger labels (ADN) : 3



RID

Transport hazard class(es) (RID) : 3
Danger labels (RID) : 3



14.4. Packing group

Packing group (ADR) : III
Packing group (IMDG) : III
Packing group (IATA) : III

4-CHLOROTOLUENE FOR SYNTHESIS

Safety Data Sheet

Packing group (ADN) : III
Packing group (RID) : III

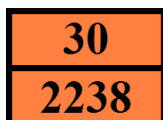
14.5. Environmental hazards

Dangerous for the environment : Yes
Marine pollutant : Yes
Other information : No supplementary information available

14.6. Special precautions for user

- Overland transport

Classification code (ADR) : F1
Limited quantities (ADR) : 5I
Excepted quantities (ADR) : E1
Packing instructions (ADR) : P001, IBC03, LP01, R001
Mixed packing provisions (ADR) : MP19
Portable tank and bulk container instructions (ADR) : T2
Portable tank and bulk container special provisions (ADR) : TP1
Tank code (ADR) : LGBF
Vehicle for tank carriage : FL
Transport category (ADR) : 3
Special provisions for carriage - Packages (ADR) : V12
Special provisions for carriage - Operation (ADR) : S2
Hazard identification number (Kemler No.) : 30
Orange plates :



Tunnel restriction code (ADR) : D/E
EAC code : 3Y

- Transport by sea

Packing instructions (IMDG) : P001, LP01
IBC packing instructions (IMDG) : IBC03
Tank instructions (IMDG) : T2
Tank special provisions (IMDG) : TP1
EmS-No. (Fire) : F-E
EmS-No. (Spillage) : S-D
Stowage category (IMDG) : A
Flash point (IMDG) : 43°C to 47°C c.c.
Properties and observations (IMDG) : Colourless to brown liquids. Flashpoint: 43°C to 47°C c.c. Immiscible with water. When involved in a fire, evolve toxic gases. Harmful by skin contact or by inhalation. Irritating to eyes and mucous membranes.
MFAG-No : 129

- Air transport

PCA Excepted quantities (IATA) : E1
PCA Limited quantities (IATA) : Y344
PCA limited quantity max net quantity (IATA) : 10L
PCA packing instructions (IATA) : 355
PCA max net quantity (IATA) : 60L

4-CHLOROTOLUENE FOR SYNTHESIS

Safety Data Sheet

CAO packing instructions (IATA) : 366
CAO max net quantity (IATA) : 220L
ERG code (IATA) : 3L

- Inland waterway transport

Classification code (ADN) : F1
Limited quantities (ADN) : 5 L
Excepted quantities (ADN) : E1
Carriage permitted (ADN) : T
Equipment required (ADN) : PP, EX, A
Ventilation (ADN) : VE01
Number of blue cones/lights (ADN) : 0

- Rail transport

Classification code (RID) : F1
Excepted quantities (RID) : E1
Packing instructions (RID) : P001, IBC03, LP01, R001
Mixed packing provisions (RID) : MP19
Portable tank and bulk container instructions (RID) : T2
Portable tank and bulk container special provisions (RID) : TP1
Tank codes for RID tanks (RID) : LGBF
Transport category (RID) : 3
Special provisions for carriage – Packages (RID) : W12
Colis express (express parcels) (RID) : CE4
Hazard identification number (RID) : 30

14.7. Transport in bulk according to Annex II of MARPOL 73/78 and the IBC Code

Not applicable

SECTION 15: Regulatory information

15.1. Safety, health and environmental regulations/legislation specific for the substance or mixture

15.1.1. EU-Regulations

No REACH Annex XVII restrictions

4-CHLOROTOLUENE FOR SYNTHESIS is not on the REACH Candidate List

4-CHLOROTOLUENE FOR SYNTHESIS is not on the REACH Annex XIV List

15.1.2. National regulations

Germany

Reference to AwSV : Water hazard class (WGK) 2, significant hazard to water (Classification according to AwSV; ID No. 237)

12th Ordinance Implementing the Federal Immission Control Act - 12.BImSchV : Is not subject of the 12. BImSchV (Hazardous Incident Ordinance)

Netherlands

4-CHLOROTOLUENE FOR SYNTHESIS

Safety Data Sheet

SZW-lijst van kankerverwekkende stoffen	: The substance is not listed
SZW-lijst van mutagene stoffen	: The substance is not listed
NIET-limitatieve lijst van voor de voortplanting giftige stoffen – Borstvoeding	: The substance is not listed
NIET-limitatieve lijst van voor de voortplanting giftige stoffen – Vruchtbaarheid	: The substance is not listed
NIET-limitatieve lijst van voor de voortplanting giftige stoffen – Ontwikkeling	: The substance is not listed

Denmark

Class for fire hazard	: Class II-1
Store unit	: 5 liter
Classification remarks	: R10 <H332;H411>; Emergency management guidelines for the storage of flammable liquids must be followed
Recommendations Danish Regulation	: Young people below the age of 18 years are not allowed to use the product

15.2. Chemical safety assessment

No additional information available

SECTION 16: Other information

Full text of R-, H- and EUH-statements:

Acute Tox. 4 (Inhalation)	Acute toxicity (inhal.), Category 4
Aquatic Chronic 2	Hazardous to the aquatic environment — Chronic Hazard, Category 2
H332	Harmful if inhaled.
H411	Toxic to aquatic life with long lasting effects.
R20	Harmful by inhalation
R51/53	Toxic to aquatic organisms, may cause long-term adverse effects in the aquatic environment
N	Dangerous for the environment
Xn	Harmful

This information is based on our current knowledge and is intended to describe the product for the purposes of health, safety and environmental requirements only. It should not therefore be construed as guaranteeing any specific property of the product