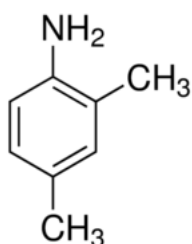


### MATERIAL SAFETY DATA SHEET (MSDS)

#### SECTION 1: Identification of the substance/mixture and of the company/undertaking

##### 1.1. Product identifier

Product form : Substance  
:  
EC no : 202-440-0  
CAS No : 95-68-1  
Product code : 06508  
Chemical structure :



Synonyms : 1-Amino-2,4-dimethylbenzene / 4-Amino-m-xylene  
/ 2,4-Dimethylaniline

##### 1.2. Relevant identified uses of the substance or mixture and uses advised against

###### 1.2.1. Relevant identified uses

Use of the substance/mixture : Industrial. For professional use only.

###### 1.2.2. Uses advised against

No additional information available

##### 1.3. Details of the supplier of the safety data sheet

LOBA CHEMIE PVT.LTD.  
107 Wode House Road, Jehangir Villa, Colaba  
400005 Mumbai - INDIA  
T +91 22 6663 6663 - F +91 22 6663 6699  
[info@lobachemie.com](mailto:info@lobachemie.com) - [www.lobachemie.com](http://www.lobachemie.com)

##### 1.4. Emergency telephone number

Emergency number : + 91 22 6663 6663 (9:00am - 6:00 pm)

#### SECTION 2: Hazards identification

##### 2.1. Classification of the substance or mixture

###### Classification according to Regulation (EC) No. 1272/2008 [CLP]

Acute toxicity (oral), H301  
Category 3  
Acute toxicity (dermal), H311  
Category 3  
Acute toxicity (inhal.), H331  
Category 3

# 2,4-XYLIDINE Extra Pure

## Safety Data Sheet

Specific target organ toxicity — Repeated exposure, Category 2 H373  
Hazardous to the aquatic environment — Chronic Hazard, Category 2 H411

Full text of classification categories and H statements : see section 16

### Classification according to Directive 67/548/EEC or 1999/45/EC

T; R23/24/25  
N; R51/53  
R33

Full text of R-phrases: see section 16

### Adverse physicochemical, human health and environmental effects

No additional information available

## 2.2. Label elements

### Labelling according to Regulation (EC) No. 1272/2008 [CLP]

Hazard pictograms (CLP) :



GHS06



GHS08



GHS09

Signal word (CLP) :

Danger

Hazard statements (CLP) :

H301+H311+H331 - Toxic if swallowed, in contact with skin or if inhaled  
H373 - May cause damage to organs through prolonged or repeated exposure  
H411 - Toxic to aquatic life with long lasting effects

Precautionary statements (CLP) :

P261 - Avoid breathing dust/fume/gas/mist/vapours/spray  
P273 - Avoid release to the environment  
P280 - Wear protective gloves/protective clothing/eye protection/face protection  
P301+P310 - IF SWALLOWED: Immediately call a POISON CENTER/doctor/...  
P311 - Call a POISON CENTER/doctor/...

## 2.3. Other hazards

No additional information available

## SECTION 3: Composition/information on ingredients

### 3.1. Substance

Name : 2,4-XYLIDINE Extra Pure  
CAS No : 95-68-1  
EC no : 202-440-0

# 2,4-XYLIDINE Extra Pure

## Safety Data Sheet

Full text of R- and H-phrases: see section 16

### 3.2. Mixture

Not applicable

## SECTION 4: First aid measures

### 4.1. Description of first aid measures

First-aid measures after inhalation	: Assure fresh air breathing. If breathing is difficult, remove victim to fresh air and keep at rest in a position comfortable for breathing.
First-aid measures after skin contact	: Remove/Take off immediately all contaminated clothing. Wash with plenty of soap and water. Get medical advice/attention.
First-aid measures after eye contact	: Rinse immediately with plenty of water. Get medical advice/attention.
First-aid measures after ingestion	: Rinse mouth. Obtain emergency medical attention.

### 4.2. Most important symptoms and effects, both acute and delayed

Symptoms/injuries	: There are potential chronic health effects to consider.
Symptoms/injuries after skin contact	: Repeated exposure to this material can result in absorption through skin causing significant health hazard. Toxic in contact with skin.
Symptoms/injuries after ingestion	: Toxic if swallowed. Swallowing a small quantity of this material will result in serious health hazard.

### 4.3. Indication of any immediate medical attention and special treatment needed

Treat symptomatically.

## SECTION 5: Firefighting measures

### 5.1. Extinguishing media

Suitable extinguishing media	: Carbon dioxide. Dry powder. Foam. Water spray.
Unsuitable extinguishing media	: Do not use a heavy water stream.

### 5.2. Special hazards arising from the substance or mixture

No additional information available

### 5.3. Advice for firefighters

Protection during firefighting	: Do not enter fire area without proper protective equipment, including respiratory protection.
--------------------------------	---

## SECTION 6: Accidental release measures

### 6.1. Personal precautions, protective equipment and emergency procedures

#### 6.1.1. For non-emergency personnel

Emergency procedures	: Evacuate unnecessary personnel.
----------------------	-----------------------------------

#### 6.1.2. For emergency responders

Protective equipment	: Equip cleanup crew with proper protection.
Emergency procedures	: Stop release.

### 6.2. Environmental precautions

Avoid release to the environment.

### 6.3. Methods and material for containment and cleaning up

Methods for cleaning up	: On land, sweep or shovel into suitable containers. Soak up spills with inert solids, such as clay or diatomaceous earth as soon as possible.
-------------------------	--

### 6.4. Reference to other sections

No additional information available

# 2,4-XYLIDINE Extra Pure

## Safety Data Sheet

### SECTION 7: Handling and storage

#### 7.1. Precautions for safe handling

Precautions for safe handling	: Avoid contact with skin and eyes. Do not breathe vapours. Provide good ventilation in process area to prevent formation of vapour.
Hygiene measures	: Do not eat, drink or smoke when using this product. Wash hands and other exposed areas with mild soap and water before eating, drinking or smoking and when leaving work.

#### 7.2. Conditions for safe storage, including any incompatibilities

Storage conditions	: Store in a well-ventilated place. Keep container tightly closed. Store in original container. Keep container tightly closed.
--------------------	--

#### 7.3. Specific end use(s)

No additional information available

### SECTION 8: Exposure controls/personal protection

#### 8.1. Control parameters

No additional information available

#### 8.2. Exposure controls

Hand protection	: protective gloves
Eye protection	: Chemical goggles or safety glasses
Skin and body protection	: Wear fire/flame resistant/retardant clothing
Respiratory protection	: Wear respiratory protection

### SECTION 9: Physical and chemical properties

#### 9.1. Information on basic physical and chemical properties

Physical state	: Liquid
Molecular mass	: 121.18 g/mol
Colour	: Yellowish brown.
Odour	: amine like.
Odour threshold	: No data available
pH	: No data available
Relative evaporation rate (butylacetate=1)	: No data available
Melting point	: -14 °C
Freezing point	: No data available
Boiling point	: 218 °C
Flash point	: 98 °C
Auto-ignition temperature	: 460 °C
Decomposition temperature	: No data available

# 2,4-XYLIDINE Extra Pure

## Safety Data Sheet

Flammability (solid, gas)	: No data available
Vapour pressure	: No data available
Relative vapour density at 20 °C	: 4.18
Relative density	: No data available
Density	: 0.98 g/cm <sup>3</sup>
Solubility	: Water: Soluble in water
Log Pow	: 1.68
Viscosity, kinematic	: No data available
Viscosity, dynamic	: No data available
Explosive properties	: No data available
Oxidising properties	: No data available
Explosive limits	: 0.011 - 0.07 vol %

### 9.2. Other information

No additional information available

## SECTION 10: Stability and reactivity

### 10.1. Reactivity

No additional information available

### 10.2. Chemical stability

Stable under normal conditions.

### 10.3. Possibility of hazardous reactions

No additional information available

### 10.4. Conditions to avoid

Direct sunlight. Overheating. Open flame.

### 10.5. Incompatible materials

No additional information available

### 10.6. Hazardous decomposition products

No additional information available

## SECTION 11: Toxicological information

### 11.1. Information on toxicological effects

Acute toxicity : Oral: Toxic if swallowed. Dermal: Toxic in contact with skin. Inhalation: Toxic if inhaled.

Skin corrosion/irritation : Not classified

Serious eye damage/irritation : Not classified

Respiratory or skin sensitisation : Not classified

Germ cell mutagenicity : Not classified

Carcinogenicity : Not classified

# 2,4-XYLIDINE Extra Pure

## Safety Data Sheet

Reproductive toxicity	: Not classified
Specific target organ toxicity (single exposure)	: Not classified
Specific target organ toxicity (repeated exposure)	: May cause damage to organs through prolonged or repeated exposure.
Additional information	: There are potential chronic health effects to consider
Aspiration hazard	: Not classified
Potential adverse human health effects and symptoms	: Toxic if swallowed. Toxic in contact with skin.

### SECTION 12: Ecological information

#### 12.1. Toxicity

Ecology - water : Toxic to aquatic life with long lasting effects.

#### 12.2. Persistence and degradability

##### 2,4-XYLIDINE Extra Pure (95-68-1)

Persistence and degradability	May cause long-term adverse effects in the environment.
-------------------------------	---

#### 12.3. Bioaccumulative potential

##### 2,4-XYLIDINE Extra Pure (95-68-1)

Log Pow	1.68
---------	------

#### 12.4. Mobility in soil

No additional information available

#### 12.5. Results of PBT and vPvB assessment

No additional information available

#### 12.6. Other adverse effects

No additional information available

### SECTION 13: Disposal considerations

#### 13.1. Waste treatment methods

Product/Packaging disposal recommendations	: Dispose of contents/container to ...
Ecology - waste materials	: Hazardous waste due to toxicity.

### SECTION 14: Transport information

In accordance with ADR / RID / IMDG / IATA / ADN

# 2,4-XYLIDINE Extra Pure

## Safety Data Sheet

### 14.1. UN number

UN-No. (ADR)	: 1711
UN-No. (IMDG)	: 1711
UN-No.(IATA)	: 1711
UN-No.(ADN)	: 1711
UN-No. (RID)	: 1711

### 14.2. UN proper shipping name

Proper Shipping Name (ADR)	: XYLIDINES, LIQUID
Proper Shipping Name (IMDG)	: XYLIDINES, LIQUID
Proper Shipping Name (IATA)	: XYLIDINES, LIQUID
Proper Shipping Name (ADN)	: XYLIDINES, LIQUID
Proper Shipping Name (RID)	: XYLIDINES, LIQUID
Transport document description (ADR)	: UN 1711 XYLIDINES, LIQUID, 6.1, II, (D/E), ENVIRONMENTALLY HAZARDOUS
Transport document description (IMDG)	: UN 1711 XYLIDINES, LIQUID, 6.1, II, MARINE POLLUTANT/ENVIRONMENTALLY HAZARDOUS
Transport document description (IATA)	: UN 1711 XYLIDINES, LIQUID, 6.1, II, ENVIRONMENTALLY HAZARDOUS
Transport document description (ADN)	: UN 1711 XYLIDINES, LIQUID, 6.1, II, ENVIRONMENTALLY HAZARDOUS
Transport document description (RID)	: UN 1711 XYLIDINES, LIQUID, 6.1, II, ENVIRONMENTALLY HAZARDOUS

### 14.3. Transport hazard class(es)

#### ADR

Transport hazard class(es) (ADR)	: 6.1
Danger labels (ADR)	: 6.1



#### IMDG

Transport hazard class(es) (IMDG)	: 6.1
Danger labels (IMDG)	: 6.1



#### IATA

Transport hazard class(es) (IATA)	: 6.1
Hazard labels (IATA)	: 6.1



#### ADN

Transport hazard class(es) (ADN)	: 6.1
Danger labels (ADN)	: 6.1

# 2,4-XYLIDINE Extra Pure

## Safety Data Sheet



### RID

Transport hazard class(es) (RID) : 6.1

Danger labels (RID) : 6.1



### 14.4. Packing group

Packing group (ADR) : II

Packing group (IMDG) : II

Packing group (IATA) : II

Packing group (ADN) : II

Packing group (RID) : II

### 14.5. Environmental hazards

Dangerous for the environment : Yes

Marine pollutant : Yes

Other information : No supplementary information available

### 14.6. Special precautions for user

#### - Overland transport

Classification code (ADR) : T1

Limited quantities (ADR) : 100ml

Excepted quantities (ADR) : E4

Packing instructions (ADR) : P001, IBC02

Mixed packing provisions (ADR) : MP15

Portable tank and bulk container instructions (ADR) : T7

Portable tank and bulk container special provisions (ADR) : TP2

Tank code (ADR) : L4BH

Tank special provisions (ADR) : TU15, TE19

Vehicle for tank carriage : AT

Transport category (ADR) : 2

Special provisions for carriage - Loading, unloading and handling (ADR) : CV13, CV28

Special provisions for carriage - Operation (ADR) : S9, S19

Hazard identification number (Kemler No.) : 60

Orange plates :



Tunnel restriction code (ADR) : D/E

EAC code : 2X



# 2,4-XYLIDINE Extra Pure

## Safety Data Sheet

---

### - Transport by sea

Limited quantities (IMDG)	: 100 ml
Excepted quantities (IMDG)	: E4
Packing instructions (IMDG)	: P001
IBC packing instructions (IMDG)	: IBC02
Tank instructions (IMDG)	: T7
Tank special provisions (IMDG)	: TP2
EmS-No. (Fire)	: F-A
EmS-No. (Spillage)	: S-A
Stowage category (IMDG)	: A
MFAG-No	: 153

### - Air transport

PCA Excepted quantities (IATA)	: E4
PCA Limited quantities (IATA)	: Y641
PCA limited quantity max net quantity (IATA)	: 1L
PCA packing instructions (IATA)	: 654
PCA max net quantity (IATA)	: 5L
CAO packing instructions (IATA)	: 662
CAO max net quantity (IATA)	: 60L
ERG code (IATA)	: 6L

### - Inland waterway transport

Classification code (ADN)	: T1
Special provisions (ADN)	: 802
Limited quantities (ADN)	: 100 ml
Excepted quantities (ADN)	: E4
Equipment required (ADN)	: PP, EP, TOX, A
Ventilation (ADN)	: VE02
Number of blue cones/lights (ADN)	: 2

### - Rail transport

Classification code (RID)	: T1
Limited quantities (RID)	: 100ml
Excepted quantities (RID)	: E4
Packing instructions (RID)	: P001, IBC02
Mixed packing provisions (RID)	: MP15
Portable tank and bulk container instructions (RID)	: T7
Portable tank and bulk container special provisions (RID)	: TP2
Tank codes for RID tanks (RID)	: L4BH
Special provisions for RID tanks (RID)	: TU15
Transport category (RID)	: 2
Special provisions for carriage – Loading and unloading (RID)	: CW13, CW28, CW31
Colis express (express parcels) (RID)	: CE5
Hazard identification number (RID)	: 60

### 14.7. Transport in bulk according to Annex II of MARPOL 73/78 and the IBC Code

Not applicable

# 2,4-XYLIDINE Extra Pure

## Safety Data Sheet

### SECTION 15: Regulatory information

#### 15.1. Safety, health and environmental regulations/legislation specific for the substance or mixture

##### 15.1.1. EU-Regulations

No REACH Annex XVII restrictions

2,4-XYLIDINE Extra Pure is not on the REACH Candidate List

2,4-XYLIDINE Extra Pure is not on the REACH Annex XIV List

##### 15.1.2. National regulations

###### Germany

AwSV/VwVwS Annex reference : Water hazard class (WGK) 3, strongly hazardous to water (KBwS-Beschluss; WGK No 7857)

12th Ordinance Implementing the Federal Immission Control Act - 12.BImSchV : Is not subject of the 12. BImSchV (Hazardous Incident Ordinance)

###### Denmark

Class for fire hazard : Class III-1

Store unit : 50 liter

Classification remarks : Flammable according to the Danish Ministry of Justice; Emergency management guidelines for the storage of flammable liquids must be followed

Recommendations Danish Regulation : Young people below the age of 18 years are not allowed to use the product  
Pregnant/breastfeeding women working with the product must not be in direct contact with the product

#### 15.2. Chemical safety assessment

No additional information available

### SECTION 16: Other information

Full text of R-, H- and EUH-phrases:

Acute Tox. 3 (Dermal)	Acute toxicity (dermal), Category 3
Acute Tox. 3 (Inhalation)	Acute toxicity (inhal.), Category 3
Acute Tox. 3 (Oral)	Acute toxicity (oral), Category 3
Aquatic Chronic 2	Hazardous to the aquatic environment — Chronic Hazard, Category 2
STOT RE 2	Specific target organ toxicity — Repeated exposure, Category 2
H301	Toxic if swallowed
H311	Toxic in contact with skin
H331	Toxic if inhaled
H373	May cause damage to organs through prolonged or repeated exposure

# 2,4-XYLIDINE Extra Pure

## Safety Data Sheet

H411	Toxic to aquatic life with long lasting effects
R23/24/25	Toxic by inhalation, in contact with skin and if swallowed
R33	Danger of cumulative effects
R51/53	Toxic to aquatic organisms, may cause long-term adverse effects in the aquatic environment
N	Dangerous for the environment
T	Toxic

*This information is based on our current knowledge and is intended to describe the product for the purposes of health, safety and environmental requirements only. It should not therefore be construed as guaranteeing any specific property of the product*