

1-NAPHTHYLAMINE EXTRA PURE

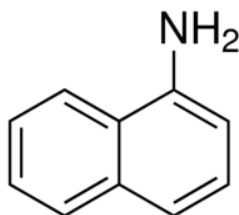
Safety Data Sheet

according to the REACH Regulation (EC) 1907/2006 amended by Regulation (EU) 2020/878
Reference number: 04795
Issue date: 6/10/2024 Revision date: 6/10/2024 Supersedes version of: 4/9/2015 Version: 1.0

SECTION 1: Identification of the substance/mixture and of the company/undertaking

1.1. Product identifier

Product form : Substance
Trade name : 1-NAPHTHYLAMINE EXTRA PURE
EC Index-No. : 612-020-00-2
EC-No. : 205-138-7
CAS-No. : 134-32-7
Product code : 04795
Type of product : Aromatic amines
Formula : C₁₀H₉N
Chemical structure :



Synonyms : Naphthalen-1-amine, (Naphthalen-1-yl)amine, 1-Naphthylamine, α -Naphthylamine, 1-Aminonaphthalene

1.2. Relevant identified uses of the substance or mixture and uses advised against

1.2.1. Relevant identified uses

Use of the substance/mixture : Laboratory chemicals, Manufacture of substances

1.2.2. Uses advised against

No additional information available

1.3. Details of the supplier of the safety data sheet

LOBA CHEMIE PVT.LTD.
107 Wode House Road, Jehangir Villa, Colaba
400005 Mumbai
INDIA
T +91 22 6663 6663, F +91 22 6663 6699
info@lobachemie.com, www.lobachemie.com

1.4. Emergency telephone number

Emergency number : + 91 22 6663 6663 (9:00am - 6:00 pm)

SECTION 2: Hazards identification

2.1. Classification of the substance or mixture

Classification according to Regulation (EC) No. 1272/2008 [CLP]

Acute toxicity (oral), Category 4 H302
Carcinogenicity, Category 1A H350
Hazardous to the aquatic environment – Chronic Hazard, Category 2 H411

Full text of H- and EUH-statements: see section 16

Adverse physicochemical, human health and environmental effects

May cause cancer. Harmful if swallowed. Toxic to aquatic life with long lasting effects.

1-NAPHTHYLAMINE EXTRA PURE

Safety Data Sheet

according to the REACH Regulation (EC) 1907/2006 amended by Regulation (EU) 2020/878

2.2. Label elements

Labelling according to Regulation (EC) No. 1272/2008 [CLP]

Hazard pictograms (CLP) :



GHS07

GHS08

GHS09

Signal word (CLP) :

Danger

Hazard statements (CLP) :

H302 - Harmful if swallowed.

H350 - May cause cancer.

H411 - Toxic to aquatic life with long lasting effects.

Precautionary statements (CLP) :

P202 - Do not handle until all safety precautions have been read and understood.

P264 - Wash hands, forearms and face thoroughly after handling.

P273 - Avoid release to the environment.

P301+P312 - IF SWALLOWED: Call a POISON CENTRE or doctor if you feel unwell.

P308+P313 - IF exposed or concerned: Get medical advice/attention.

2.3. Other hazards

Contains no PBT and/or vPvB substances $\geq 0.1\%$ assessed in accordance with REACH Annex XIII

SECTION 3: Composition/information on ingredients

3.1. Substances

Substance type : Mono-constituent

Name	Product identifier	%
1-NAPHTHYLAMINE	CAS-No.: 134-32-7 EC-No.: 205-138-7 EC Index-No.: 612-020-00-2	100

3.2. Mixtures

Not applicable

SECTION 4: First aid measures

4.1. Description of first aid measures

First-aid measures general	: IF exposed or concerned: Get medical advice/attention. Call a poison center or a doctor if you feel unwell.
First-aid measures after inhalation	: Remove person to fresh air and keep comfortable for breathing. Give oxygen or artificial respiration if necessary. If you feel unwell, seek medical advice.
First-aid measures after skin contact	: Wash skin with plenty of water. If skin irritation occurs: Get medical advice/attention.
First-aid measures after eye contact	: Remove contact lenses, if present and easy to do. Continue rinsing. Rinse cautiously with water for several minutes. If eye irritation persists: Get medical advice/attention.
First-aid measures after ingestion	: Rinse mouth. Call a POISON CENTER/doctor if you feel unwell. Call a poison center or a doctor if you feel unwell.

4.2. Most important symptoms and effects, both acute and delayed

Symptoms/effects after inhalation	: Dust of the product, if present, may cause respiratory irritation after an excessive inhalation exposure. Although no appropriate human or animal health effects data are known to exist, this material is expected to be an inhalation hazard.
Symptoms/effects after skin contact	: None under normal conditions. Dust may cause irritation in skin folds or by contact in combination with tight clothing.
Symptoms/effects after eye contact	: None under normal conditions. Dust from this product may cause eye irritation.
Symptoms/effects after ingestion	: Harmful if swallowed.
Chronic symptoms	: May cause cancer.

1-NAPHTHYLAMINE EXTRA PURE

Safety Data Sheet

according to the REACH Regulation (EC) 1907/2006 amended by Regulation (EU) 2020/878

4.3. Indication of any immediate medical attention and special treatment needed

Treat symptomatically.

SECTION 5: Firefighting measures

5.1. Extinguishing media

- Suitable extinguishing media : dry chemical powder, alcohol-resistant foam, carbon dioxide (CO₂). Water spray. Dry powder. Foam.
- Unsuitable extinguishing media : Do not use a heavy water stream.

5.2. Special hazards arising from the substance or mixture

- Fire hazard : No fire hazard.
- Explosion hazard : No direct explosion hazard.
- Hazardous decomposition products in case of fire : Toxic fumes may be released.

5.3. Advice for firefighters

- Firefighting instructions : Fight fire from safe distance and protected location. Do not enter fire area without proper protective equipment, including respiratory protection.
- Protection during firefighting : Do not attempt to take action without suitable protective equipment. Self-contained breathing apparatus. Complete protective clothing.

SECTION 6: Accidental release measures

6.1. Personal precautions, protective equipment and emergency procedures

- General measures : Notify authorities if product enters sewers or public waters. Absorb spillage to prevent material damage.

6.1.1. For non-emergency personnel

- Protective equipment : Wear recommended personal protective equipment.
- Emergency procedures : Evacuate unnecessary personnel. Only qualified personnel equipped with suitable protective equipment may intervene.

6.1.2. For emergency responders

- Protective equipment : Do not attempt to take action without suitable protective equipment. Use personal protective equipment as required. For further information refer to section 8: "Exposure controls/personal protection".
- Emergency procedures : Ventilate area. Evacuate unnecessary personnel.

6.2. Environmental precautions

Avoid release to the environment. Toxic to aquatic life with long lasting effects. Notify authorities if product enters sewers or public waters.

6.3. Methods and material for containment and cleaning up

- For containment : Collect spillage.
- Methods for cleaning up : Mechanically recover the product. Clean up immediately by sweeping or vacuum. Notify authorities if product enters sewers or public waters.
- Other information : Dispose of materials or solid residues at an authorized site.

6.4. Reference to other sections

For further information refer to section 13.

SECTION 7: Handling and storage

7.1. Precautions for safe handling

- Additional hazards when processed : Not expected to present a significant hazard under anticipated conditions of normal use.

1-NAPHTHYLAMINE EXTRA PURE

Safety Data Sheet

according to the REACH Regulation (EC) 1907/2006 amended by Regulation (EU) 2020/878

Precautions for safe handling	: Ensure good ventilation of the work station. Do not get in eyes, on skin, or on clothing. Obtain special instructions before use. Do not handle until all safety precautions have been read and understood. Take all necessary technical measures to avoid or minimize the release of the product on the workplace. Limit quantities of product at the minimum necessary for handling and limit the number of exposed workers. Provide local exhaust or general room ventilation. Wear personal protective equipment. Floors, walls and other surfaces in the hazard area must be cleaned regularly.
Hygiene measures	: Do not eat, drink or smoke when using this product. Wash hands, forearms and face thoroughly after handling. Separate working clothes from town clothes. Launder separately. Always wash hands after handling the product.

7.2. Conditions for safe storage, including any incompatibilities

Technical measures	: Keep in a cool, well-ventilated place away from heat.
Storage conditions	: Store in original container. Keep container tightly closed. Store in a dry place. Store locked up.
Packaging materials	: Store always product in container of same material as original container.

7.3. Specific end use(s)

No additional information available

SECTION 8: Exposure controls/personal protection

8.1. Control parameters

8.1.1 National occupational exposure and biological limit values

No additional information available

8.1.2. Recommended monitoring procedures

No additional information available

8.1.3. Air contaminants formed

No additional information available

8.1.4. DNEL and PNEC

No additional information available

8.1.5. Control banding

No additional information available

8.2. Exposure controls

8.2.1. Appropriate engineering controls

Appropriate engineering controls:

Ensure good ventilation of the work station.

8.2.2. Personal protection equipment

Personal protective equipment:

Wear recommended personal protective equipment.

Personal protective equipment symbol(s):



8.2.2.1. Eye and face protection

Eye protection:

Chemical goggles or safety glasses

1-NAPHTHYLAMINE EXTRA PURE

Safety Data Sheet

according to the REACH Regulation (EC) 1907/2006 amended by Regulation (EU) 2020/878

8.2.2.2. Skin protection

Skin and body protection:

Wear a mask

Hand protection:

Protective gloves

8.2.2.3. Respiratory protection

Respiratory protection:

Wear appropriate mask

8.2.2.4. Thermal hazards

No additional information available

8.2.3. Environmental exposure controls

Environmental exposure controls:

Avoid release to the environment.

SECTION 9: Physical and chemical properties

9.1. Information on basic physical and chemical properties

Physical state	: Solid
Colour	: Brownish purple.
Appearance	: Crystalline powder.
Molecular mass	: 143.19 g/mol
Odour	: ammonia like odour.
Odour threshold	: Not available
Melting point	: 47 – 50 °C
Freezing point	: Not applicable
Boiling point	: 301 °C
Flammability	: Non flammable.
Lower explosion limit	: Not applicable
Upper explosion limit	: Not applicable
Flash point	: 157 °C
Auto-ignition temperature	: 460 °C
Decomposition temperature	: Not available
pH	: 7.1 - 1 g/l at 20 °C
pH solution	: Not available
Viscosity, kinematic	: Not applicable
Solubility	: Water: 0.002 % at 20°C - Very slightly soluble
Partition coefficient n-octanol/water (Log Kow)	: Not available
Partition coefficient n-octanol/water (Log Pow)	: 2.1
Vapour pressure	: 1 mm Hg at 104 °C
Vapour pressure at 50°C	: Not available
Density	: 1.114 g/cm ³ at 25 °C
Relative density	: Not available
Relative vapour density at 20°C	: 4.93 (Air= 1)
Particle size	: Not available

9.2. Other information

9.2.1. Information with regard to physical hazard classes

No additional information available

9.2.2. Other safety characteristics

No additional information available

1-NAPHTHYLAMINE EXTRA PURE

Safety Data Sheet

according to the REACH Regulation (EC) 1907/2006 amended by Regulation (EU) 2020/878

SECTION 10: Stability and reactivity

10.1. Reactivity

The product is non-reactive under normal conditions of use, storage and transport.

10.2. Chemical stability

Stable under normal conditions.

10.3. Possibility of hazardous reactions

No dangerous reactions known under normal conditions of use.

10.4. Conditions to avoid

Direct sunlight. Air contact. Moisture.

10.5. Incompatible materials

No additional information available

10.6. Hazardous decomposition products

Under normal conditions of storage and use, hazardous decomposition products should not be produced.

SECTION 11: Toxicological information

11.1. Information on hazard classes as defined in Regulation (EC) No 1272/2008

Acute toxicity (oral)	: Harmful if swallowed.
Acute toxicity (dermal)	: Not classified
Acute toxicity (inhalation)	: Not classified
Skin corrosion/irritation	: Not classified pH: 7.1 - 1 g/l at 20 °C
Serious eye damage/irritation	: Not classified pH: 7.1 - 1 g/l at 20 °C
Respiratory or skin sensitisation	: Not classified
Germ cell mutagenicity	: Not classified
Carcinogenicity	: May cause cancer.
Reproductive toxicity	: Not classified
STOT-single exposure	: Not classified
STOT-repeated exposure	: Not classified
Aspiration hazard	: Not classified

1-NAPHTHYLAMINE EXTRA PURE (134-32-7)

Viscosity, kinematic	Not applicable
----------------------	----------------

11.2. Information on other hazards

11.2.1. Endocrine disrupting properties

No additional information available

11.2.2. Other information

Potential adverse human health effects and symptoms : Harmful if swallowed.

SECTION 12: Ecological information

12.1. Toxicity

Ecology - general	: Toxic to aquatic life with long lasting effects.
Ecology - water	: Toxic to aquatic life with long lasting effects.

1-NAPHTHYLAMINE EXTRA PURE

Safety Data Sheet

according to the REACH Regulation (EC) 1907/2006 amended by Regulation (EU) 2020/878

Hazardous to the aquatic environment, short-term (acute) : Not classified

Hazardous to the aquatic environment, long-term (chronic) : Toxic to aquatic life with long lasting effects.

12.2. Persistence and degradability

1-NAPHTHYLAMINE EXTRA PURE (134-32-7)

Persistence and degradability	Rapidly degradable
-------------------------------	--------------------

12.3. Bioaccumulative potential

No additional information available

12.4. Mobility in soil

No additional information available

12.5. Results of PBT and vPvB assessment

No additional information available

12.6. Endocrine disrupting properties

No additional information available

12.7. Other adverse effects

No additional information available

SECTION 13: Disposal considerations

13.1. Waste treatment methods

Regional waste regulation	: Disposal must be done according to official regulations.
Waste treatment methods	: Dispose of contents/container in accordance with licensed collector's sorting instructions.
Sewage disposal recommendations	: Disposal must be done according to official regulations.
Product/Packaging disposal recommendations	: Dispose of contents/container to hazardous or special waste collection point, in accordance with local, regional, national and/or international regulation. Disposal must be done according to official regulations.
Additional information	: Do not re-use empty containers.

SECTION 14: Transport information

In accordance with ADR / IMDG / IATA / ADN / RID

14.1. UN number or ID number

UN-No. (ADR)	: UN 2077
UN-No. (IMDG)	: UN 2077
UN-No. (IATA)	: UN 2077
UN-No. (ADN)	: UN 2077
UN-No. (RID)	: UN 2077

14.2. UN proper shipping name

Proper Shipping Name (ADR)	: alpha-NAPHTHYLAMINE
Proper Shipping Name (IMDG)	: alpha-NAPHTHYLAMINE
Proper Shipping Name (IATA)	: alpha-Naphthylamine
Proper Shipping Name (ADN)	: ALPHA-NAPHTHYLAMINE
Proper Shipping Name (RID)	: alpha-NAPHTHYLAMINE
Transport document description (ADR)	: UN 2077 alpha-NAPHTHYLAMINE, 6.1, III, (E)
Transport document description (IMDG)	: UN 2077 alpha-NAPHTHYLAMINE, 6.1, III, MARINE POLLUTANT/ENVIRONMENTALLY HAZARDOUS

1-NAPHTHYLAMINE EXTRA PURE

Safety Data Sheet

according to the REACH Regulation (EC) 1907/2006 amended by Regulation (EU) 2020/878

Transport document description (IATA) : UN 2077 alpha-Naphthylamine, 6.1, III, ENVIRONMENTALLY HAZARDOUS
Transport document description (ADN) : UN 2077 ALPHA-NAPHTHYLAMINE, 6.1, III, ENVIRONMENTALLY HAZARDOUS
Transport document description (RID) : UN 2077 alpha-NAPHTHYLAMINE, 6.1, III, ENVIRONMENTALLY HAZARDOUS

14.3. Transport hazard class(es)

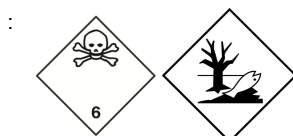
ADR

Transport hazard class(es) (ADR) : 6.1
Danger labels (ADR) : 6.1



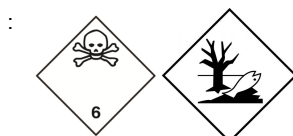
IMDG

Transport hazard class(es) (IMDG) : 6.1
Danger labels (IMDG) : 6.1



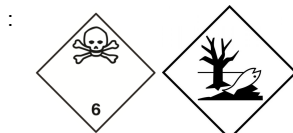
IATA

Transport hazard class(es) (IATA) : 6.1
Danger labels (IATA) : 6.1



ADN

Transport hazard class(es) (ADN) : 6.1
Danger labels (ADN) : 6.1



RID

Transport hazard class(es) (RID) : 6.1
Danger labels (RID) : 6.1



14.4. Packing group

Packing group (ADR) : III
Packing group (IMDG) : III
Packing group (IATA) : III
Packing group (ADN) : III
Packing group (RID) : III

14.5. Environmental hazards

Dangerous for the environment : Yes
Marine pollutant : Yes
Other information : No supplementary information available


1-NAPHTHYLAMINE EXTRA PURE

Safety Data Sheet

according to the REACH Regulation (EC) 1907/2006 amended by Regulation (EU) 2020/878

14.6. Special precautions for user

Overland transport

Classification code (ADR)	: T2
Limited quantities (ADR)	: 5kg
Excepted quantities (ADR)	: E1
Packing instructions (ADR)	: P002, IBC08, LP02, R001
Special packing provisions (ADR)	: B3
Mixed packing provisions (ADR)	: MP10
Portable tank and bulk container instructions (ADR)	: T1
Portable tank and bulk container special provisions (ADR)	: TP33
Tank code (ADR)	: SGAH, L4BH
Tank special provisions (ADR)	: TU15, TE19
Vehicle for tank carriage	: AT
Transport category (ADR)	: 2
Special provisions for carriage - Bulk (ADR)	: VC1, VC2, AP7
Special provisions for carriage - Loading, unloading and handling (ADR)	: CV13, CV28
Special provisions for carriage - Operation (ADR)	: S9
Hazard identification number (Kemler No.)	: 60
Orange plates	: 

Tunnel restriction code (ADR)	: E
EAC code	: 2Z

Transport by sea

Limited quantities (IMDG)	: 5 kg
Excepted quantities (IMDG)	: E1
Packing instructions (IMDG)	: P002, LP02
IBC packing instructions (IMDG)	: IBC08
IBC special provisions (IMDG)	: B3
Tank instructions (IMDG)	: T1
Tank special provisions (IMDG)	: TP33
EmS-No. (Fire)	: F-A
EmS-No. (Spillage)	: S-A
Stowage category (IMDG)	: A
Properties and observations (IMDG)	: White crystals. Toxic if swallowed, by skin contact or by inhalation.
MFAG-No	: 153

Air transport

PCA Excepted quantities (IATA)	: E1
PCA Limited quantities (IATA)	: Y645
PCA limited quantity max net quantity (IATA)	: 10kg
PCA packing instructions (IATA)	: 670
PCA max net quantity (IATA)	: 100kg
CAO packing instructions (IATA)	: 677
CAO max net quantity (IATA)	: 200kg
ERG code (IATA)	: 6L

Inland waterway transport

Classification code (ADN)	: T2
Special provisions (ADN)	: 802
Limited quantities (ADN)	: 5 kg
Excepted quantities (ADN)	: E1
Equipment required (ADN)	: PP, EP
Number of blue cones/lights (ADN)	: 0

Rail transport

Classification code (RID)	: T2
---------------------------	------

1-NAPHTHYLAMINE EXTRA PURE

Safety Data Sheet

according to the REACH Regulation (EC) 1907/2006 amended by Regulation (EU) 2020/878

Limited quantities (RID)	: 5kg
Excepted quantities (RID)	: E1
Packing instructions (RID)	: P002, IBC08, LP02, R001
Special packing provisions (RID)	: B3
Mixed packing provisions (RID)	: MP10
Portable tank and bulk container instructions (RID)	: T1
Portable tank and bulk container special provisions (RID)	: TP33
Tank codes for RID tanks (RID)	: SGAH, L4BH
Special provisions for RID tanks (RID)	: TU15
Transport category (RID)	: 2
Special provisions for carriage – Bulk (RID)	: VC1, VC2, AP7
Special provisions for carriage - Loading, unloading and handling (RID)	: CW13, CW28, CW31
Colis express (express parcels) (RID)	: CE11
Hazard identification number (RID)	: 60

14.7. Maritime transport in bulk according to IMO instruments

Not applicable

SECTION 15: Regulatory information

15.1. Safety, health and environmental regulations/legislation specific for the substance or mixture

15.1.1. EU-Regulations

REACH Annex XVII (Restriction List)

Not listed on REACH Annex XVII

REACH Annex XIV (Authorisation List)

Not listed on REACH Annex XIV (Authorisation List)

REACH Candidate List (SVHC)

Not listed on the REACH Candidate List

PIC Regulation (Prior Informed Consent)

Not listed on the PIC list (Regulation EU 649/2012)

POP Regulation (Persistent Organic Pollutants)

Not listed on the POP list (Regulation EU 2019/1021)

Ozone Regulation (1005/2009)

Not listed on the Ozone Depletion list (Regulation EU 1005/2009)

Dual-Use Regulation (428/2009)

Contains no substance subject to the COUNCIL REGULATION (EC) No 428/2009 of 5 May 2009 setting up a Community regime for the control of exports, transfer, brokering and transit of dual-use items.

Explosives Precursors Regulation (2019/1148)

Contains no substance(s) listed on the Explosives Precursors list (Regulation EU 2019/1148 on the marketing and use of explosives precursors)

Drug Precursors Regulation (273/2004)

Contains no substance(s) listed on the Drug Precursors list (Regulation EC 273/2004 on the manufacture and the placing on market of certain substances used in the illicit manufacture of narcotic drugs and psychotropic substances)

15.1.2. National regulations

France

Occupational diseases	
Code	Description
RG 15	Diseases caused by aromatic amines, their salts and derivatives, especially hydroxylated, halogenated, nitrated, nitrosated and sulphonated

1-NAPHTHYLAMINE EXTRA PURE

Safety Data Sheet

according to the REACH Regulation (EC) 1907/2006 amended by Regulation (EU) 2020/878

RG 15 BIS	Allergic mechanism disorders caused by aromatic amines, their salts, their derivatives, especially hydroxylated, halogenated, nitrated, nitrosated, sulphonated and products containing them in the free state
-----------	----------------------------------------------------------------------------------------------------------------------------------------------------------------------------------------------------------------

Germany

Water hazard class (WGK) : WGK 2, Significantly hazardous to water (Classification according to AwSV; ID No. 822).
Hazardous Incident Ordinance (12. BImSchV) : Is not subject to the Hazardous Incident Ordinance (12. BImSchV)

Netherlands

SZW-lijst van kankerverwekkende stoffen : The substance is not listed
SZW-lijst van mutagene stoffen : The substance is not listed
SZW-lijst van reprotoxische stoffen – Borstvoeding : The substance is not listed
SZW-lijst van reprotoxische stoffen – Vruchtbaarheid : The substance is not listed
SZW-lijst van reprotoxische stoffen – Ontwikkeling : The substance is not listed

Denmark

Danish National Regulations : Young people below the age of 18 years are not allowed to use the product
Pregnant/breastfeeding women working with the product must not be in direct contact with the product

15.2. Chemical safety assessment

No chemical safety assessment has been carried out

SECTION 16: Other information

Abbreviations and acronyms:	
ADN	European Agreement concerning the International Carriage of Dangerous Goods by Inland Waterways
ADR	European Agreement concerning the International Carriage of Dangerous Goods by Road
ATE	Acute Toxicity Estimate
BCF	Bioconcentration factor
BLV	Biological limit value
BOD	Biochemical oxygen demand (BOD)
COD	Chemical oxygen demand (COD)
DMEL	Derived Minimal Effect level
DNEL	Derived-No Effect Level
EC-No.	European Community number
EC50	Median effective concentration
EN	European Standard
IARC	International Agency for Research on Cancer
IATA	International Air Transport Association
IMDG	International Maritime Dangerous Goods
LC50	Median lethal concentration
LD50	Median lethal dose
LOAEL	Lowest Observed Adverse Effect Level
NOAEC	No-Observed Adverse Effect Concentration
NOAEL	No-Observed Adverse Effect Level
NOEC	No-Observed Effect Concentration
OECD	Organisation for Economic Co-operation and Development

1-NAPHTHYLAMINE EXTRA PURE

Safety Data Sheet

according to the REACH Regulation (EC) 1907/2006 amended by Regulation (EU) 2020/878

Abbreviations and acronyms:	
OEL	Occupational Exposure Limit
PBT	Persistent Bioaccumulative Toxic
PNEC	Predicted No-Effect Concentration
RID	Regulations concerning the International Carriage of Dangerous Goods by Rail
SDS	Safety Data Sheet
STP	Sewage treatment plant
ThOD	Theoretical oxygen demand (ThOD)
TLM	Median Tolerance Limit
VOC	Volatile Organic Compounds
CAS-No.	Chemical Abstract Service number
N.O.S.	Not Otherwise Specified
vPvB	Very Persistent and Very Bioaccumulative
ED	Endocrine disrupting properties

Full text of H- and EUH-statements:	
Acute Tox. 4 (Oral)	Acute toxicity (oral), Category 4
Aquatic Chronic 2	Hazardous to the aquatic environment – Chronic Hazard, Category 2
Carc. 1A	Carcinogenicity, Category 1A
H302	Harmful if swallowed.
H350	May cause cancer.
H411	Toxic to aquatic life with long lasting effects.

Safety Data Sheet (SDS), EU

This information is based on our current knowledge and is intended to describe the product for the purposes of health, safety and environmental requirements only. It should not therefore be construed as guaranteeing any specific property of the product.