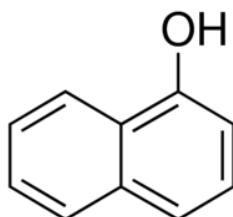


SECTION 1: Identification of the substance/mixture and of the company/undertaking

1.1. Product identifier

Product form	: Substance
Trade name	: 1-NAPHTHOL EXTRA PURE
IUPAC name	: Naphthalen-1-ol
EC Index-No.	: 604-029-00-5
EC-No.	: 201-969-4
CAS-No.	: 90-15-3
Product code	: 04755
Formula	: C ₁₀ H ₈ O
Chemical structure	:



Synonyms	: 1-Hydroxynaphthalene, α -Naphthol , 1-Naphthalenol
----------	--

1.2. Relevant identified uses of the substance or mixture and uses advised against

1.2.1. Relevant identified uses

Use of the substance/mixture	: Laboratory chemicals, Manufacture of substances
------------------------------	---

1.2.2. Uses advised against

No additional information available

1.3. Details of the supplier of the safety data sheet

LOBA CHEMIE PVT.LTD.
107 Wode House Road, Jehangir Villa, Colaba
400005 Mumbai
INDIA
T +91 22 6663 6663 - F +91 22 6663 6699
info@lobachemie.com - www.lobachemie.com

1.4. Emergency telephone number

Emergency number	: + 91 22 6663 6663 (9:00am - 6:00 pm)
------------------	--

SECTION 2: Hazards identification

2.1. Classification of the substance or mixture

Classification according to Regulation (EC) No. 1272/2008 [CLP]

Acute toxicity (oral), Category 4	H302
Acute toxicity (dermal), Category 4	H312
Skin corrosion/irritation, Category 2	H315
Serious eye damage/eye irritation, Category 1	H318
Specific target organ toxicity – Single exposure, Category 3,	H335
Respiratory tract irritation	

Full text of H- and EUH-statements: see section 16

Adverse physicochemical, human health and environmental effects

Harmful in contact with skin. Harmful if swallowed. May cause respiratory irritation. Causes skin irritation. Causes serious eye damage.

1-NAPHTHOL EXTRA PURE

Safety Data Sheet

according to the REACH Regulation (EC) 1907/2006 amended by Regulation (EU) 2020/878

2.2. Label elements

Labelling according to Regulation (EC) No. 1272/2008 [CLP]

Hazard pictograms (CLP) :



GHS05

GHS07

Signal word (CLP) :

Danger

Hazard statements (CLP) :

H302+H312 - Harmful if swallowed or in contact with skin.
H315 - Causes skin irritation.
H318 - Causes serious eye damage.
H335 - May cause respiratory irritation.

Precautionary statements (CLP) :

P261 - Avoid breathing dust, fume, gas, mist, spray, vapours.
P302+P352 - IF ON SKIN: Wash with plenty of water.
P304+P340 - IF INHALED: Remove person to fresh air and keep comfortable for breathing.
P305+P351+P338 - IF IN EYES: Rinse cautiously with water for several minutes. Remove contact lenses, if present and easy to do. Continue rinsing.
P280 - Wear protective clothing, eye protection, face protection, protective gloves.

2.3. Other hazards

No additional information available

SECTION 3: Composition/information on ingredients

3.1. Substances

Substance type : Mono-constituent

Name	Product identifier	%
1-NAPHTHOL	CAS-No.: 90-15-3 EC-No.: 201-969-4 EC Index-No.: 604-029-00-5	100

3.2. Mixtures

Not applicable

SECTION 4: First aid measures

4.1. Description of first aid measures

First-aid measures general	: Call a poison center or a doctor if you feel unwell.
First-aid measures after inhalation	: Remove person to fresh air and keep comfortable for breathing. Remove person to fresh air and keep comfortable for breathing. Call a POISON CENTER/doctor if you feel unwell. Call a poison center or a doctor if you feel unwell.
First-aid measures after skin contact	: Immediately call a POISON CENTER/doctor. Specific measures (see supplemental first aid instruction on this label). Wash with plenty of water/.... Wash contaminated clothing before reuse. If skin irritation occurs: Get medical advice/attention. Specific treatment (see supplemental first aid instruction on this label). Wash skin with plenty of water. Take off contaminated clothing. If skin irritation occurs: Get medical advice/attention.
First-aid measures after eye contact	: Immediately call a POISON CENTER/doctor. Rinse cautiously with water for several minutes. Remove contact lenses, if present and easy to do. Continue rinsing. Call a physician immediately.
First-aid measures after ingestion	: Call a POISON CENTER/doctor if you feel unwell. Rinse mouth. Call a poison center or a doctor if you feel unwell.

4.2. Most important symptoms and effects, both acute and delayed

Symptoms/effects after inhalation : May cause respiratory irritation.

1-NAPHTHOL EXTRA PURE

Safety Data Sheet

according to the REACH Regulation (EC) 1907/2006 amended by Regulation (EU) 2020/878

Symptoms/effects after skin contact	: Repeated exposure to this material can result in absorption through skin causing significant health hazard. Harmful in contact with skin. Causes skin irritation. Irritation.
Symptoms/effects after eye contact	: Causes serious eye damage. Serious damage to eyes.
Symptoms/effects after ingestion	: Swallowing a small quantity of this material will result in serious health hazard.

4.3. Indication of any immediate medical attention and special treatment needed

Treat symptomatically.

SECTION 5: Firefighting measures

5.1. Extinguishing media

Suitable extinguishing media	: dry chemical powder, alcohol-resistant foam, carbon dioxide (CO ₂). Water spray. Dry powder. Foam.
Unsuitable extinguishing media	: Do not use a heavy water stream.

5.2. Special hazards arising from the substance or mixture

Hazardous decomposition products in case of fire	: Toxic fumes may be released.
--	--------------------------------

5.3. Advice for firefighters

Protection during firefighting	: Do not attempt to take action without suitable protective equipment. Self-contained breathing apparatus. Complete protective clothing.
--------------------------------	--

SECTION 6: Accidental release measures

6.1. Personal precautions, protective equipment and emergency procedures

6.1.1. For non-emergency personnel

Emergency procedures	: Ventilate spillage area. Evacuate unnecessary personnel. Avoid contact with skin, eyes and clothing. Avoid breathing dust/fume/gas/mist/vapours/spray.
----------------------	--

6.1.2. For emergency responders

Protective equipment	: Do not attempt to take action without suitable protective equipment. Use personal protective equipment as required. For further information refer to section 8: "Exposure controls/personal protection".
Emergency procedures	: Stop release.

6.2. Environmental precautions

Avoid release to the environment.

6.3. Methods and material for containment and cleaning up

Methods for cleaning up	: Mechanically recover the product. Clear up rapidly by scoop or vacuum.
Other information	: Dispose of materials or solid residues at an authorized site.

6.4. Reference to other sections

For further information refer to section 13.

SECTION 7: Handling and storage

7.1. Precautions for safe handling

Precautions for safe handling	: Avoid breathing dust/fume/gas/mist/vapours/spray. Use only outdoors or in a well-ventilated area. Do not get in eyes, on skin, or on clothing. Wear personal protective equipment.
Hygiene measures	: Wash hands, forearms and face thoroughly after handling. Wash contaminated clothing before reuse. Do not eat, drink or smoke when using this product. Always wash hands after handling the product.

1-NAPHTHOL EXTRA PURE

Safety Data Sheet

according to the REACH Regulation (EC) 1907/2006 amended by Regulation (EU) 2020/878

7.2. Conditions for safe storage, including any incompatibilities

Storage conditions : Store in a dry place. Store in original container. Store locked up. Store in a well-ventilated place. Keep container tightly closed. Keep cool.

7.3. Specific end use(s)

No additional information available

SECTION 8: Exposure controls/personal protection

8.1. Control parameters

8.1.1 National occupational exposure and biological limit values

No additional information available

8.1.2. Recommended monitoring procedures

No additional information available

8.1.3. Air contaminants formed

No additional information available

8.1.4. DNEL and PNEC

No additional information available

8.1.5. Control banding

No additional information available

8.2. Exposure controls

8.2.1. Appropriate engineering controls

Appropriate engineering controls:

Ensure good ventilation of the work station.

8.2.2. Personal protection equipment

Personal protective equipment symbol(s):



8.2.2.1. Eye and face protection

Eye protection:

Chemical goggles or safety glasses

8.2.2.2. Skin protection

Skin and body protection:

Wear a mask

Hand protection:

Protective gloves

8.2.2.3. Respiratory protection

Respiratory protection:

Wear appropriate mask

8.2.2.4. Thermal hazards

No additional information available

8.2.3. Environmental exposure controls

Environmental exposure controls:

Avoid release to the environment.

1-NAPHTHOL EXTRA PURE

Safety Data Sheet

according to the REACH Regulation (EC) 1907/2006 amended by Regulation (EU) 2020/878

SECTION 9: Physical and chemical properties

9.1. Information on basic physical and chemical properties

Physical state	: Solid
Colour	: Off white to brownish.
Appearance	: Flakes.
Molecular mass	: 144.17 g/mol
Odour	: Slight phenolic odour.
Odour threshold	: Not available
Melting point	: 94 – 96 °C
Freezing point	: Not applicable
Boiling point	: 278 – 280 °C
Flammability	: Non flammable.
Lower explosion limit	: 0.8 vol %
Upper explosion limit	: 5 vol %
Flash point	: 125 °C
Auto-ignition temperature	: 541 °C
Decomposition temperature	: Not available
pH	: Not available
pH solution	: Not available
Viscosity, kinematic	: Not applicable
Solubility	: Water: Practically insoluble in water
Partition coefficient n-octanol/water (Log Kow)	: Not available
Partition coefficient n-octanol/water (Log Pow)	: 2.85
Vapour pressure	: 2.3 hPa at 100°C
Vapour pressure at 50°C	: Not available
Density	: 1.28 g/cm ³ at 20°C
Relative density	: Not available
Relative vapour density at 20°C	: 4.5
Particle size	: Not available

9.2. Other information

9.2.1. Information with regard to physical hazard classes

Explosion limits : 0.008 – 0.05 vol %

9.2.2. Other safety characteristics

No additional information available

SECTION 10: Stability and reactivity

10.1. Reactivity

The product is non-reactive under normal conditions of use, storage and transport.

10.2. Chemical stability

Stable under normal conditions.

10.3. Possibility of hazardous reactions

No dangerous reactions known under normal conditions of use.

10.4. Conditions to avoid

Direct sunlight. Air contact. Moisture.

10.5. Incompatible materials

No additional information available

10.6. Hazardous decomposition products

Under normal conditions of storage and use, hazardous decomposition products should not be produced.

1-NAPHTHOL EXTRA PURE

Safety Data Sheet

according to the REACH Regulation (EC) 1907/2006 amended by Regulation (EU) 2020/878

SECTION 11: Toxicological information

11.1. Information on hazard classes as defined in Regulation (EC) No 1272/2008

Acute toxicity (oral)	: Harmful if swallowed.
Acute toxicity (dermal)	: Harmful in contact with skin.
Acute toxicity (inhalation)	: Not classified
Skin corrosion/irritation	: Causes skin irritation.
Serious eye damage/irritation	: Causes serious eye damage.
Respiratory or skin sensitisation	: Not classified
Germ cell mutagenicity	: Not classified
Carcinogenicity	: Not classified
Reproductive toxicity	: Not classified
STOT-single exposure	: May cause respiratory irritation.
STOT-repeated exposure	: Not classified
Aspiration hazard	: Not classified

1-NAPHTHOL EXTRA PURE (90-15-3)

Viscosity, kinematic	Not applicable
----------------------	----------------

11.2. Information on other hazards

11.2.1. Endocrine disrupting properties

No additional information available

11.2.2. Other information

Potential adverse human health effects and symptoms : Harmful if swallowed, Harmful in contact with skin.

SECTION 12: Ecological information

12.1. Toxicity

Ecology - general	: The product is not considered harmful to aquatic organisms nor to cause long-term adverse effects in the environment.
Hazardous to the aquatic environment, short-term (acute)	: Not classified
Hazardous to the aquatic environment, long-term (chronic)	: Not classified

12.2. Persistence and degradability

No additional information available

12.3. Bioaccumulative potential

1-NAPHTHOL EXTRA PURE (90-15-3)

Partition coefficient n-octanol/water (Log Pow)	2.85
---	------

12.4. Mobility in soil

No additional information available

12.5. Results of PBT and vPvB assessment

No additional information available

12.6. Endocrine disrupting properties

No additional information available

1-NAPHTHOL EXTRA PURE

Safety Data Sheet

according to the REACH Regulation (EC) 1907/2006 amended by Regulation (EU) 2020/878

12.7. Other adverse effects

No additional information available

SECTION 13: Disposal considerations

13.1. Waste treatment methods

Waste treatment methods : Dispose of contents/container in accordance with licensed collector's sorting instructions.
Product/Packaging disposal recommendations : Dispose of contents/container to hazardous or special waste collection point, in accordance with local, regional, national and/or international regulation.

SECTION 14: Transport information

In accordance with ADR / IMDG / IATA / ADN / RID

14.1. UN number or ID number

UN-No. (ADR) : UN 2811
UN-No. (IMDG) : UN 2811
UN-No. (IATA) : UN 2811
UN-No. (ADN) : UN 2811
UN-No. (RID) : UN 2811

14.2. UN proper shipping name

Proper Shipping Name (ADR) : TOXIC SOLID, ORGANIC, N.O.S.
Proper Shipping Name (IMDG) : TOXIC SOLID, ORGANIC, N.O.S.
Proper Shipping Name (IATA) : Toxic solid, organic, n.o.s.
Proper Shipping Name (ADN) : TOXIC SOLID, ORGANIC, N.O.S.
Proper Shipping Name (RID) : TOXIC SOLID, ORGANIC, N.O.S.
Transport document description (ADR) : UN 2811 TOXIC SOLID, ORGANIC, N.O.S. (1-NAPHTHOL), 6.1, III, (E)
Transport document description (IMDG) : UN 2811 TOXIC SOLID, ORGANIC, N.O.S. (1-NAPHTHOL), 6.1, III
Transport document description (IATA) : UN 2811 Toxic solid, organic, n.o.s. (1-NAPHTHOL), 6.1, III
Transport document description (ADN) : UN 2811 TOXIC SOLID, ORGANIC, N.O.S., 6.1, III
Transport document description (RID) : UN 2811 TOXIC SOLID, ORGANIC, N.O.S., 6.1, III

14.3. Transport hazard class(es)

ADR

Transport hazard class(es) (ADR) : 6.1
Danger labels (ADR) : 6.1



IMDG

Transport hazard class(es) (IMDG) : 6.1
Danger labels (IMDG) : 6.1



IATA

Transport hazard class(es) (IATA) : 6.1
Danger labels (IATA) : 6.1

1-NAPHTHOL EXTRA PURE

Safety Data Sheet

according to the REACH Regulation (EC) 1907/2006 amended by Regulation (EU) 2020/878



ADN

Transport hazard class(es) (ADN) : 6.1
Danger labels (ADN) : 6.1



RID

Transport hazard class(es) (RID) : 6.1
Danger labels (RID) : 6.1



14.4. Packing group

Packing group (ADR) : III
Packing group (IMDG) : III
Packing group (IATA) : III
Packing group (ADN) : III
Packing group (RID) : III

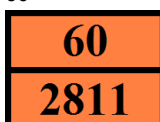
14.5. Environmental hazards

Dangerous for the environment : No
Marine pollutant : No
Other information : No supplementary information available

14.6. Special precautions for user

Overland transport

Classification code (ADR) : T2
Special provisions (ADR) : 274, 614
Limited quantities (ADR) : 5kg
Excepted quantities (ADR) : E1
Packing instructions (ADR) : P002, IBC08, LP02, R001
Special packing provisions (ADR) : B3
Mixed packing provisions (ADR) : MP10
Portable tank and bulk container instructions (ADR) : T1
Portable tank and bulk container special provisions (ADR) : TP33
Tank code (ADR) : SGAH, L4BH
Tank special provisions (ADR) : TU15, TE19
Vehicle for tank carriage : AT
Transport category (ADR) : 2
Special provisions for carriage - Bulk (ADR) : VC1, VC2, AP7
Special provisions for carriage - Loading, unloading and handling (ADR) : CV13, CV28
Special provisions for carriage - Operation (ADR) : S9
Hazard identification number (Kemler No.) : 60
Orange plates :



Tunnel restriction code (ADR) : E

1-NAPHTHOL EXTRA PURE

Safety Data Sheet

according to the REACH Regulation (EC) 1907/2006 amended by Regulation (EU) 2020/878

EAC code : 2X

Transport by sea

Special provisions (IMDG) : 223, 274
Limited quantities (IMDG) : 5 kg
Excepted quantities (IMDG) : E1
Packing instructions (IMDG) : P002
IBC packing instructions (IMDG) : IBC08
IBC special provisions (IMDG) : B3
Tank instructions (IMDG) : T1
Tank special provisions (IMDG) : TP33
EmS-No. (Fire) : F-A
EmS-No. (Spillage) : S-A
Stowage category (IMDG) : A
Properties and observations (IMDG) : Toxic if swallowed, by skin contact or by inhalation.
MFAG-No : 154

Air transport

PCA Excepted quantities (IATA) : E1
PCA Limited quantities (IATA) : Y645
PCA limited quantity max net quantity (IATA) : 10kg
PCA packing instructions (IATA) : 670
PCA max net quantity (IATA) : 100kg
CAO packing instructions (IATA) : 677
CAO max net quantity (IATA) : 200kg
Special provisions (IATA) : A3, A5
ERG code (IATA) : 6L

Inland waterway transport

Classification code (ADN) : T2
Special provisions (ADN) : 274, 614, 802
Limited quantities (ADN) : 5 kg
Excepted quantities (ADN) : E1
Carriage permitted (ADN) : T
Equipment required (ADN) : PP, EP
Number of blue cones/lights (ADN) : 0

Rail transport

Classification code (RID) : T2
Special provisions (RID) : 274, 614
Limited quantities (RID) : 5kg
Excepted quantities (RID) : E1
Packing instructions (RID) : P002, IBC08, LP02, R001
Special packing provisions (RID) : B3
Mixed packing provisions (RID) : MP10
Portable tank and bulk container instructions (RID) : T1
Portable tank and bulk container special provisions (RID) : TP33
Tank codes for RID tanks (RID) : SGAH, L4BH
Special provisions for RID tanks (RID) : TU15
Transport category (RID) : 2
Special provisions for carriage – Bulk (RID) : VC1, VC2, AP7
Special provisions for carriage - Loading, unloading and handling (RID) : CW13, CW28, CW31
Colis express (express parcels) (RID) : CE11
Hazard identification number (RID) : 60

14.7. Maritime transport in bulk according to IMO instruments

Not applicable

1-NAPHTHOL EXTRA PURE

Safety Data Sheet

according to the REACH Regulation (EC) 1907/2006 amended by Regulation (EU) 2020/878

SECTION 15: Regulatory information

15.1. Safety, health and environmental regulations/legislation specific for the substance or mixture

15.1.1. EU-Regulations

REACH Annex XVII (Restriction List)

Not listed on REACH Annex XVII

REACH Annex XIV (Authorisation List)

Not listed on REACH Annex XIV (Authorisation List)

REACH Candidate List (SVHC)

Not listed on the REACH Candidate List

PIC Regulation (Prior Informed Consent)

Not listed on the PIC list (Regulation EU 649/2012)

POP Regulation (Persistent Organic Pollutants)

Not listed on the POP list (Regulation EU 2019/1021)

Ozone Regulation (1005/2009)

Not listed on the Ozone Depletion list (Regulation EU 1005/2009)

Explosives Precursors Regulation (2019/1148)

Contains no substance(s) listed on the Explosives Precursors list (Regulation EU 2019/1148 on the marketing and use of explosives precursors)

Drug Precursors Regulation (273/2004)

Contains no substance(s) listed on the Drug Precursors list (Regulation EC 273/2004 on the manufacture and the placing on market of certain substances used in the illicit manufacture of narcotic drugs and psychotropic substances)

15.1.2. National regulations

Germany

Water hazard class (WGK) : WGK 1, Slightly hazardous to water (Classification according to AwSV; ID No. 2944).
Hazardous Incident Ordinance (12. BImSchV) : Is not subject of the Hazardous Incident Ordinance (12. BImSchV)

Netherlands

SZW-lijst van kankerverwekkende stoffen : The substance is not listed
SZW-lijst van mutagene stoffen : The substance is not listed
SZW-lijst van reprotoxische stoffen – Borstvoeding : The substance is not listed
SZW-lijst van reprotoxische stoffen – Vruchtbaarheid : The substance is not listed
SZW-lijst van reprotoxische stoffen – Ontwikkeling : The substance is not listed

Denmark

Danish National Regulations : Young people below the age of 18 years are not allowed to use the product
Pregnant/breastfeeding women working with the product must not be in direct contact with the product

15.2. Chemical safety assessment

No chemical safety assessment has been carried out

SECTION 16: Other information

Abbreviations and acronyms:

ADN	European Agreement concerning the International Carriage of Dangerous Goods by Inland Waterways
ADR	European Agreement concerning the International Carriage of Dangerous Goods by Road
ATE	Acute Toxicity Estimate
BCF	Bioconcentration factor

1-NAPHTHOL EXTRA PURE

Safety Data Sheet

according to the REACH Regulation (EC) 1907/2006 amended by Regulation (EU) 2020/878

Abbreviations and acronyms:	
BLV	Biological limit value
BOD	Biochemical oxygen demand (BOD)
COD	Chemical oxygen demand (COD)
DMEL	Derived Minimal Effect level
DNEL	Derived-No Effect Level
EC-No.	European Community number
EC50	Median effective concentration
EN	European Standard
IARC	International Agency for Research on Cancer
IATA	International Air Transport Association
IMDG	International Maritime Dangerous Goods
LC50	Median lethal concentration
LD50	Median lethal dose
LOAEL	Lowest Observed Adverse Effect Level
NOAEC	No-Observed Adverse Effect Concentration
NOAEL	No-Observed Adverse Effect Level
NOEC	No-Observed Effect Concentration
OECD	Organisation for Economic Co-operation and Development
OEL	Occupational Exposure Limit
PBT	Persistent Bioaccumulative Toxic
PNEC	Predicted No-Effect Concentration
RID	Regulations concerning the International Carriage of Dangerous Goods by Rail
SDS	Safety Data Sheet
STP	Sewage treatment plant
ThOD	Theoretical oxygen demand (ThOD)
TLM	Median Tolerance Limit
VOC	Volatile Organic Compounds
CAS-No.	Chemical Abstract Service number
N.O.S.	Not Otherwise Specified
vPvB	Very Persistent and Very Bioaccumulative
ED	Endocrine disrupting properties

Full text of H- and EUH-statements:	
Acute Tox. 4 (Dermal)	Acute toxicity (dermal), Category 4
Acute Tox. 4 (Oral)	Acute toxicity (oral), Category 4
Eye Dam. 1	Serious eye damage/eye irritation, Category 1
H302	Harmful if swallowed.
H312	Harmful in contact with skin.
H315	Causes skin irritation.

1-NAPHTHOL EXTRA PURE

Safety Data Sheet

according to the REACH Regulation (EC) 1907/2006 amended by Regulation (EU) 2020/878

Full text of H- and EUH-statements:

H318	Causes serious eye damage.
H335	May cause respiratory irritation.
Skin Irrit. 2	Skin corrosion/irritation, Category 2
STOT SE 3	Specific target organ toxicity – Single exposure, Category 3, Respiratory tract irritation

Safety Data Sheet (SDS), EU

This information is based on our current knowledge and is intended to describe the product for the purposes of health, safety and environmental requirements only. It should not therefore be construed as guaranteeing any specific property of the product.